

**In a recent poll conducted by Information International, opinions on the possibility of war with Iraq were gauged, along with the general public's views on the motives for going to war.**

**Respondents also offered observations on the effects that a war in the region would have on Lebanon and the possibility of an attack by Israel.**

**In addition, positions and actions taken by the Arab states were reviewed with a look at the general public's reactions to those policies.**

**Finally, the probability of a backlash against American forces in the region was measured. Respondents were asked to rank the likelihood of retaliatory acts and when they think the first act would occur.**



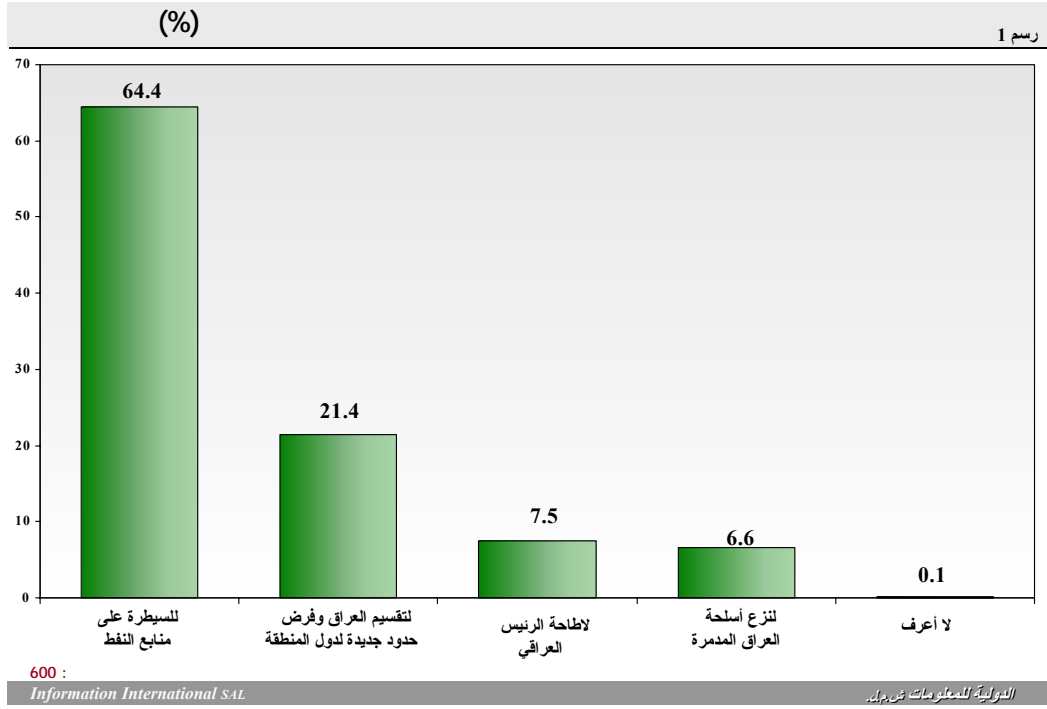


1948  
1973 1967 1948 -  
1980 .1982 1978 -  
.1991  
12  
"Information International"  
-1  
(%53.8)  
." " %21.5 %24.7  
-2  
%53.8  
." " %7 %2.2 (%90.8)  
:

	%7.3	%92.7 :	-
	%4.8	%95.2 :	-
	%3.3	%96.7 :	-
%7.7	%6.1	%86.2 :	-
%3.1	%1	%95.9 :	-
	%25	%75 :	-
			<hr/> -3

%5.7		%58
."	" %13.5	%22.8
		<hr/> -4

	(%64.4)	
%7.5		%21.4
	%6.6	
		.(1 ) " " %0.1



-5

%90.8

%34.7

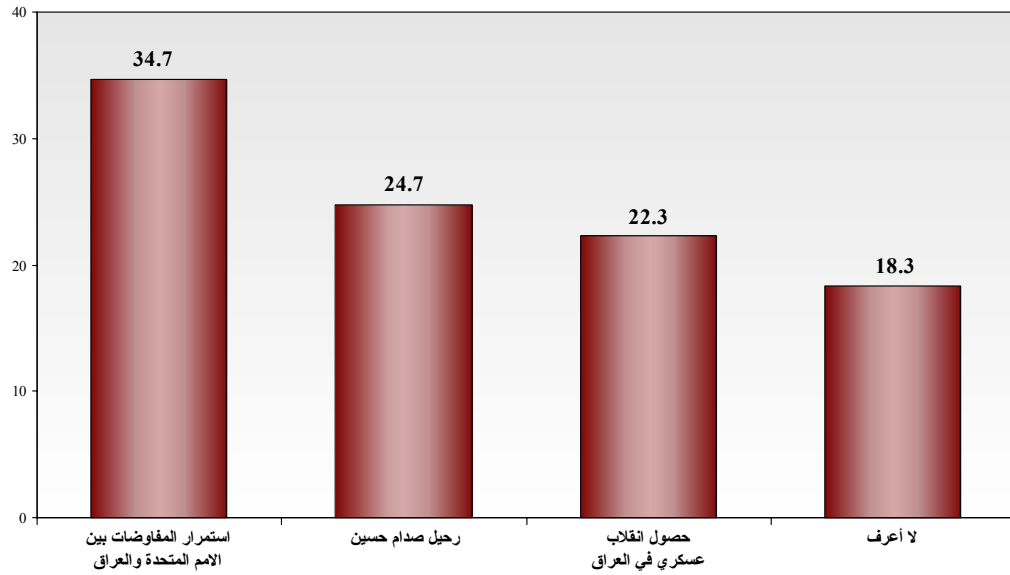
%22.3

%24.7

.(2 ) " %18.3

(%)

رسم 2

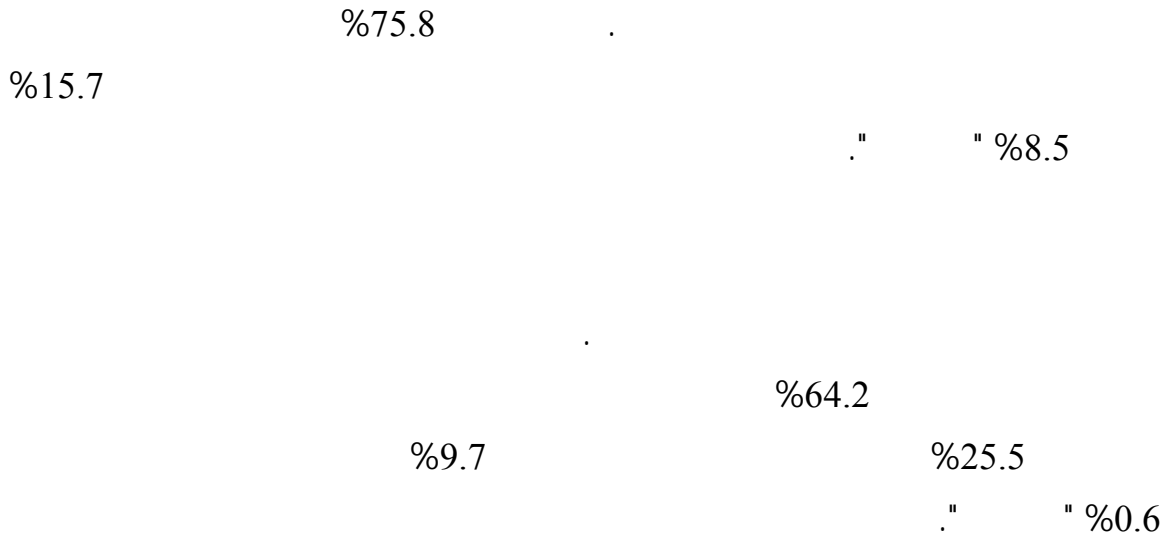


600 :

Information International SAL

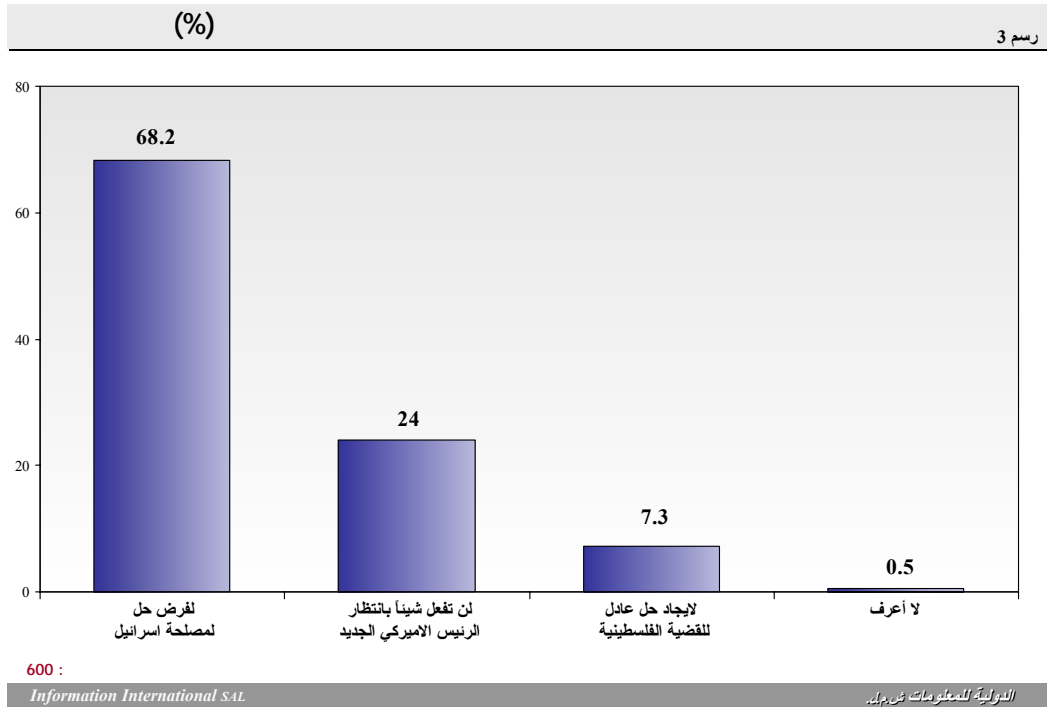
الدولية للمعلومات ش.م.ل.

-6



-7

%68.2  
%24  
%7.3  
" %0.5 " (3 ) .

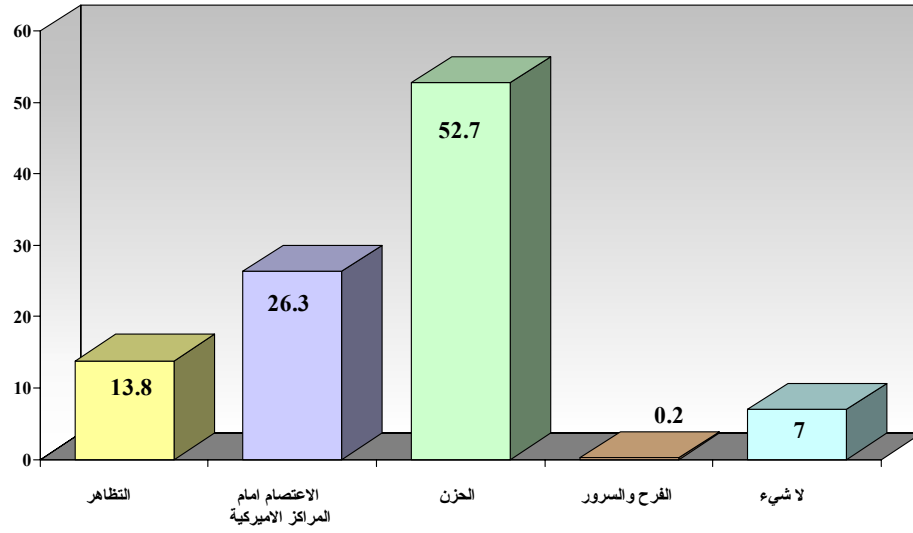


-8

%31.2  
%57.3  
" %11.5 "

(%52.7) %26.3  
%13.8  
%7 " " (4 )  
%0.2

رسم 4 (%)



600 :

Information International SAT

الدولية للمعلومات ش.م.ل.

(%53.8)

%21.5

	.%2.2		%90.8	-
%94.8				-
			%85.7	
	%58			-
			%57.3	
				-
	%64.4		%14.1	
				-
(%47)		%34.7		-
			%75.8	-
			%64.2	
-				-
			%68.2	
				-
		%40.1		-
	(%52.7)			

(2)

.	%46.2	%53.8 :				600
34-25	%35.5	24-15		%20.9 :		
	. 55	%5.2	54-45	%14.9	44-35	%23.5
1000-500			%40.3 :			
2000-1500	%10.3	1500-1000	%23.7	500-200	%19.3	
		. 2000	%4.5	200	%1.9	
				.%2 ±		