



INFORMATION  
*international* SAL

RESEARCH CONSULTANTS

### **UNESCO CRIME**

Information International conducted an opinion poll during the period of 5-10 August 2002 about the UNESCO massacre that took place on 31 July 2002. The questionnaire aimed at gauging the respondents' opinion in Greater Beirut on the reasons behind the massacre, who's responsible for it, the media's portrayal of the incident from a sectarian perspective as well as the punishment favored by the respondents for the murderer.

8 Pages



31

"Information International"

10-5

-1

%100

%20

%28.8

%37

%4.2

%1.5

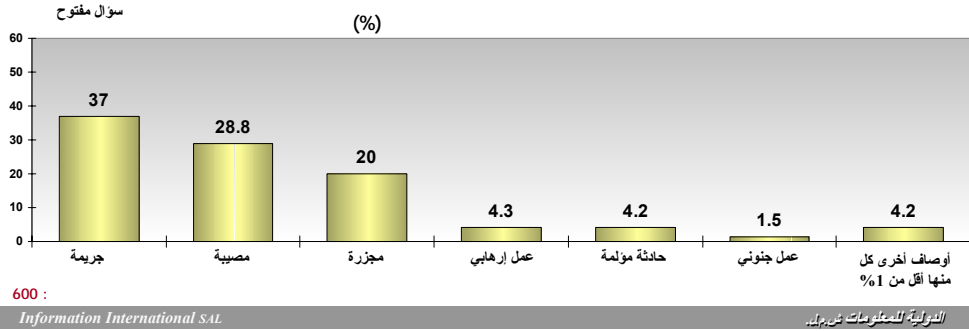
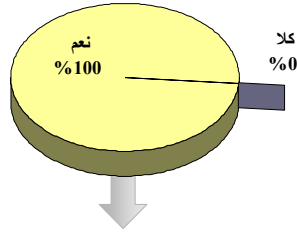
%4.2

%4.3

.(1 ) %1

(%)

رسم 1



-2

%35.8

:

%1.9 NBN %3.7 %4.7 %12.1 MTV %33 LBC %42.3  
%0.9 %1.4

:

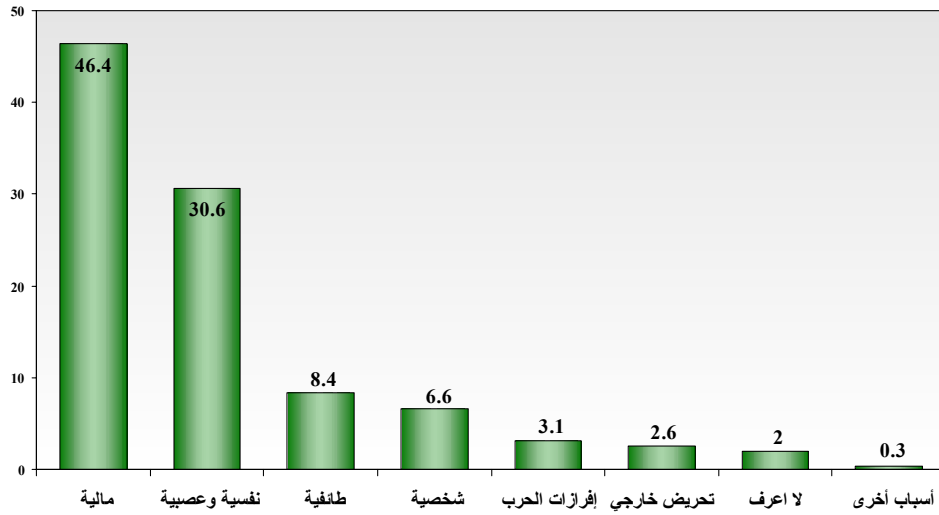
%3.8 %10 %6 %26 %28 %30  
%8.2

%23 %28.8  
%0.4

-3

" " %8.4 " " %30.6 " " %46.4  
 %0.3 %2.6 " " %3.1 " " %6.6  
 .(2 ) " " %2

(%) رسم 2



600 :

Information International SAL

الدولية للمعلومات ش.م.ل.

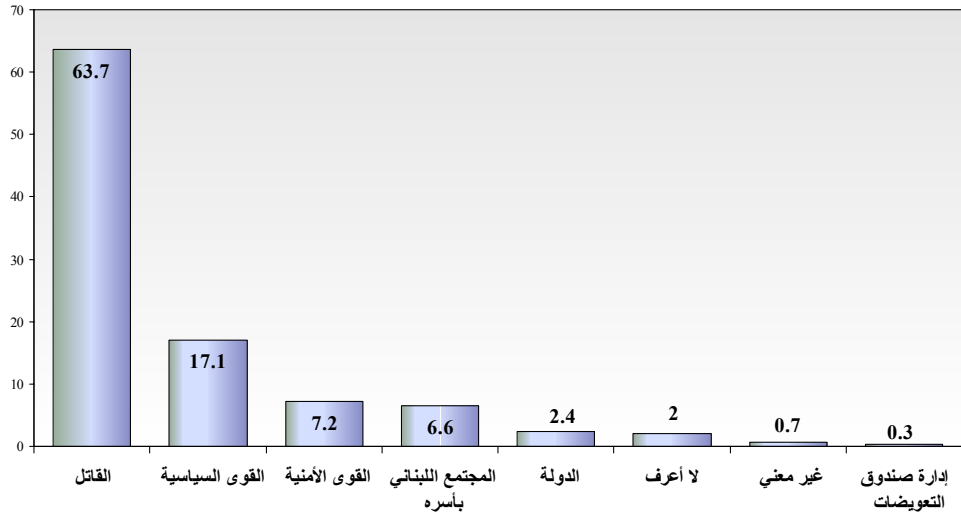
-4

%2.4 " " %0.7 " " %6.6 " " %7.2 " " %63.7  
 ) " " %2 " " %17.1  
 %0.3

.(3

(%)

رسم 3



600 :

Information International SAL

الدولية للمعلومات ش.م.ل.

-5

(%58.2)

" %15.3

%26.5

-6

%41.8

" %35.3 %21.3

" %1.6

-7

%65.7

" %0.4 " %11.1 %22.8

%22.3

:

%34

%37.3

."

" %0.6 "

" %5.8

LBC

-8

%19.8

LBC

%76.8

."

" %0.7 "

" %2.7

LBC

%39.7

."

" %2.5 "

" %19

%38.8

-9

%28.7

%59.7

."

" %0.6 "

" %11

%7.8

%53

%6.7

%32.5

-10

%8.8

%69

."

" %0.5 "

" %21.7

:

%9.1

%27.7

%57.7

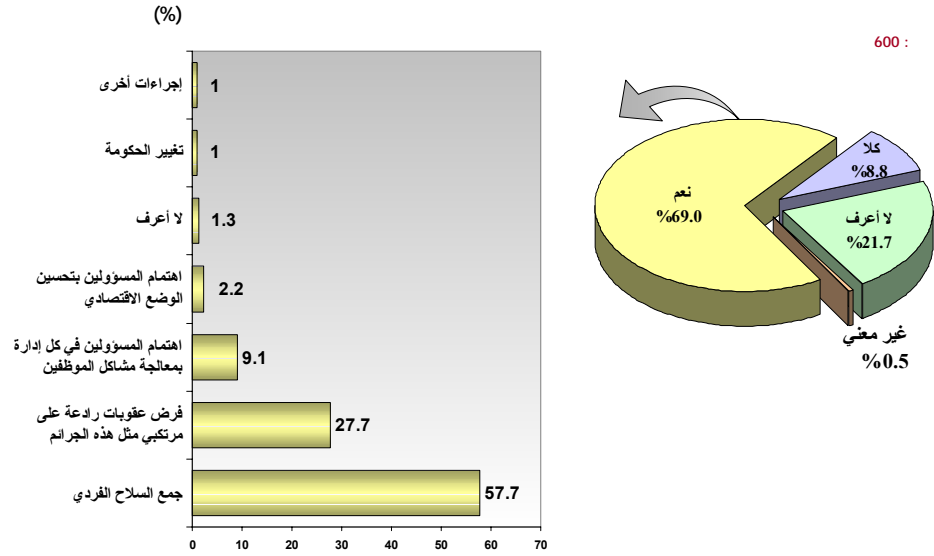
%2.2

.(4 ) "

" %1.3

%1

%1



414 :

Information International SAL

الدولية للمعلومات ش.م.ل.د.

-11

%84.5

" %3.2 " " %9.8 %2.5

-12

%10

%16.7

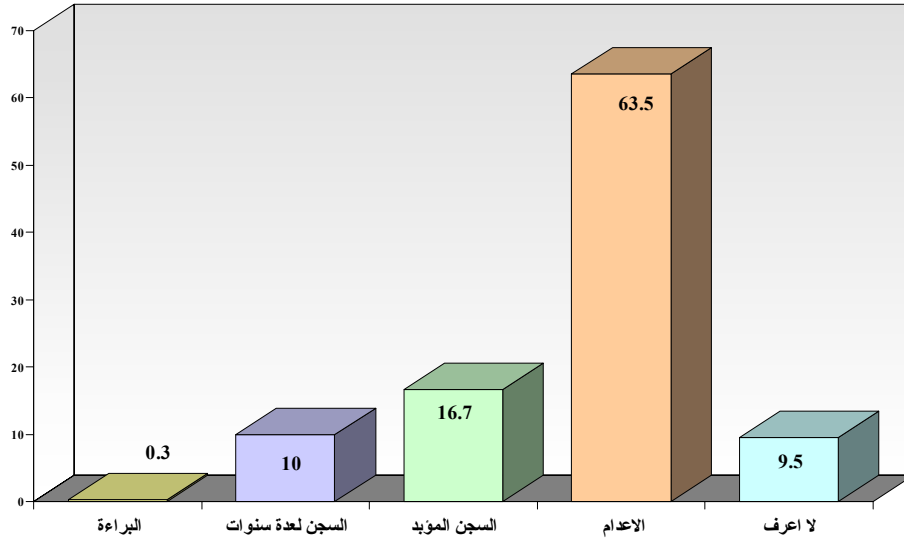
%63.5

" %9.5 " (5)

%0.3

(%)

رسم 5



600 :

Information International SAL

الدولية للمعلومات ش.م.ل.

(%51.8)

%48.2

%8.4

%65.7

%58.2

%59.7

%69

(%85.4)

LBC (%38.8)

(%39.7)

%16.7

%63.5

%67.2 :		600			
24-15	%16.1 :			%32.8	
54-45	%11.4	44-35	%32.9	34-25	%33.9
				55	%5.7
1000-500		%41.5 :			
%6.1	1500-1000	%20	500-200	%28.3	
		2000	%0.2	200	%3.9
				2000-1500	
				.%2 +	