



INFORMATION
international SAL

RESEARCH CONSULTANTS

Transportation and Fuel Survey

The survey was divided into two parts: the first part consisted of desk research regarding the cost of fuel imports and the role of the government in this sector, while the second part consisted of an opinion poll that aimed at gauging public opinion about public versus private transport, the average number of cars per family and the respective fuel consumption.

Part 2 of 2

6 Pages

.II

-1

-

%17.6

%61.5

%20.9

%18.2

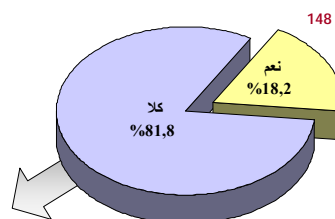
()
" %47.1 " : %52.9 "

%81.8

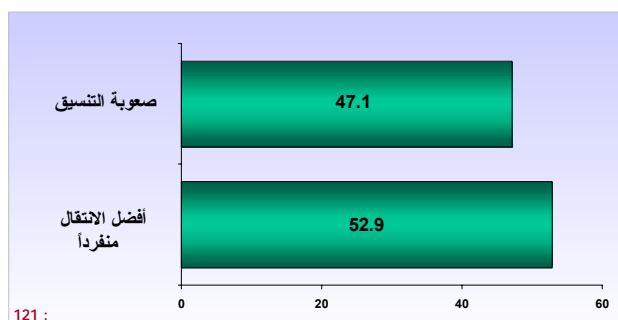
.(1) "

(%)

1



(%)



-2

%28.4

%58.1

() (2)

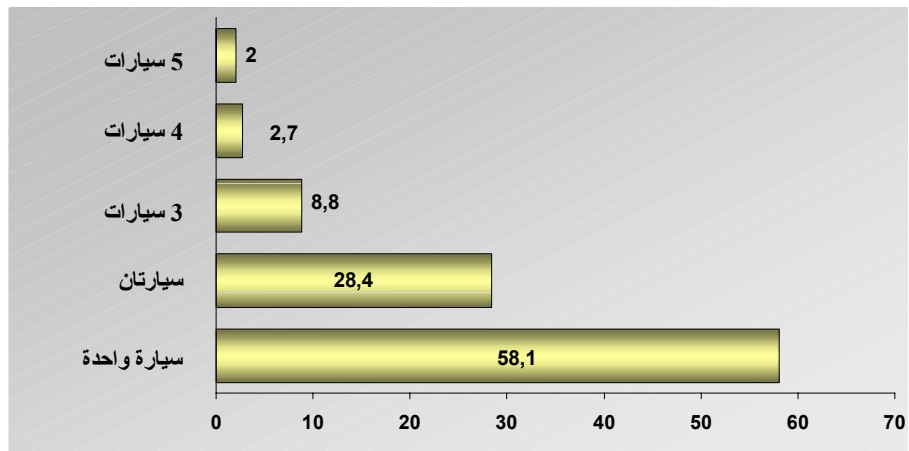
5 %2

4 %2.7

3 %8.8

(%)

2



150 :

Information International S.A.L

2

الدولة للمعلومات في ليبيا

-3

%15.5

%37.2

%47.3

(...)

%7.4

1998-1991

%48 1990-1981

%39.9 1980-1973

.2001-1999

%4.7

-4

%82.4

%14.9

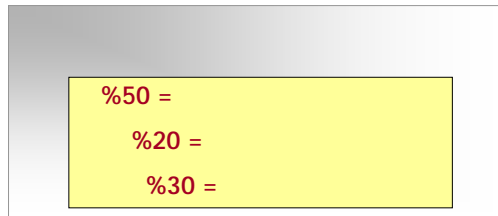
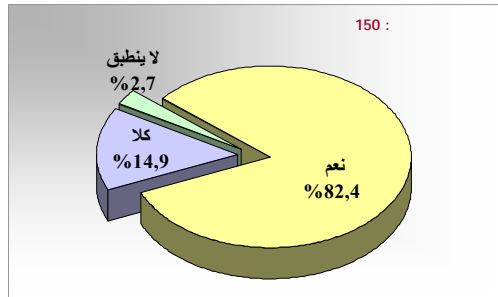
%2.7

%31.8 %9.1 %31.8 :

.(3)

(%)

3



-5

%30 %50 %20

.(3)

-6

%29.1 98 %58.1

. 92 %12.8

) 56.2

.(20/ 144

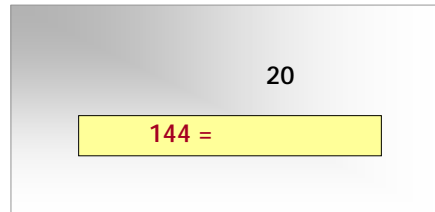
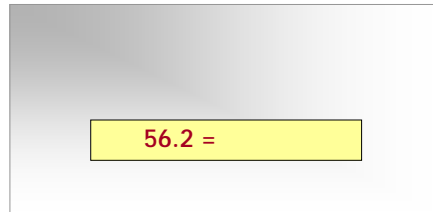
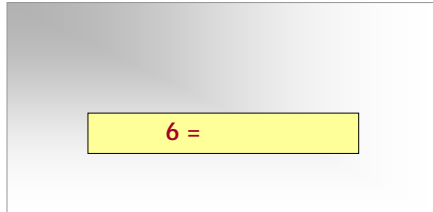
40

6

.(4)

240

4



:

.

:3

)	
		(TVA
500 +	3800		3300
325 -	350		675
1300 -	2700		4000
170 +	750		580

2002

:

1125

%14

-1

-2

%50

-3

%46

-4

%14

%41.9

%58.1

-5

-6

13

%47.3

240

-7

300

%80

(240) (%82.4)

