



INFORMATION
international SAL

RESEARCH CONSULTANTS

Socio-Economic Situation in Lebanon

An opinion poll was carried out covering the whole of Lebanon, whereby the sample was representatively distributed over the 6 Lebanese districts. Respondents expressed their opinions regarding the economic situation and different issues related to that including governmental policies and the TVA.

The poll also covered rental issues such as the rental law and suggestions for amendments, health insurance and social security, electricity and telecommunication sector issues, as well as the effect of the economic situation on families' abilities to educate their children. Moreover, opinions were taken regarding the assassination of the ex-MP Elias Houbeika.

Part 1 of 3

11 Pages

2002

-

"

"



-

"

"

:

.I

-1

13955

1963

26

1970-11-1

_____ -2

9727

2000

2001

2001

2001	2000	
355646	350195	
44351	44167	
25961	23750	
1697	-	.
994	807	..
43	46	
428692	418965	

1.2

.2001 2 4822

.2000 29 225

_____ -3

_____ -

:

_____ -

%8.5

%6

%9

.(%15

) %7 %2

%38.5 %23.5

.2001 24 5102 5101

_____ -

%30

.(90)

_____ -

%6

%9

.(90)

_____ -

%8.5

%6

%9

%9

:

5/1

5/4

%10

.

.%85 %50

225

2001-4-1

33

60

5

%4

%14

()

%80

%90

%150

2001 24

2001 1

2000 9 248

-4

%25

%23.5 %38.5

1.5

()

:

()

2000	2001			
85	-107	362	255	
146	26	201	227	
283	300	265	565	
514	219	828	1047	

2000 (146+85) 231

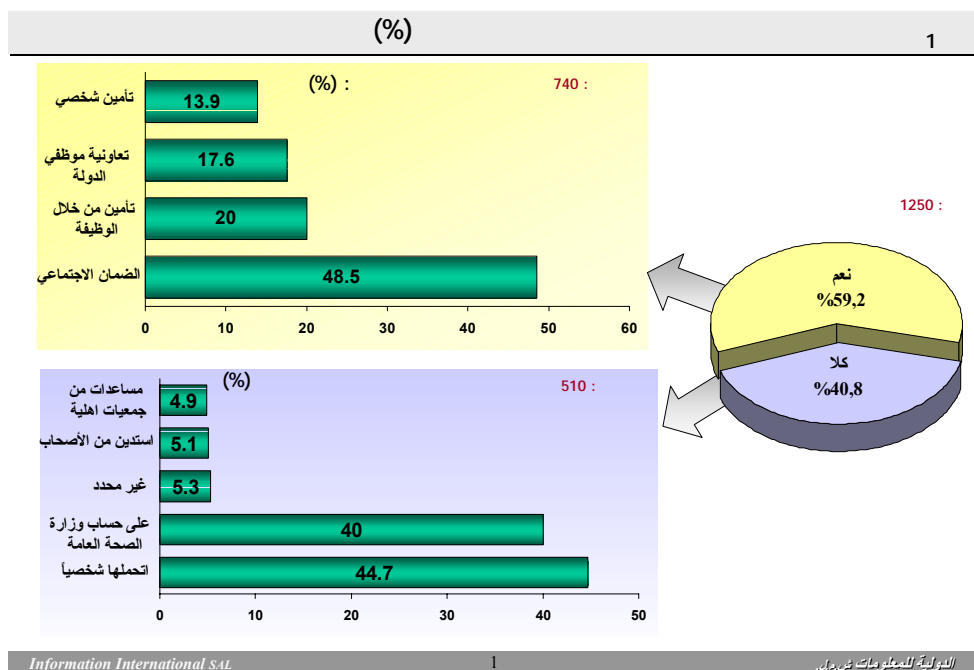
81 2001

(107 26)

.II

-1

%59.2 %40.8
%40 : %44.7
%4.9 %5.1
%5.3
%48.5 :
%17.6 %20
1150) %13.9
(1) .(



-4

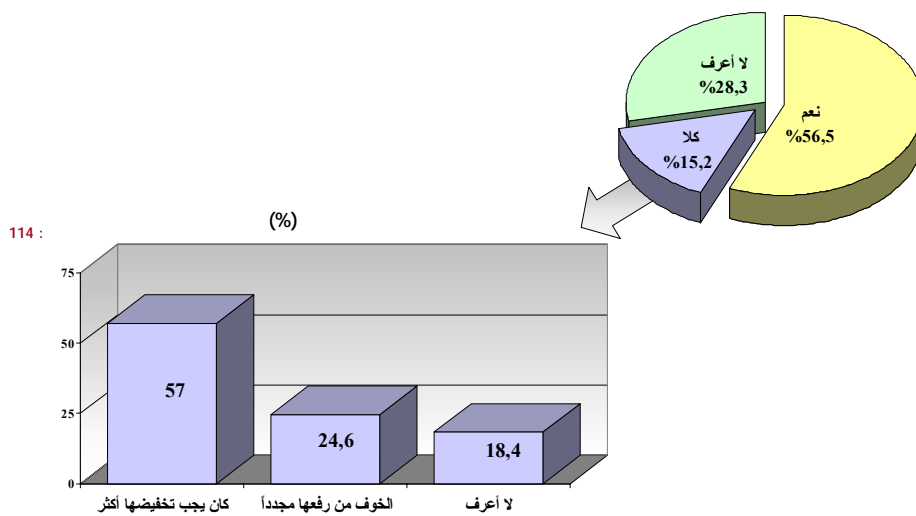
%38.5

%23.5

" %28.3 %15.2 %56.5
 : %57
 (3) ." " %18.4

(%) 3

750 :



Information International SAL

3

الدولية للمعلومات ش.م.ل.م.

-5

%49

%51

-6

%1.5

%36.3

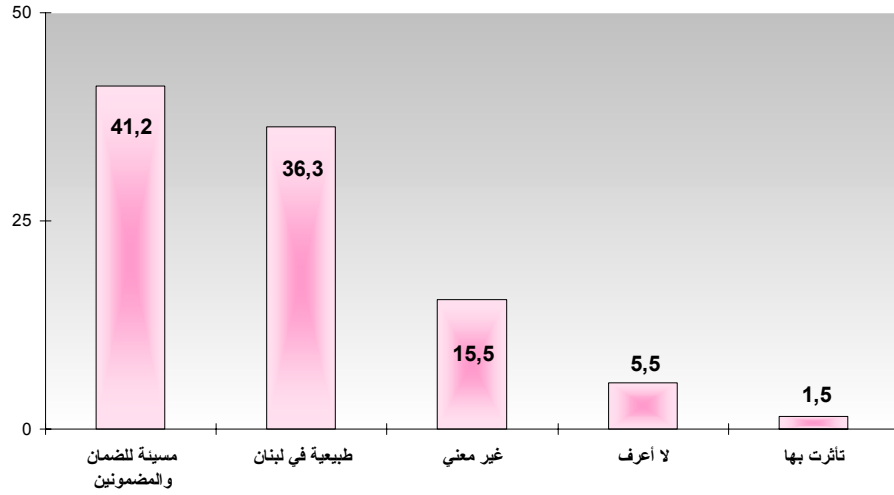
%41.2

(4) . "

" %5.5

" %15.5

(%) 4



1250 :

Information International S.A.

4

الدولية للمعلومات ش.م.ل.

%41.2

" %7.8 "

" %17 "

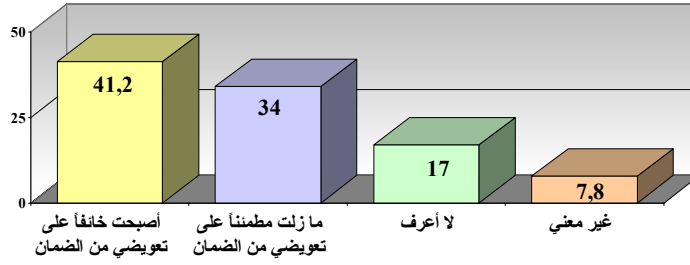
%34 .

(5) .

%3.6

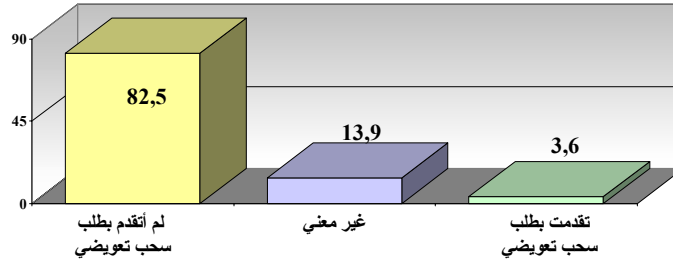
(%) :

5



359 :

(%) :



359 :

Information International SAL

5

الدولية للمعلومات ش.م.ل.د.

1.2

:

%13

%56.5

1000

%41.2

900

