



INFORMATION
international SAL

RESEARCH CONSULTANTS

Socio-Economic Situation in Lebanon

An opinion poll was carried out covering the whole of Lebanon, whereby the sample was representatively distributed over the 6 Lebanese districts. Respondents expressed their opinions regarding the economic situation and different issues related to that including governmental policies and the TVA.

The poll also covered rental issues such as the rental law and suggestions for amendments, health insurance and social security, electricity and telecommunication sector issues, as well as the effect of the economic situation on families' abilities to educate their children. Moreover, opinions were taken regarding the assassination of the ex-MP Elias Houbeika.

Part 2 of 3

8 Pages

:



_____ .I

_____ -1

2300

7

1500-1350

750

1700-1400

_____ -2

1.1

-250

" " 300

%27

_____ -3

50

623 2001

617

1230

%7.4

600

%.49

1000

380

.II

-1

%13

%87

%95.7 :

%93.2

%93.9

%94.1

(%54.9)

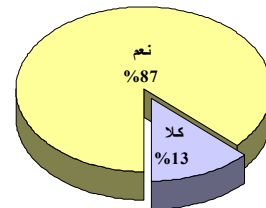
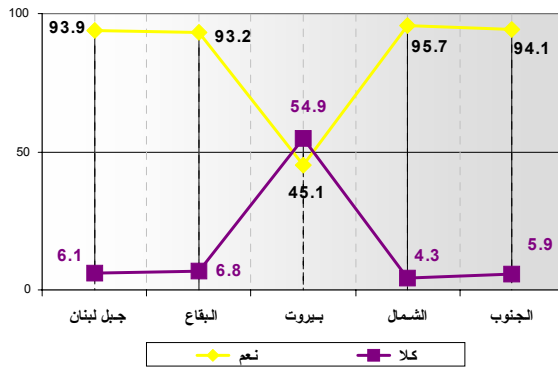
.%94 %87

.(1) 7

(%)

7 =

1



1250 :

Information International S.A.L.

1

الدولية للمعلومات ش.م.ل.ل.

-2

%43.6

" %31 %25.4

:

%18.4 %32.5 %2.4 %2.7 %3.2 %14.9

%2.3 %18.3 %1.5

-3

%54

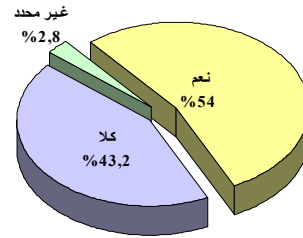
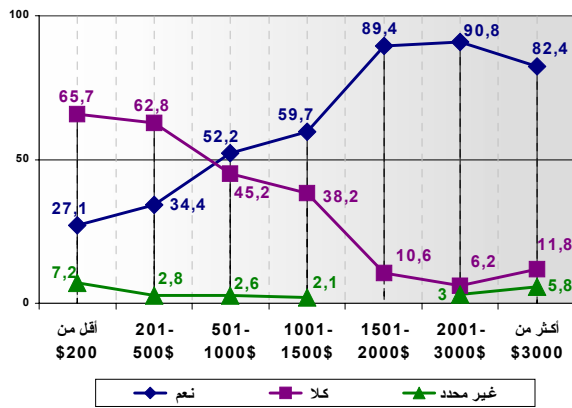
%2.8 %43.2

200 %27.1

%90.8

(2) 3000-2000

(%)



1250 :

Information International SA.

2

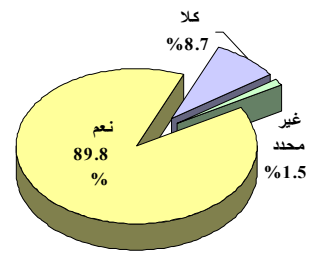
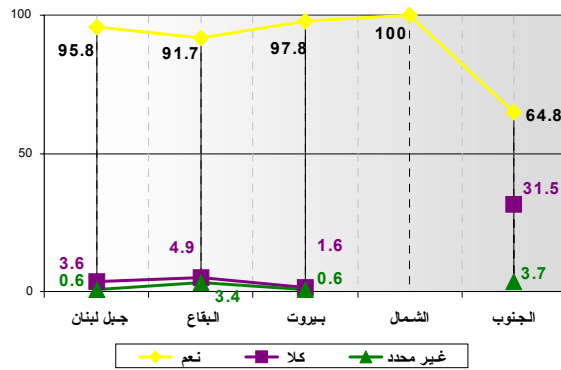
الدولية للمعلومات ش.م.ل.م.

-4

%2.2
 %1.5
 (%100)
 .(3) %91.7 %95.8 %97.8 (%64.8)

(%)

3



1250 :

Information International SAL

3

الدولية للمعلومات ش.م.ل.

%73.2

." %2.1 " %9.3 %15.4

-5

%14.8

%44.1 :

%7.5

%12.5

" %7.1

%2

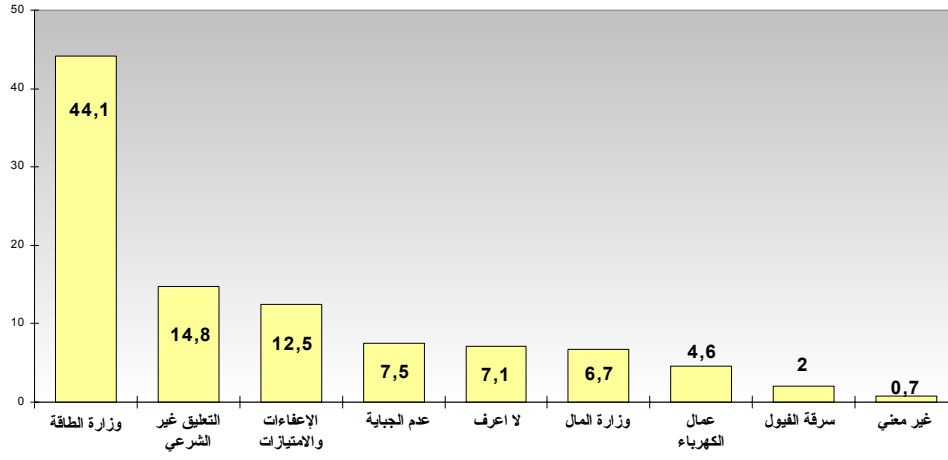
%4.6

%6.7

.(4) " %0.7 "

(%)

4



1250 :

Information International SAL

4

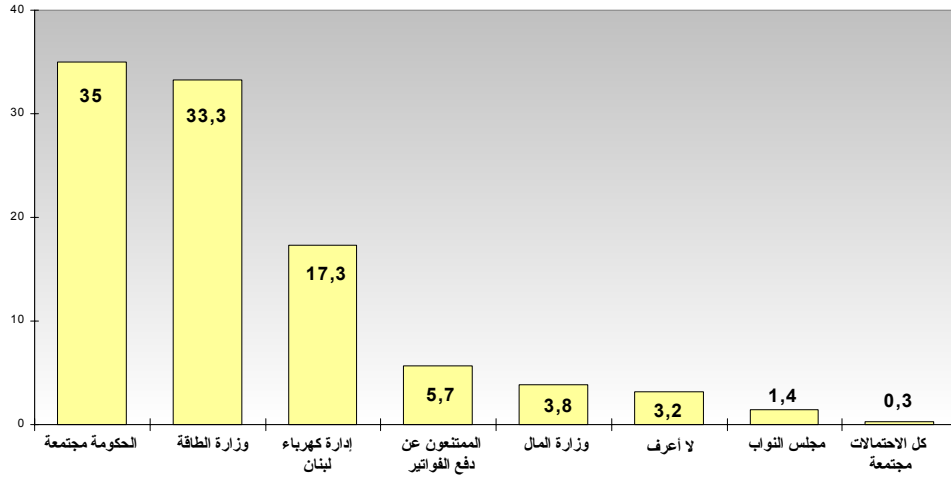
الدولية للمعلومات ش.م.ل.

-6

%1.4 %33.3 %35
%3.8 %5.7 %17.3
" (5) . " %3.2 %0.3

(%)

5



1250 :

Information International SAL

5

الدولية للمعلومات ش.م.ل.

-7

%77.6

" %2.4 " " %16.3 %3.7

%91.2

%67

%68.2

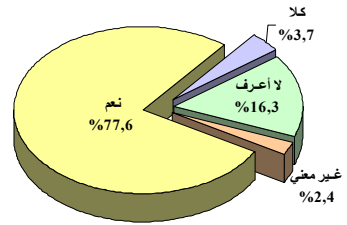
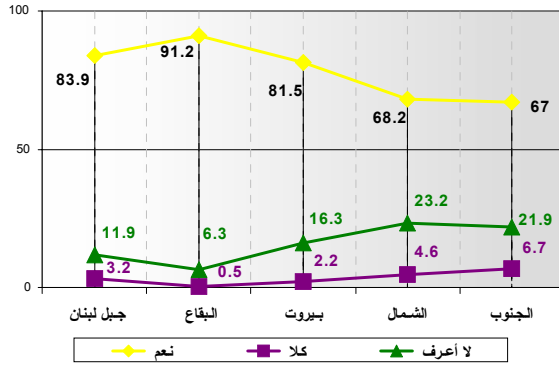
%81.5

%83.9

.(6)

(%)

6



1250 :

Information International SAL

6

الدولية للمعلومات ش.م.ل.

" " %16.8 %16.6 %66.6

() %94

%97.8

300-250

) %62

%89.8

" " -

" "

7 -

(%54) -

140

\$20

1.8 -