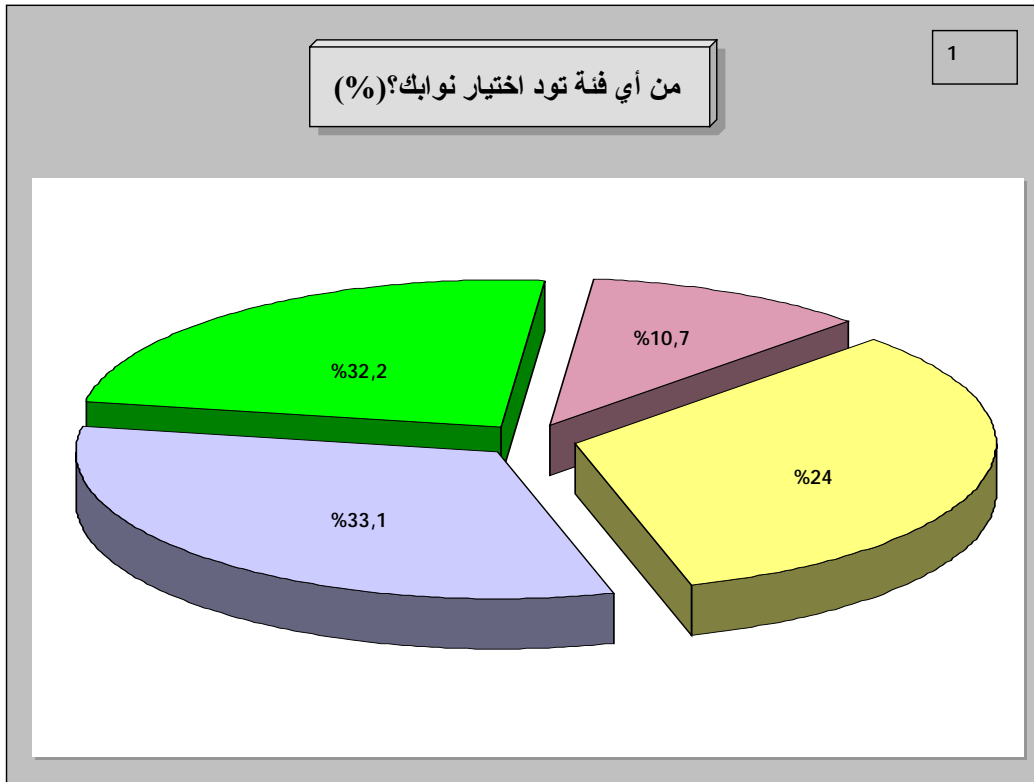




1996

" %50  
1996  
%23.2  
%26.8  
%18.1  
1996  
%27.5  
%32.2 %33.1  
%24  
( ) %10.7



.%29.2

%34.6

%37.1

( %44.4 %33.5)

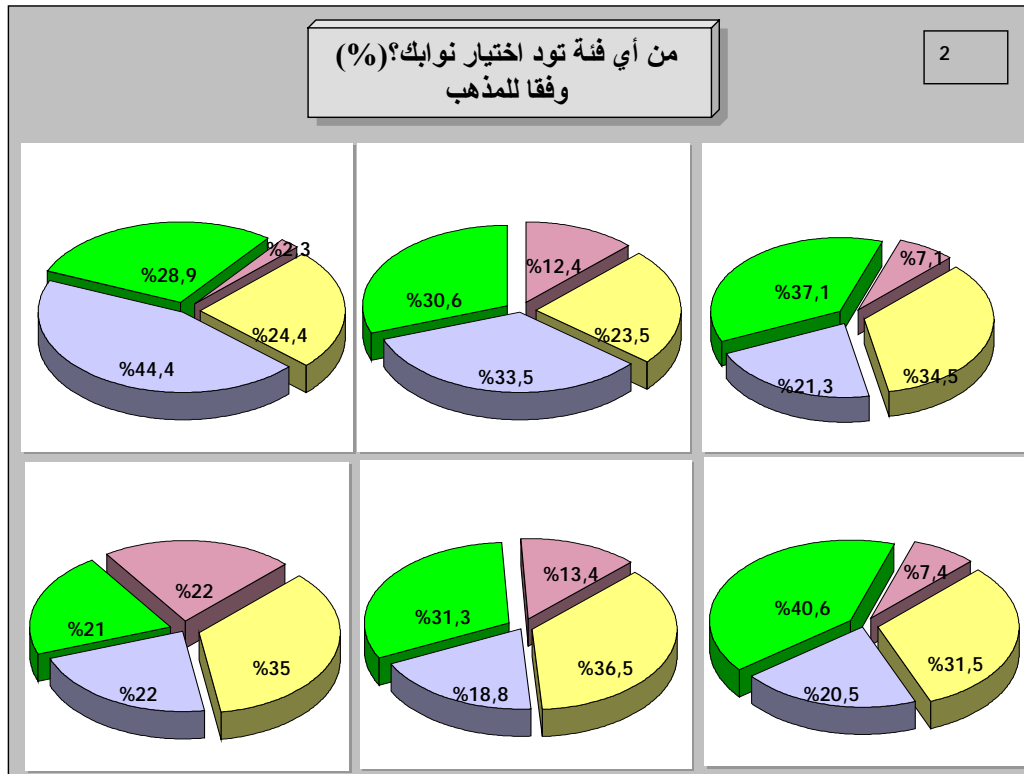
.%34.5

.( %28.9 %30.6)

%31.5

%40.6

.(2 ) ( %35 %36.5)



24-18

%37

34-25

%35.9

.%33.7

44-35

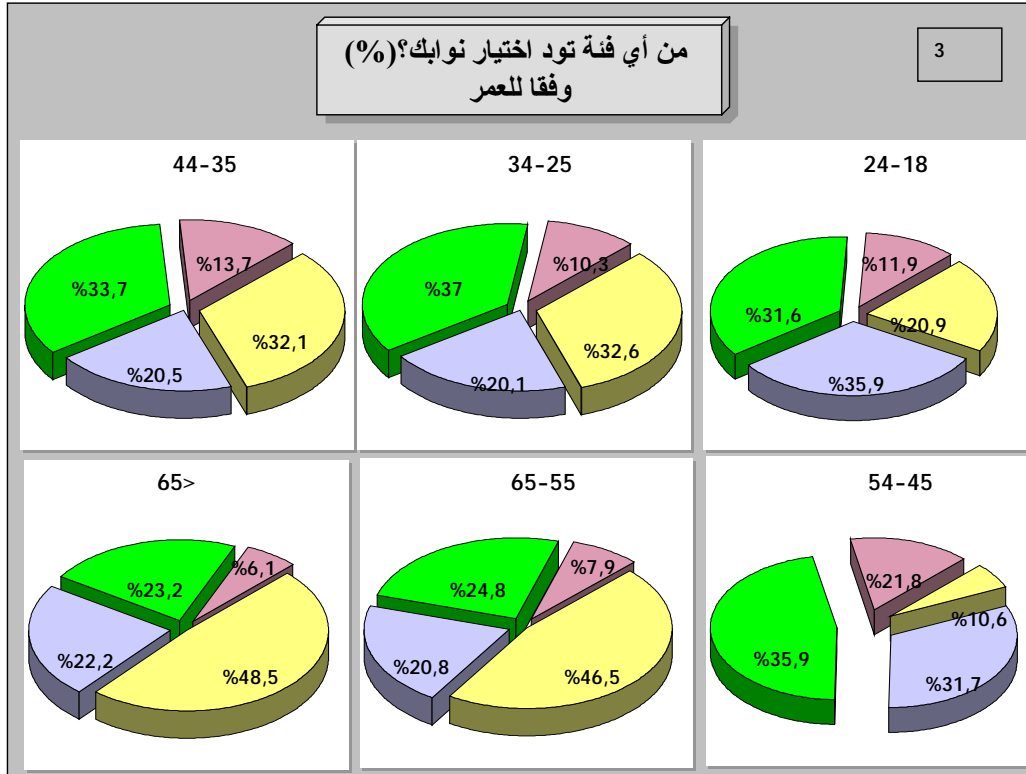
64-55

%48.5

65

%46.5

( 3 ) .



:

1994-1992

14 13

( ) .

" "

%38

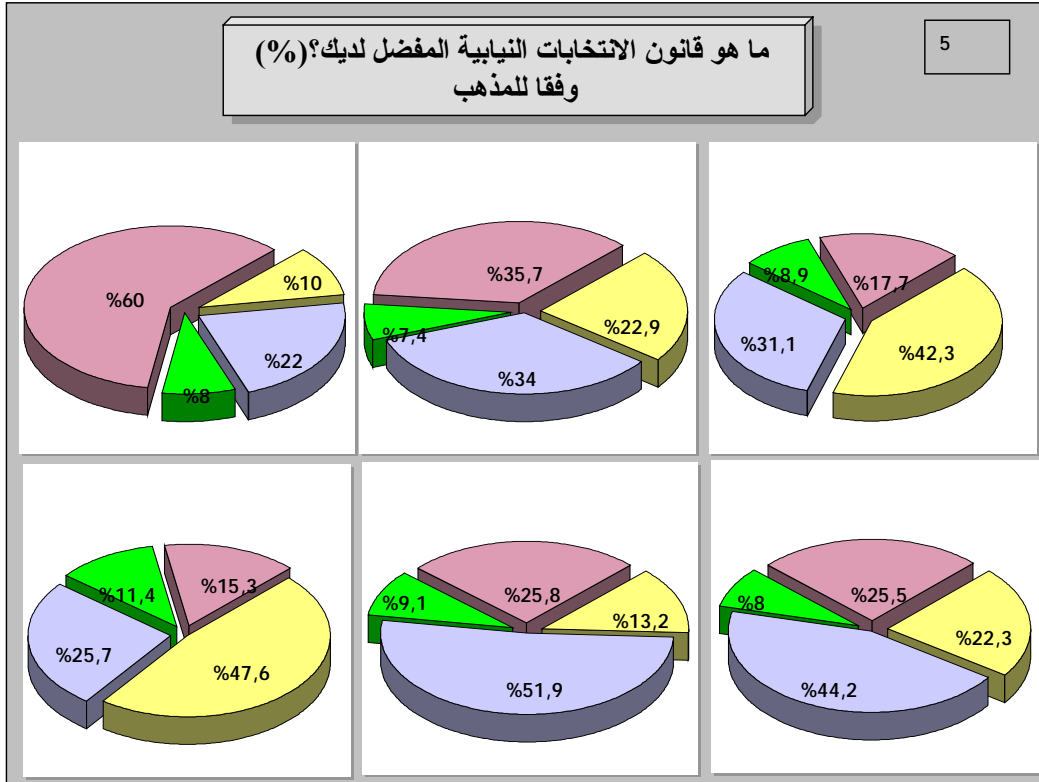
%26.3

%27.2

" (%8.5)

( 4 ) .





%44.5

%37,6

%36.9

.%46.6

.%35.1

20.6	35.1	13.6	36.9	26.6	
46.6	31.7	44.5	33.3	37.6	
20.6	5.4	2.9	10.4	4.6	
12.2	27.8	39	19.4	31.2	

( )

%48.4

%24.1

. %51

%14.8

%8.8

%40

%53.7

%46.3

%61.5

%44.6

%59.4

"

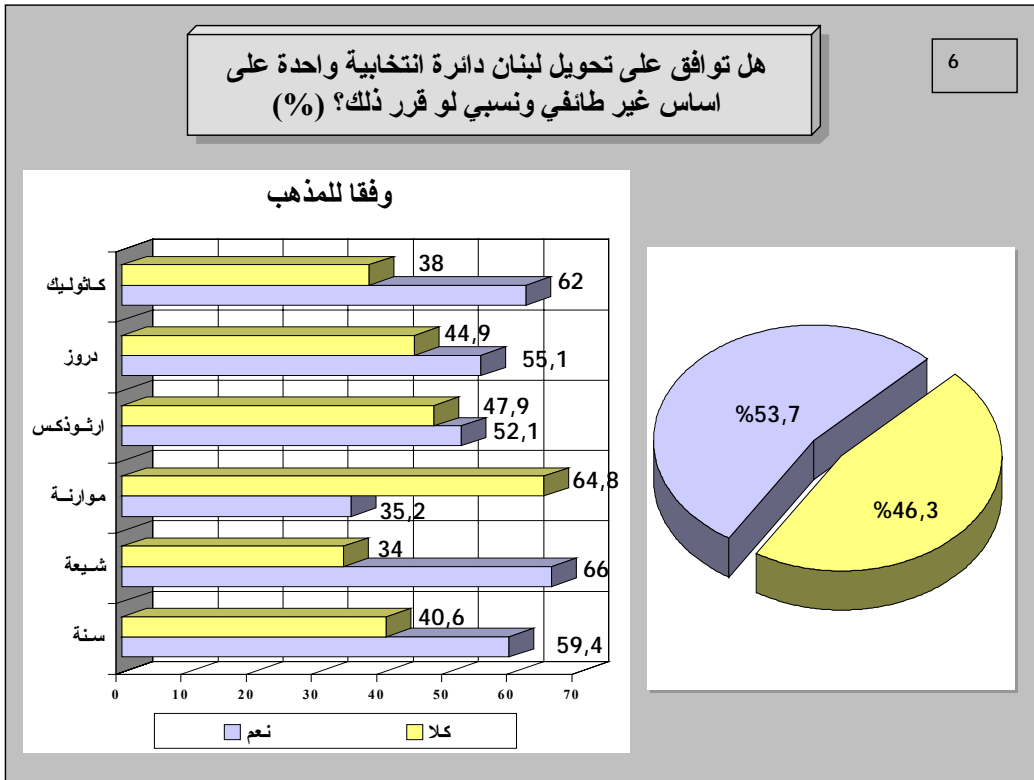
%62 %66

.(6 ) (%35.2)

"

%52.1

%55.1





(%52) " %33.6  
 " %14.4 "

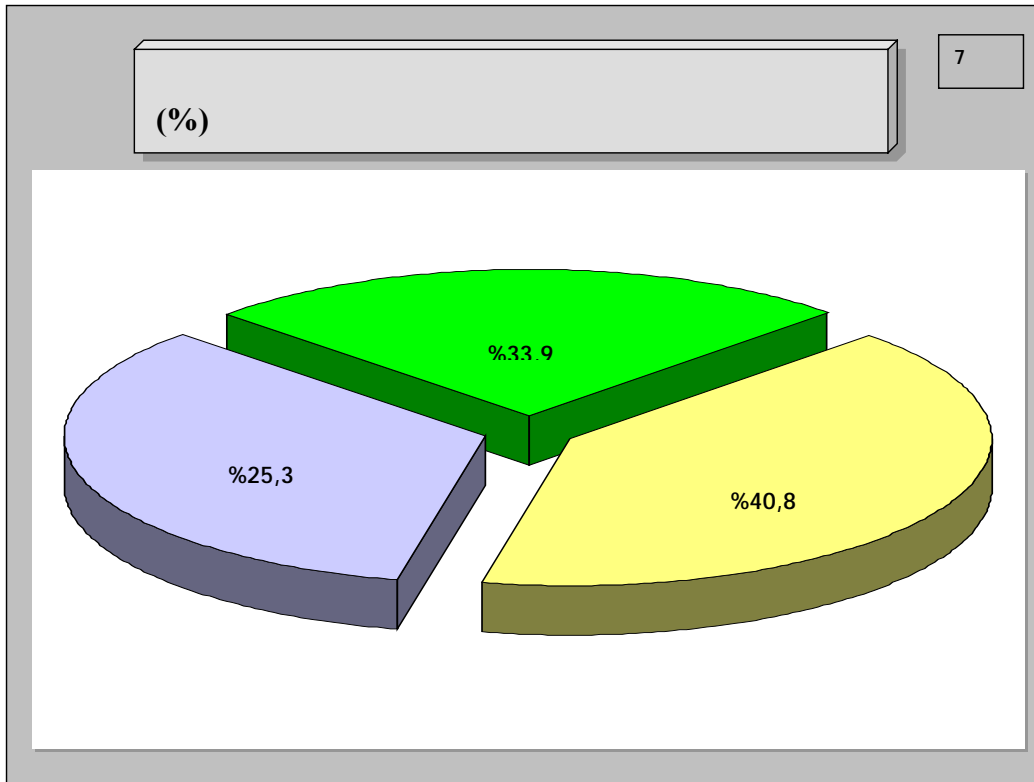
) %14.6 %34.1 " (%51.3  
 "

.%39 %70.4

(%77.6) %62.6  
 . %42 %50.9

%40.8 . "

.(7 ) %25.3 %33.9

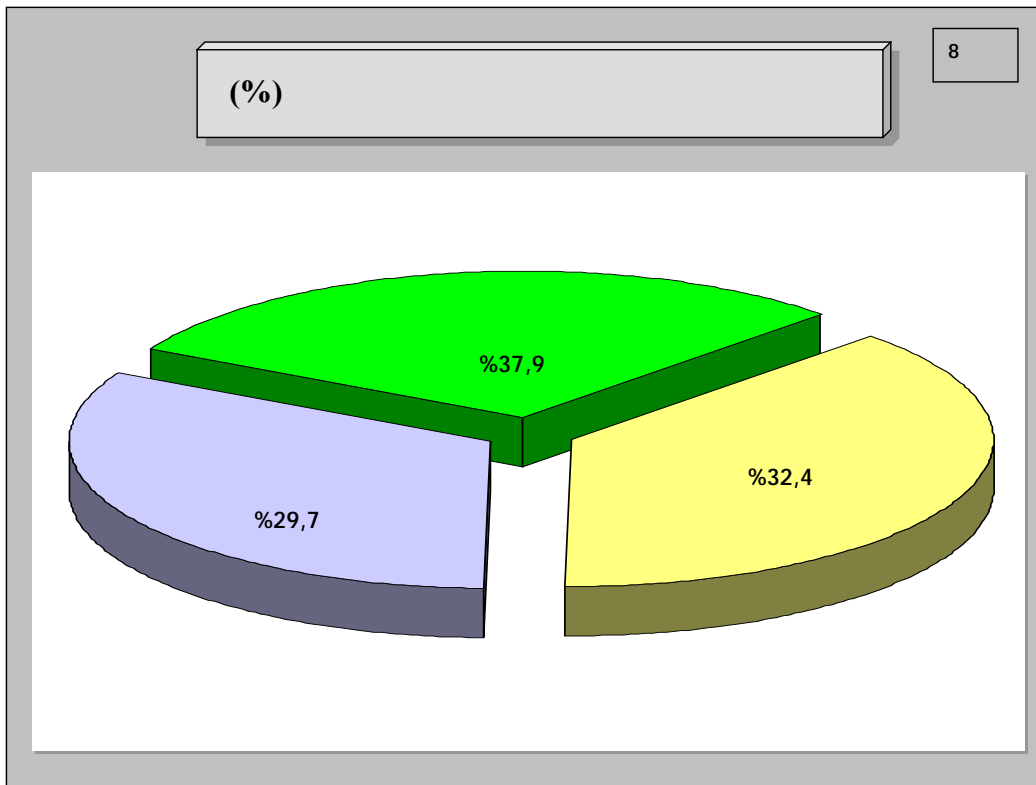


%37.9 :

.(8 )

%29.7

%32.4



1996-1992

%58.3

%41.7

%66.1

%.%49.3

"



(%52.2)

:

%32.4

%36

%47.6

%51.1

.%30.1

**128 " 108**

99 "

108

"

"

128

108

(%42.6)

%18.9

%38.5

**18**

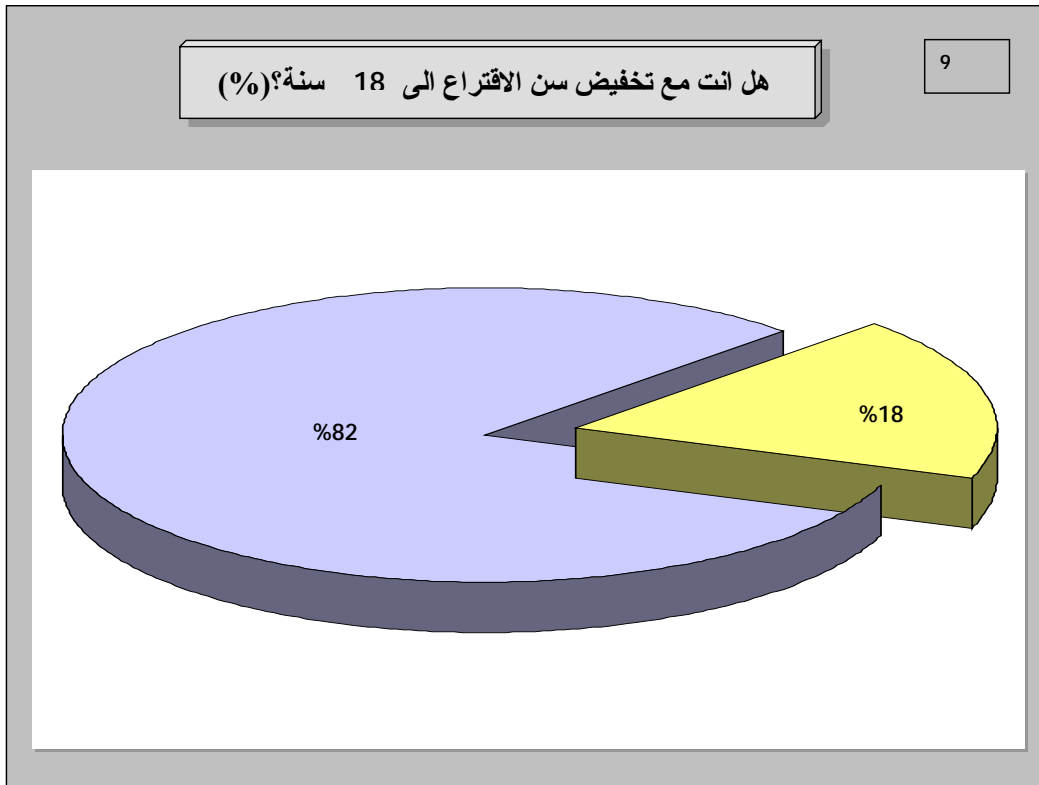
(%82)

18

21

( 9 ) .

%18



. %78.6

%85

:

%80

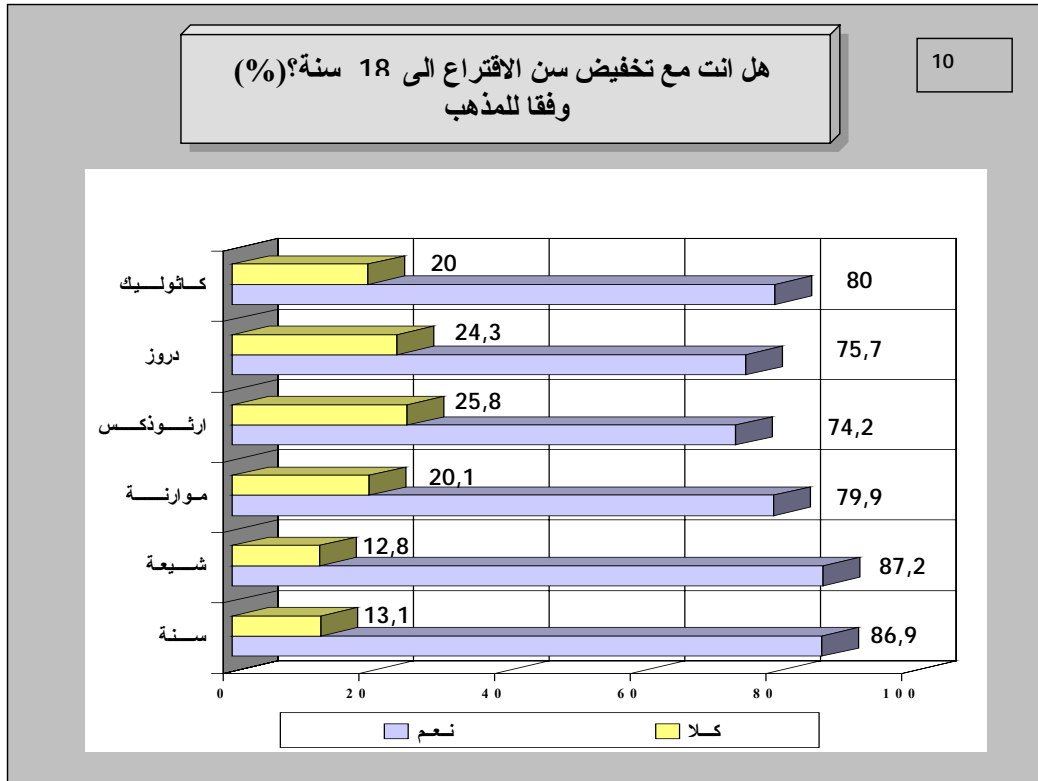
. %75.7

%74.2

%79.9

.(10 ) %87.2

%86.4



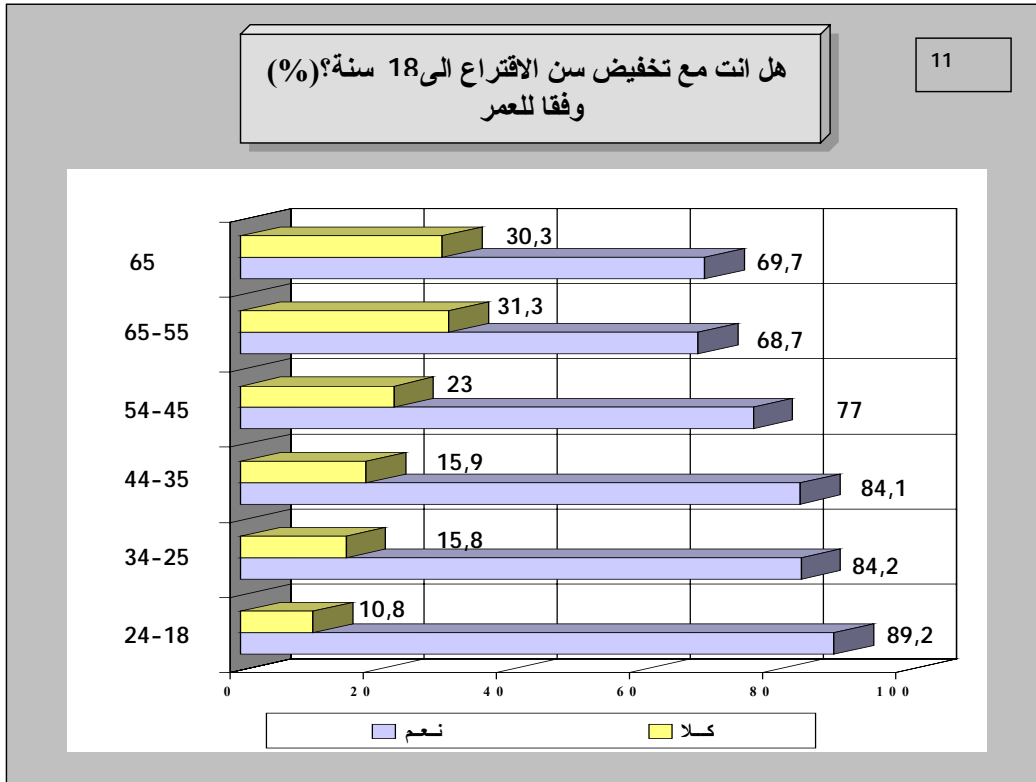
"

%89.2 :

44-35 34-25 %84.2 " 24-18

%68.7 54- 45 %77

.(11 ) " 64-55



%54.9

"

"

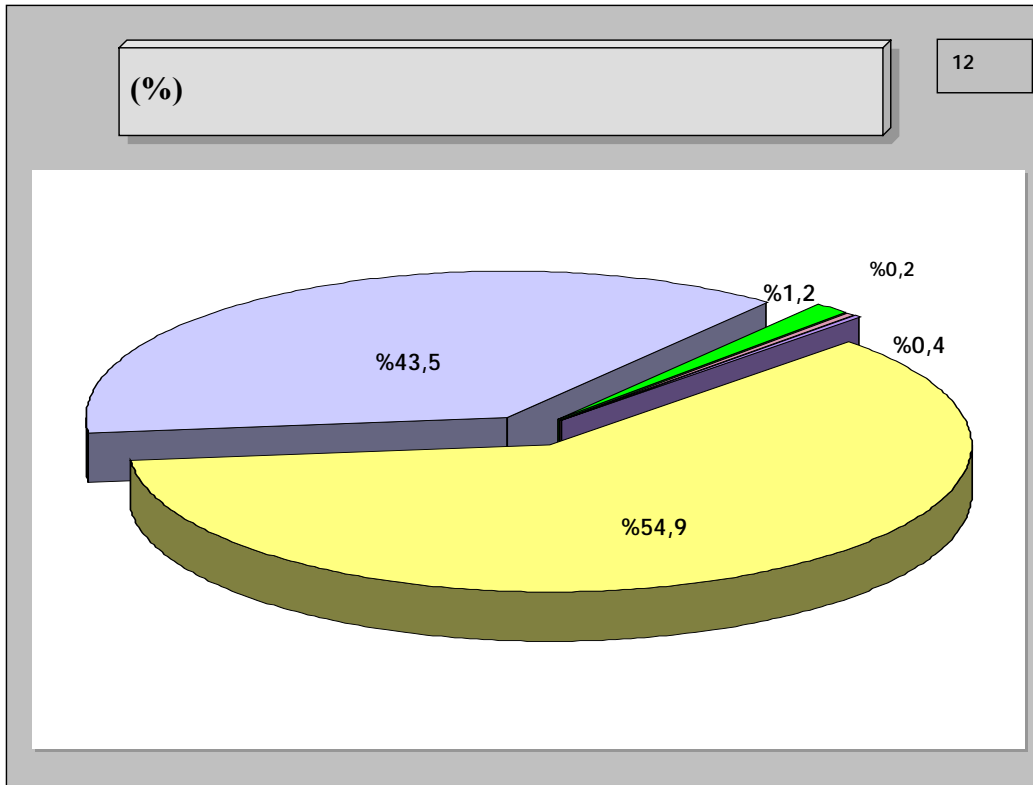
%43.5

0.2)

(%0.4)

%1.2

.(12 ) (%)



%65.3

%71.6

%51.5

%56.5

" " "

(%70.3)

%7.6

%22.1

%64.2

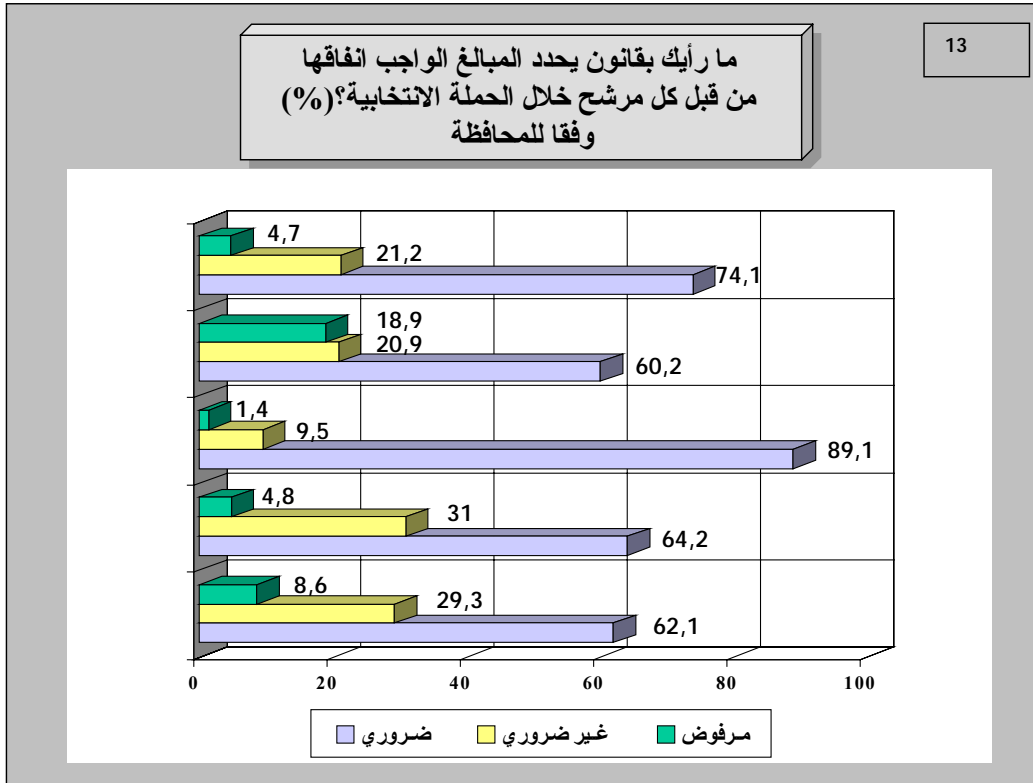
%62.1

%60.2 :

.(13 )

%89.1

%74.1



(%50.5)

%91.4

%70.9

%59.2

---

"الشركة الدولية للمعلومات"

تستطلع حول أداء الحكومة ورئيس الوزراء المقبل (3/2)

2000

---

%40.3

%26.5

%33.3

---

(%52.7)

%32.7

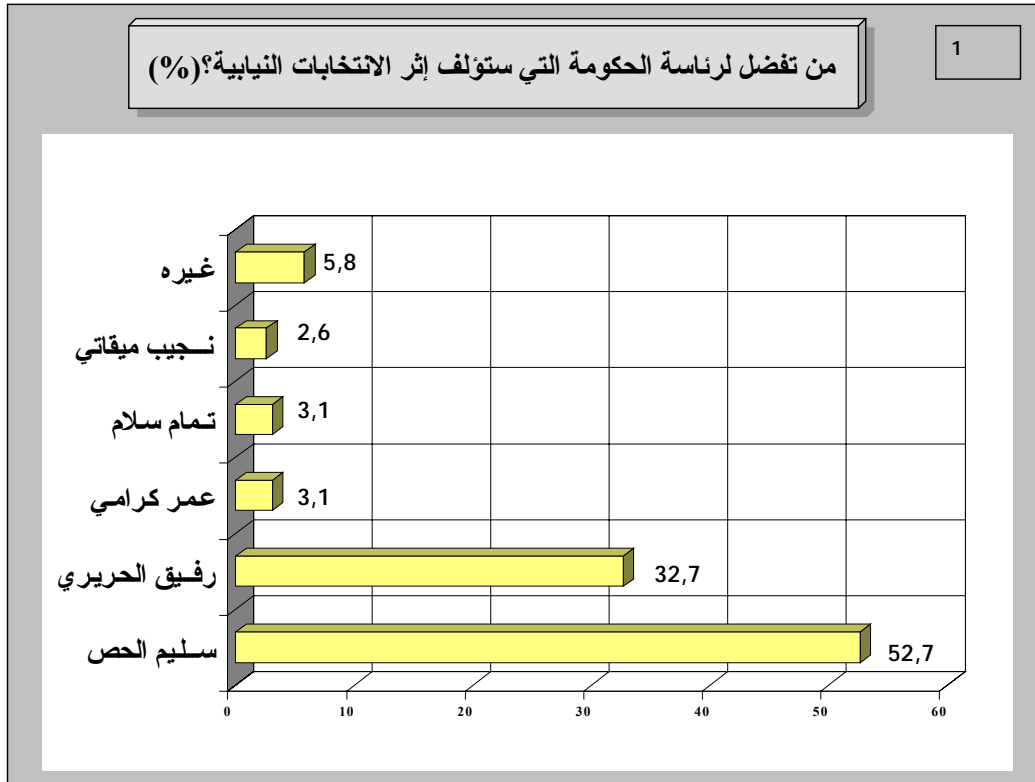
%3.1

.(1 )

8

(%5.8)

.%2.6



%47.4    %60.4

%23.9    %38.7

%66.7

%67.9 :

"

%38.4

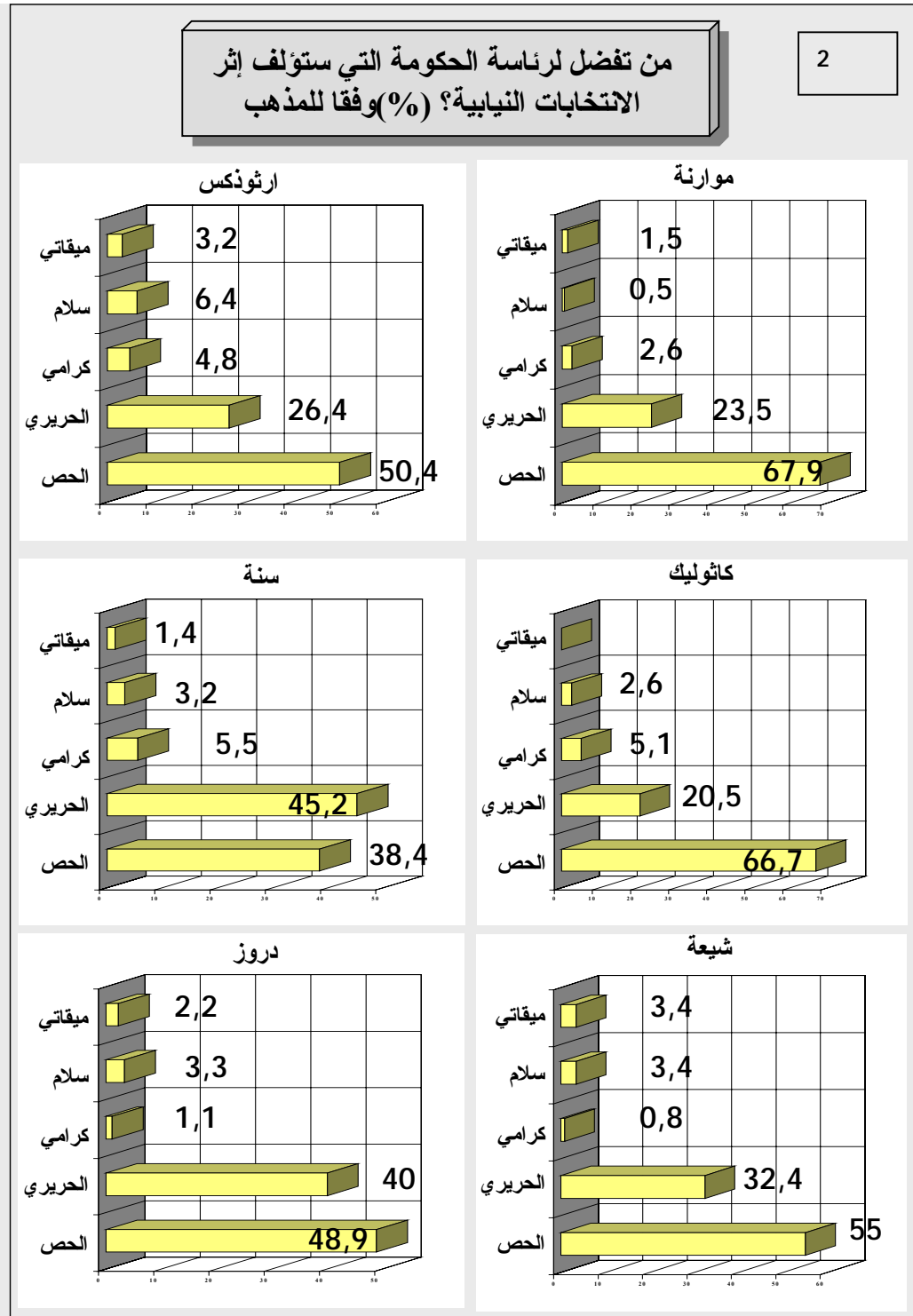
%48.9

%55

%50.4

20.5 %26.4 %23.5  
 ) %40 %32.4 %45.2

.(2



: %8,3 %9 %33.1 %39.3 : \_\_\_\_\_  
 . %23.9 %67 : \_\_\_\_\_

%49.2 %45.5 : \_\_\_\_\_

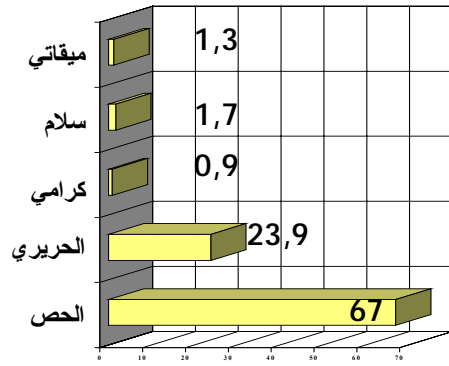
%12,4 %28.4 %47.9 : \_\_\_\_\_

. (3 ) %21.8 %62.9: \_\_\_\_\_

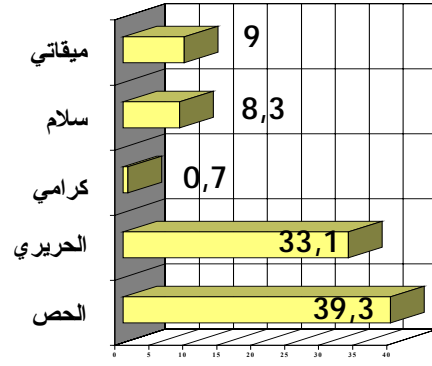
من تفضل لرئاسة الحكومة التي ستؤلف إثر الانتخابات النيابية؟ (%) وفقاً للمحافظة

3

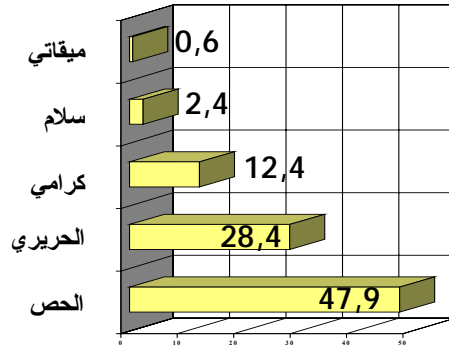
جبل لبنان



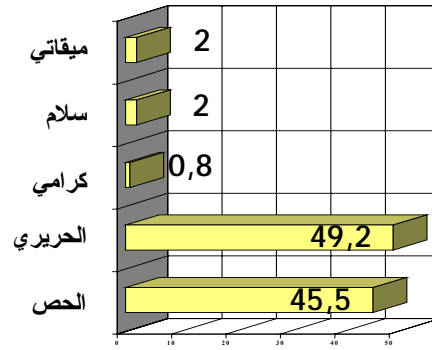
بيروت



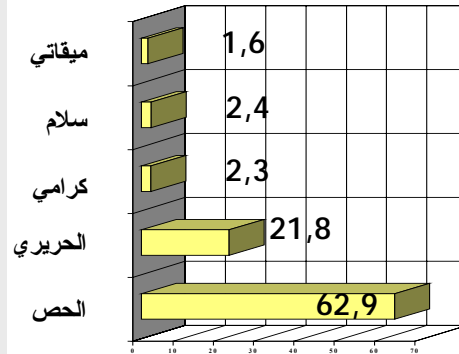
الشمال



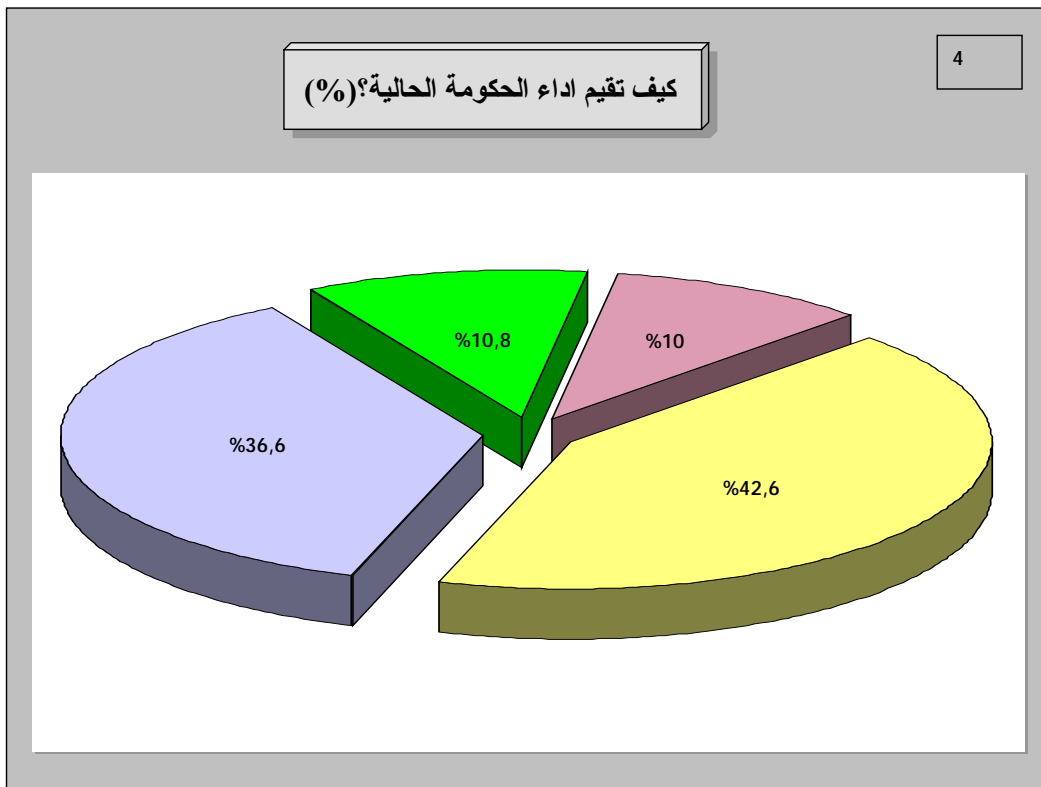
الجنوب



البقاع



%10      %10.8      %36.6      %42.6 :  
(4 )



.      %14.6      26.1      %59.3

%37.9      %46.7  
%40.7

.      %33.1

%49.1  
 40.2 %44  
 .%51.9 %47.7 %43.2 %

12.1	12.1	10	8	8.9	10.6	
47.7	51.9	40.2	42	43.2	33.8	
32.7	29.6	37.8	44	27.4	49.1	
7.5	6.4	12	6	20.5	6.5	

:  
 %25.9  
 %70.9 .(%51.8)  
 %17.8  
 ) %45.7 .  
 (%45.5

12.2	6.2	10.6	9.6	17.8	
70.9	28.6	51.8	32.9	36.8	
15.3	39.3	30.3	51.8	37.4	
1.6	25.9	7.3	5.7	8	

"  
 . %54.8 %64.6  
 %10.6 %18.1

%59.5

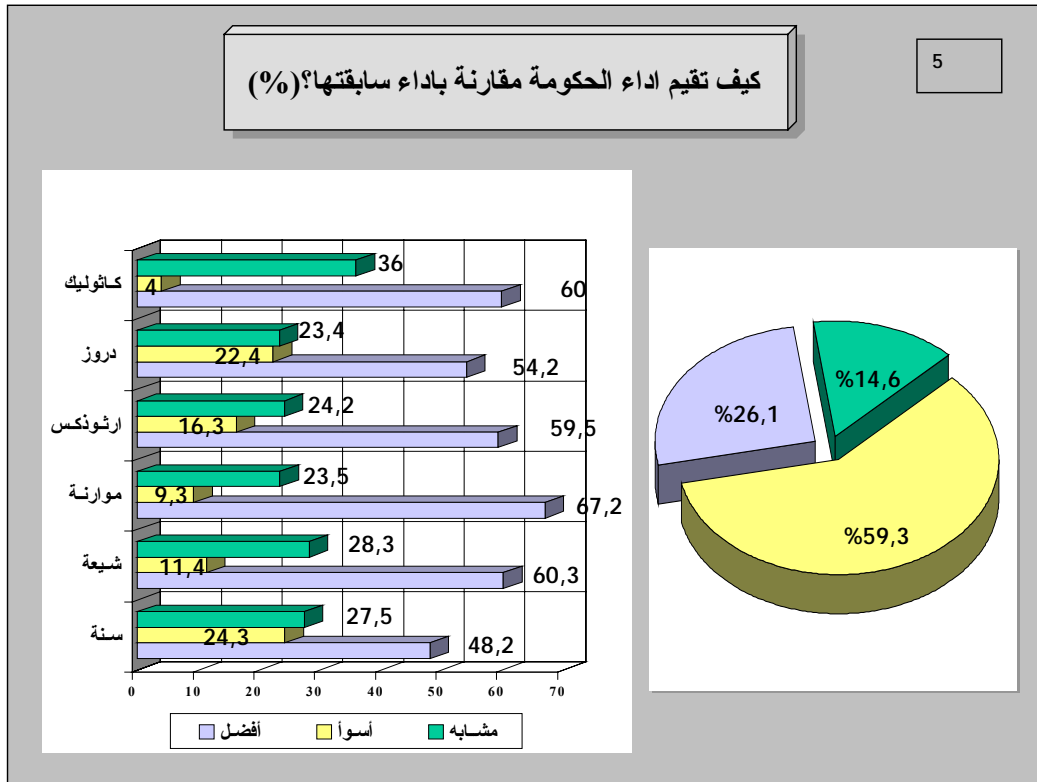
%60

%60.3

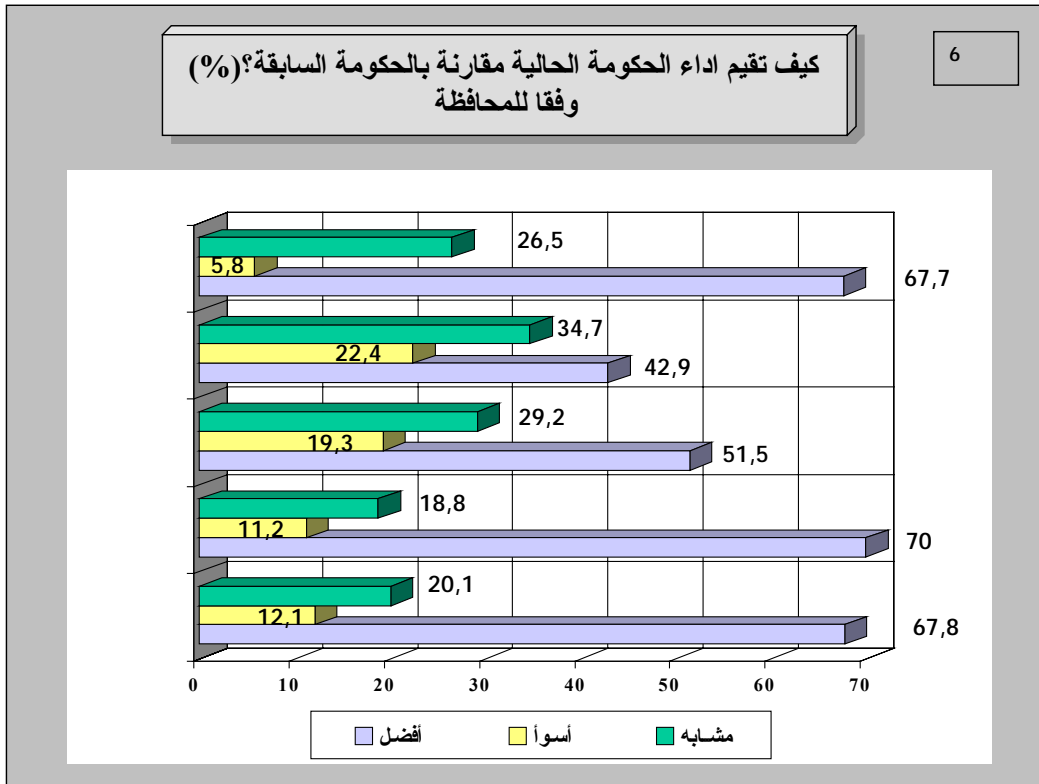
%67,2

. (5 ) %48.2

%54.2



%67.8  
 %51.5                      %70  
 .(6 )                      %67.7                      %42.9



%67.7

%32.3

(%42.2)

%27.5

(%30.4)

40.7

%22.5

%

%75.3

%78.8

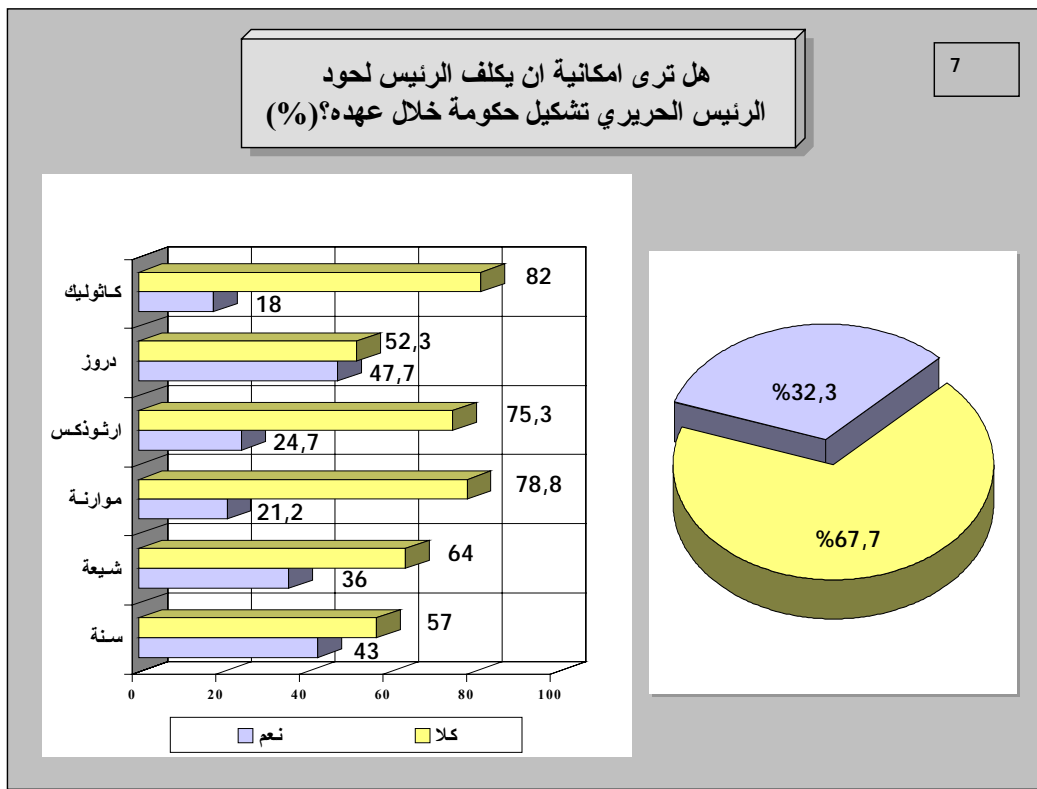
%82

( ) .(7

%52.3

%57

%64



42.7

%33.9

%40.2

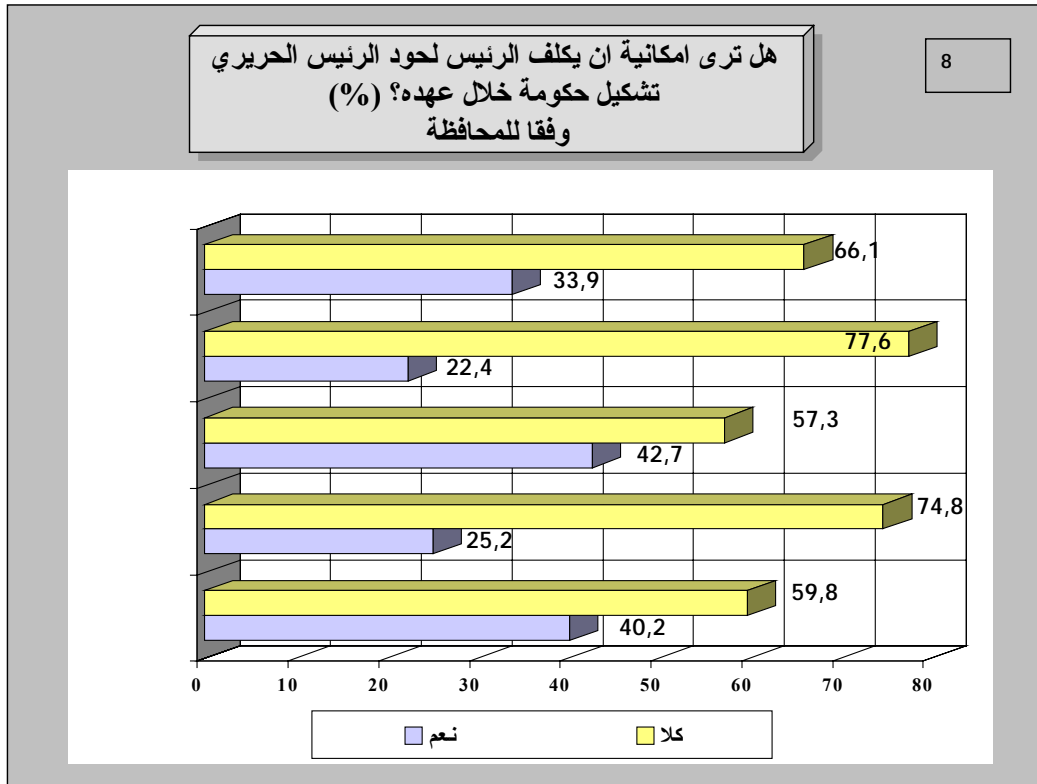
%

)

%22.4

%25.2

.(8



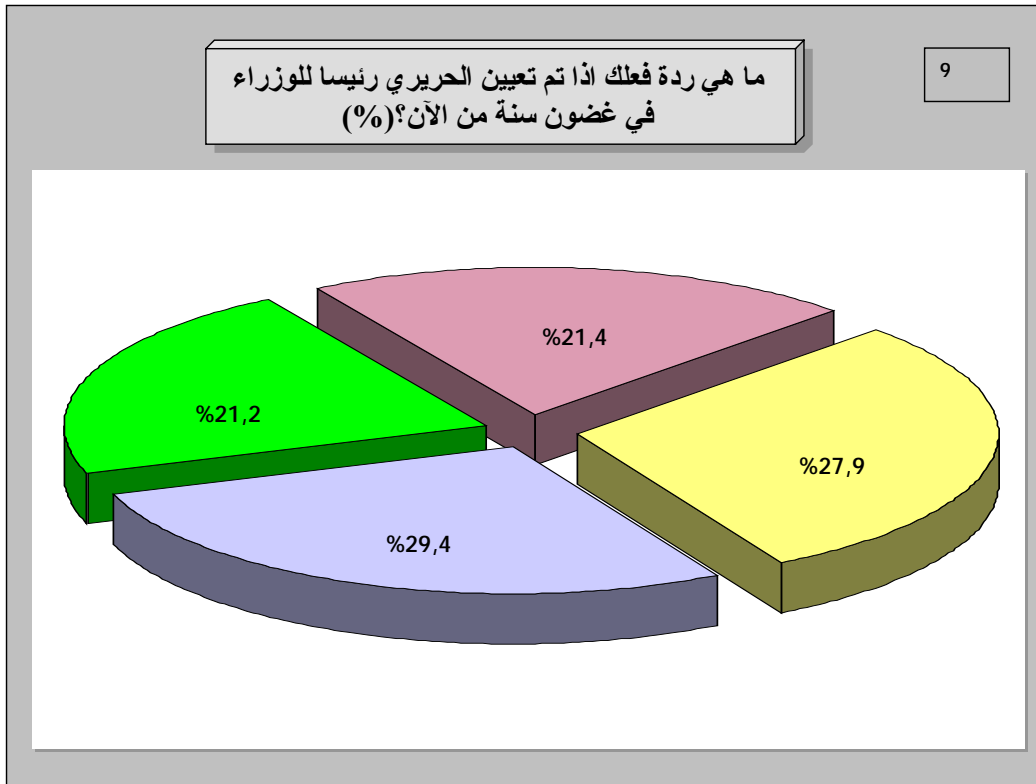
"

%21.4

%27.9

%29.4

. (9 ) %21.2



%32.6 :

%26

%28.7

%12.7

%28.8

%29.6

%14.9

%26.7

. %31.6 %32.8  
 ( %40 %33.8)  
 (%31.8)  
 .%35.9

16.8	15.6	13.1	24	32.6	28	
31.8	22.2	35.9	10	14.7	12.6	
26.2	31.6	28.3	18	18.9	32.8	
25.2	30.6	22.7	48	33.8	26.6	

%29.3  
 %37.6 %38  
 %34.7 %37.6

18	34.7	10.9	17.6	25.8	
13.8	17	37.6	17.2	19	
37.6	20.8	17.9	38	25.9	
30.6	27.5	33.6	27.2	29.3	

**"الشركة الدولية للمعلومات"**  
**تستطلع عن قانون الدوائر الاربعة عشر (3/3)**

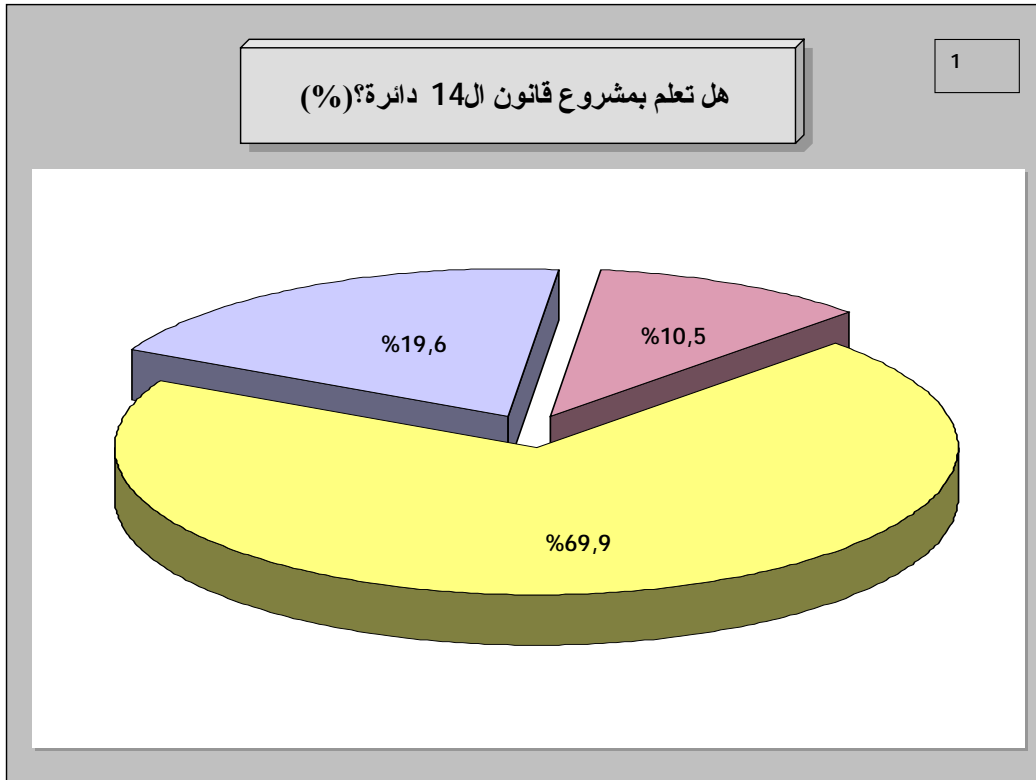
14

%19.6

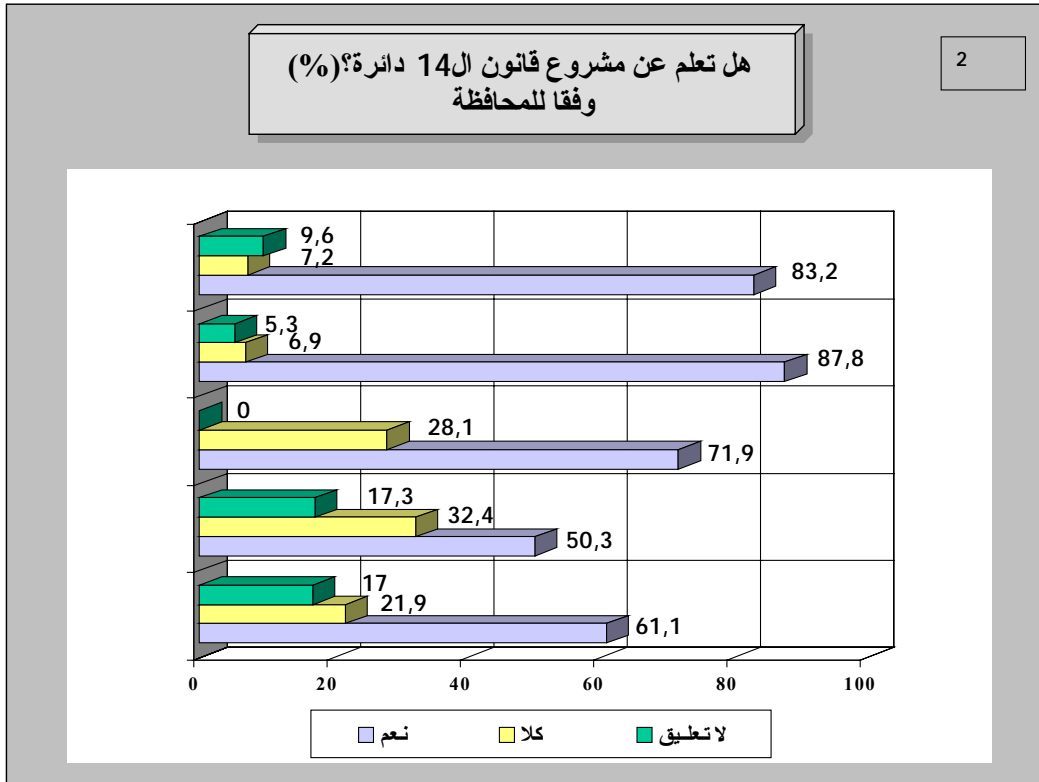
%69.9

( ) (1).

%10.5

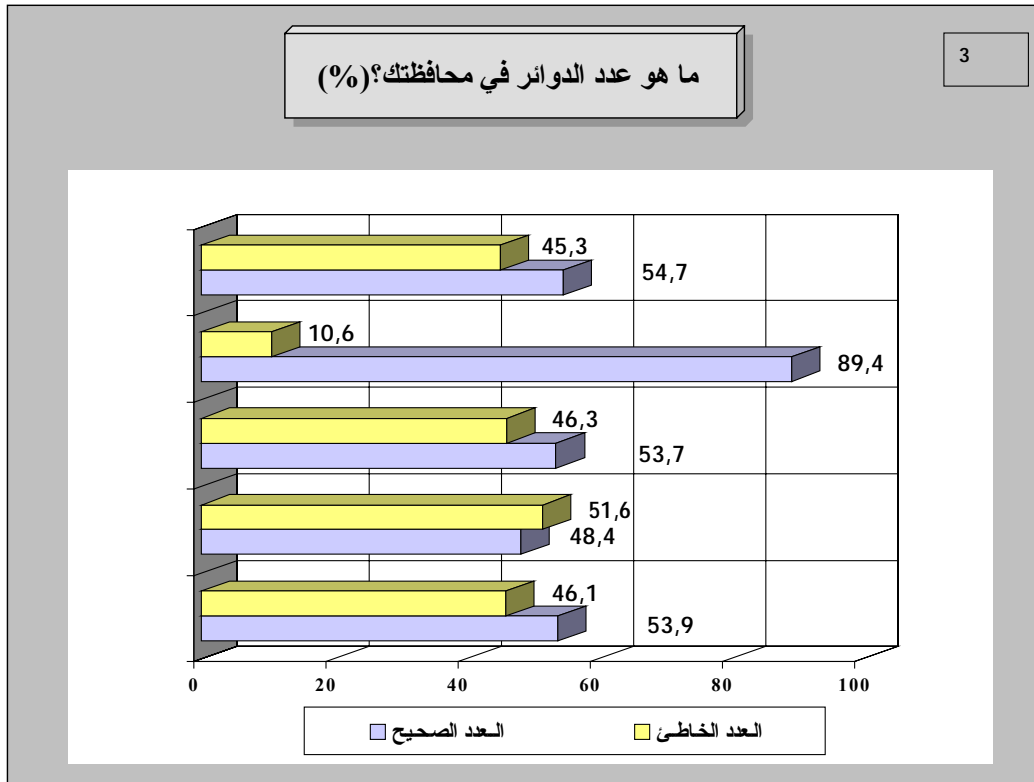


) (83.2%) (87.8%)  
 %50.3 %61.1 (71.9%)  
 .(2 )



(93.9%)  
 %87.8  
 %85.7 %86  
 %44.6 %58.7 %61.1

%46.1  
 %51.6  
 %46.3  
 .(3 )                      %10.6 "                      %45.3



%53.9

%48.4

3

%88,4

%95.7

%85.7 :

%88.1

%74

%92.7

%28.9

%72.9

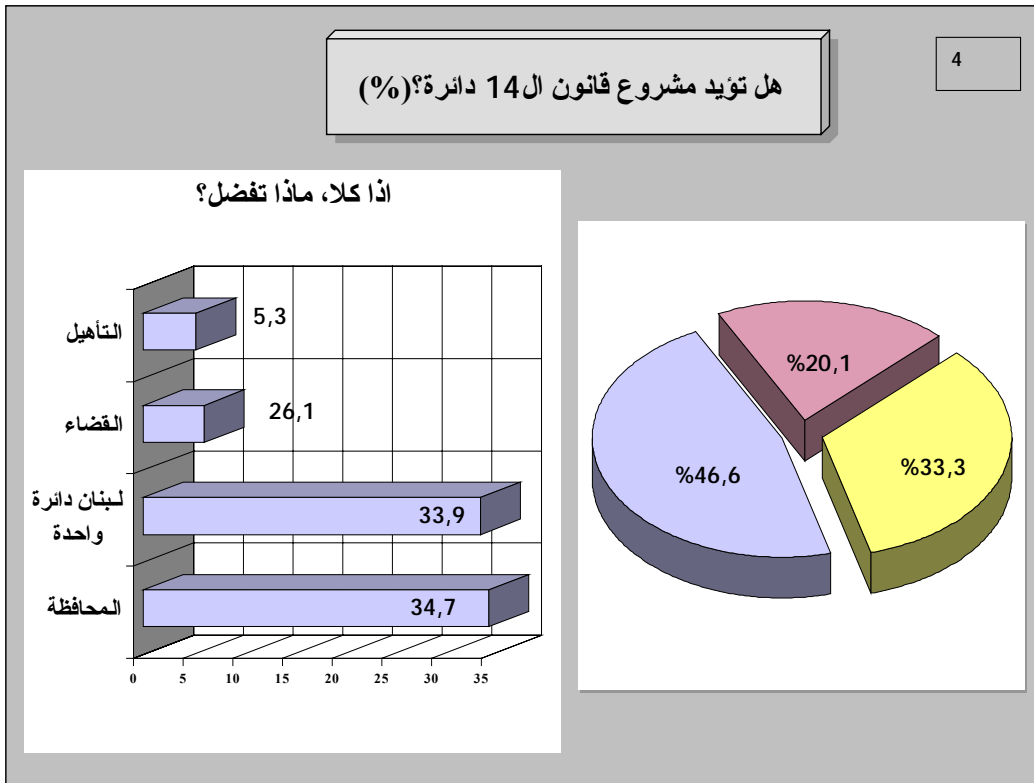
%34.8

%33.3

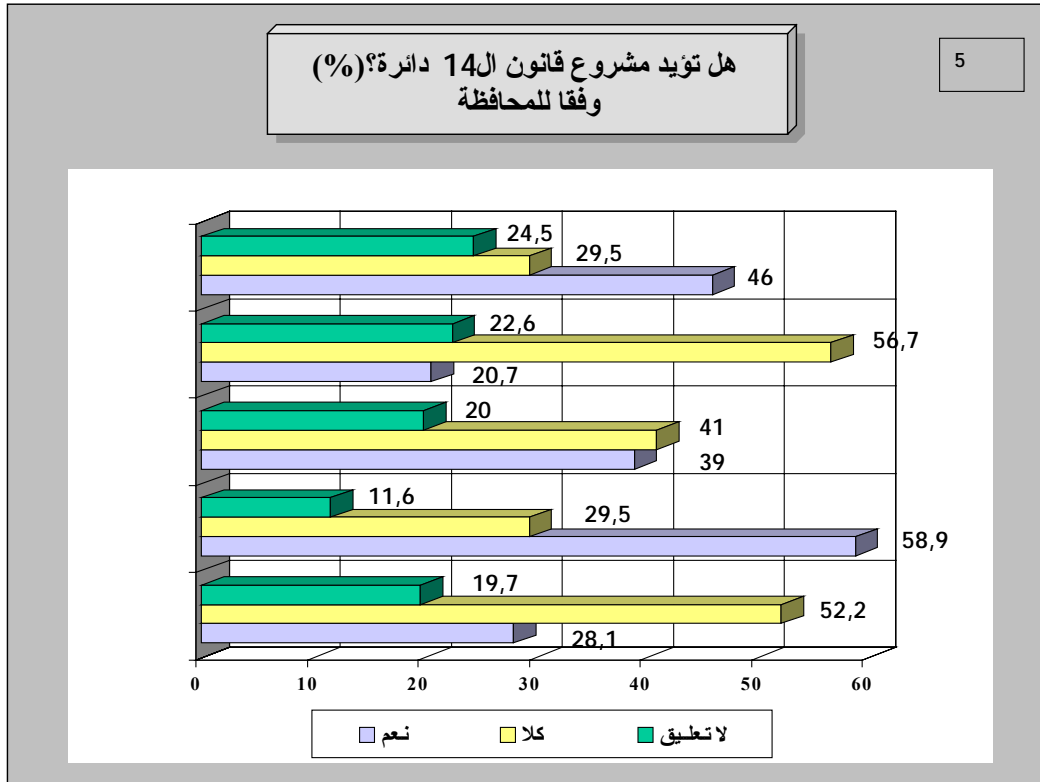
.(4 )

%20.1

%46.6



20.7) (%28.1) (%39) (%46) %58.9  
 (% ) (5).



%78.6

%70.8

%34.8      %48.9      %50

%25.6

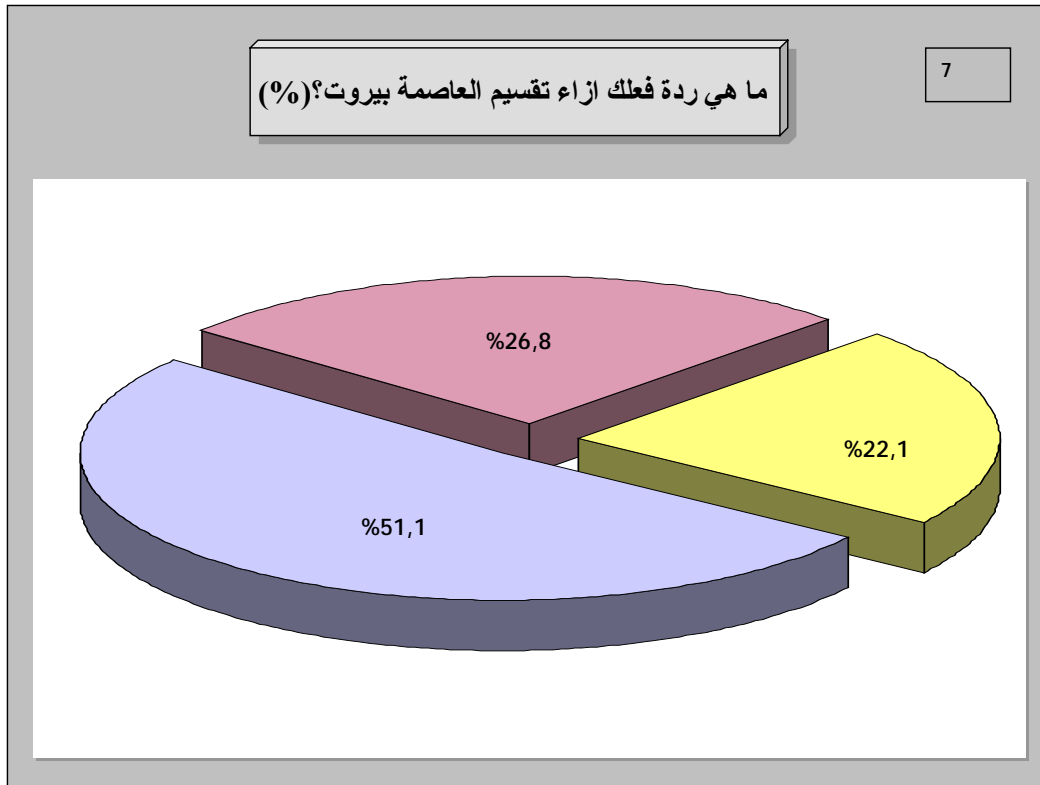
%11.6      %28.1

%4.8



62.5) %73.7 %76.9  
.(%36.4) (%52.4) (%  
. %76.2 %80

%22.1 %51.1  
(7 ) %26.8



%27.9

%13,6

16.2



1224

246 (%32.5) 398 :

) 182 (%11.8) 145 (%20.1)

.%6.9 84 (%13.8) 169 (%14.9)

99/12/3 99/11/20

.99/12/10 99/12/8

. %49.4 50.6

34 18

. 54-35 %28.5 %53.2

.%18.3 55

53.7 %46.3)

%20.5 %24.3 %23.9 :

. 4.1 8.7 %15.5

.%3

:

2.5		1.1	
5.3		2.9	/
2.9		13.5	
0.7		1.1	
3.5		2.7	
0.6		23.9	
3.1		5.5	
1.1		14.7	
0.1		14.1	
		0.8	/

1000 500 " .  
 %17.8 500 %27.8 (%44.5)  
 1500 . 1500 1000  
 %10  
 %36.8 (%55.4)  
 . %1.3 %6.5  
 " .  
 %29.8 %36  
 %3.8 .%27.8  
 .%2.6



.1

.2

14 :

:

:

---

.	"	"	.3
		."2+ -	.4