

(2/2)



:\_\_\_\_\_

(2)

.I

2757 ) 1992

5069

( 2825

1838

247.7

.%73.3

3717

28.8)

48

2002

.(

12.7

%67.7

%59

.(1)

32521

(2002-1993) :1

( )

325	1993
1595	1994
2155	1995
4228	1996
4119	1997
3041	1998
3905	1999
4175	2000
4311	2001
( ) 4667	2002
32521	

2002 2001

:

(2) .%30

\* : (2)

%	
%26	1992
%24	1993
%15.8	1994
%24	1995
%29	1995
%30	1995
%23.3	1996
%16.73	1997
%16.73	1998

%14.64	1999
%14.64	2000
%14.64	2001
%14.64	2002

%80

24

: \*

.

.II

4.2

(2)

4

%23.3

%22.4

%17.8

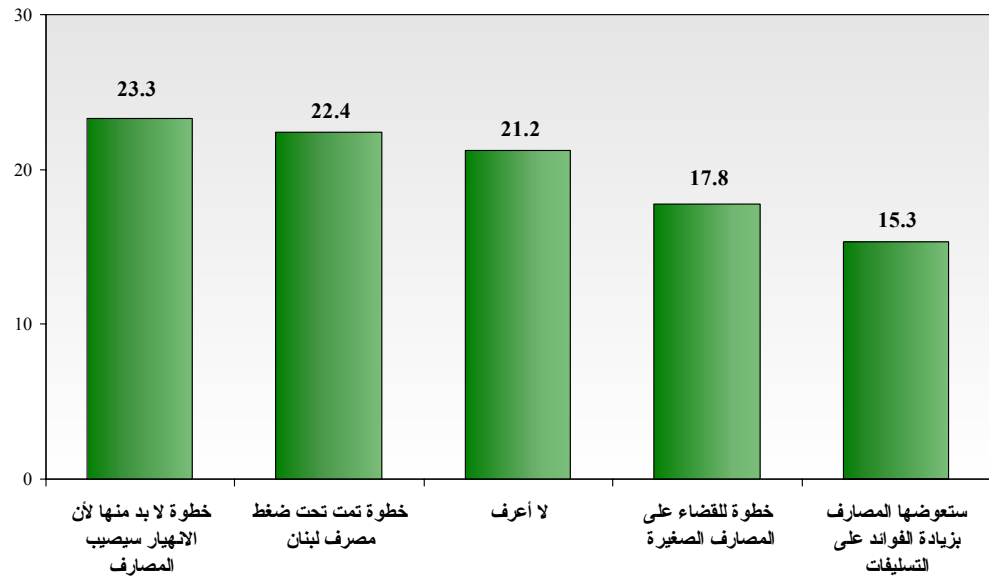
%10

%15.3

.(1 ) " " %21.2

(%)

1



600 :

Information International SAL

الدولية للمعلومات ش.م.ل.

.III

1994

2001

2002

1

393

2002

:

20

%40

-1

.2002-8-31

.( ) 2003-1-31

%10 2003

.

\_\_\_\_\_ .IV

\_\_\_\_\_ -1

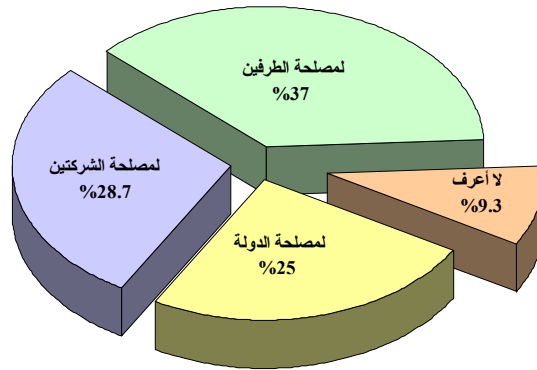
%37

%28.7

.(2 ) "

" %9.3

%25



600 :

Information International SAL

الدولية للمعلومات ش.م.ل.

-2

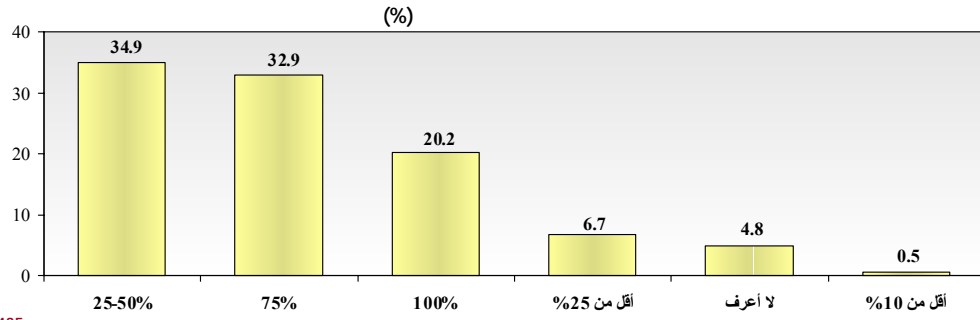
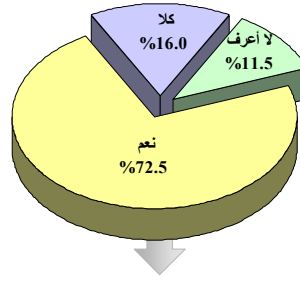
%72.5

." " %11.5 %16

-3

) %34.9  
 (%  
 %50 - %25  
 %6.7 %100 %20.2 %75 %32.9  
 ." (3 ) " %4.8 %10 %0.5 %25

600 :



435 :

Information International SAL

الدولية للمعلومات ش.م.ك.

48	1992	5535	-
	32500	2002	
			%67.7
.%59	%73.3		-
%15.8	1992	%26	-
	1995	%30	
			1994
		.%14.64	

(%45.7) -

(%21.2)

(2003 ) (2001 ) -

(%25) (%28.7) -

%72.5 -

%0.5 ) %10

( %20.2 ) %100 (

-----						
%52.8				600		
-18		%26			%47.2	
-35	%11.5	34-29	%17.8	28-23	%38.2	22
			45		%6.5	44
	%24.4		1000-500		%38	
500-200	%12.4		2000-1500	%16.7		1500-1000
	2000	%6.3	200			%2.2
					.%1.9 ±	