

(1)

"

"



2003

"Information International"

(2)

2000

29

2000

26

)

2002

(

,

2002

2002

.2003

-1

" %1.1

%37.7

%61.2

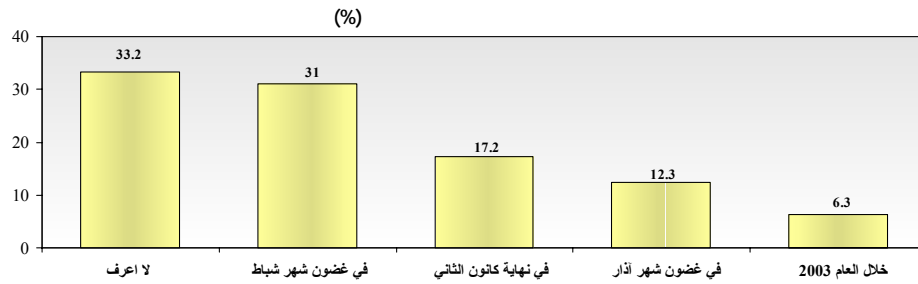
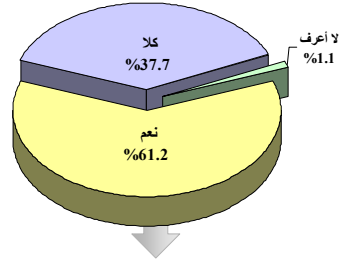
"

-

" " (%33.2)
 %17.2 %31
 .(1) 2003 %6.3 %12.3

(%) 1

600 :



367 :

Information International S.A.L.

الدولية للمعلومات ش.م.ل.

:

%34.1 %65.9 : _____ -
 %57.6 %42.4 : _____ -
 %45.7 %54.3 : _____ -
 %54.2 : _____ -
 %45.8
 %33.9 %65.6 : _____ -
 " %0.5

. %40.6 %59.4 : _____ -
 . %35.7 %64.3 : _____ -

%63.1 :

%36.7

(2) _____ -2

%35.2

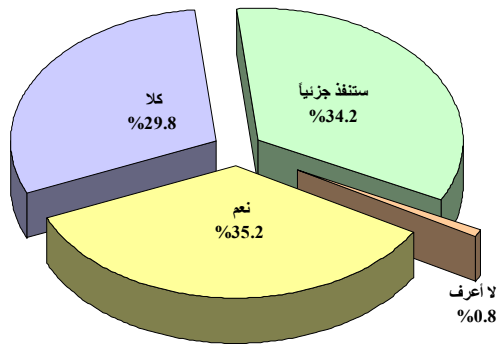
%34.2

%29.8

(2)

." %0.8
 ." (2)

(%) (2) 2



600 :

Information International S.A.L

الدولية للمعلومات ش.م.ل.د.

:

(2)

%27

: _____ -

." %1.2

%35.3

%36.5

(2)

%27.2

: _____ -

%36.4

%36.4

(2) %31.4 : _____ -
%28.6 %40

%28.5 :

%33.4 %37.6

%26.1 (2) %32.2 : _____ -
" " %1.7 %40

(2) %39.6 : _____ -
" " %1 %19.8 %39.6

(2) %35.7 : _____ -
%21.4 %42.9

%35.8 :

%27 %36.2

(2) _____ -3

%32.4

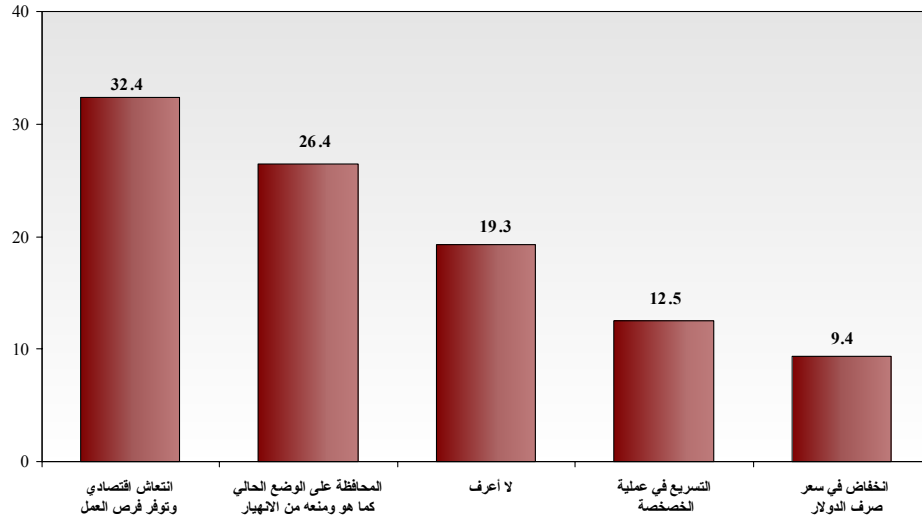
%26.4 (2)

%12.5

" " %19.3

%9.4

.(3)



600 :

Information International S.A.L

الدولية للمعلومات ش.م.ل.د.

(2)

-4

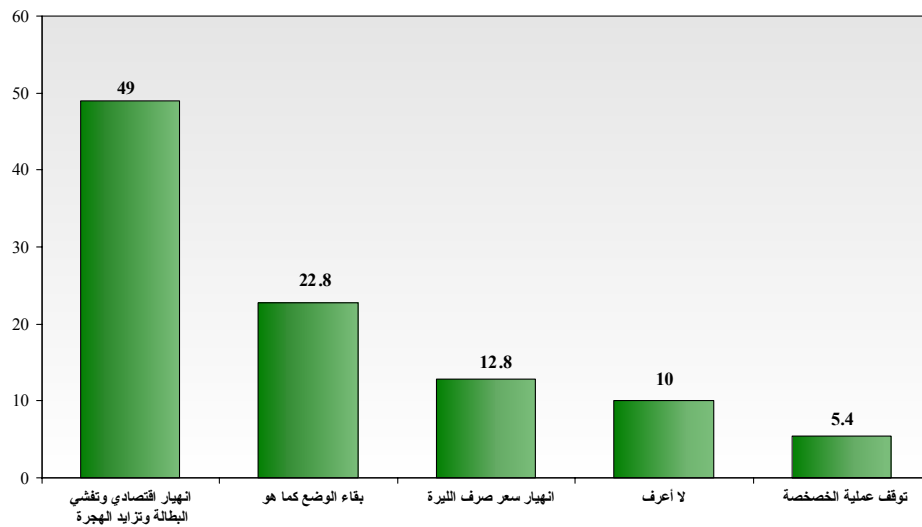
(%49)

%22.8 (2)

%5.4

%12.8

." (4) " %10



600 :

Information International S.A.L

الدولية للمعلومات ش.م.ل.د.

:

	%31	(%61.2)			-
			%33.2		
	(%64.3)	(%65.6)	(%65.9)		-
			%42.4		
	(%59.4)				. (%54.3)
%35.2		(2)			-
		%35.8	%28.5	(2)	
			(2)		
		%22.8	%26.4		-
			(2)		

	%52.8		600		
	22-18		%26		%47.2
	44-35	%11.5	34-29	%17.8	28-23
					%38.2
%38			45		%6.5
	1500-1000	%24.4	1000-500		
	%2.2	500-200	%12.4	2000-1500	%16.7
. %1.9 ±			2000	%6.3	200