



INFORMATION
international SAL

RESEARCH CONSULTANTS

Opinion Poll on Government Performance After 300 Days

September 2001

Sample Description

Sample Description (1/3)

- The poll covered all Lebanese territory, with 1250 questionnaires proportionally distributed in the six Lebanese Provinces (Mohafazat).
- In terms of gender, the questionnaire was distributed as follows: 70.6 % for males compared to 29.4% for females.
- The respondents covered all age groups. Of the sample, 14.3% were aged 18 to 24, compared to 23.4% aged 25 to 34, 31.1% aged 35 to 44, 19.6% aged 45 to 54 and 11.6% over 55 years old.

Sample Description (2/3)

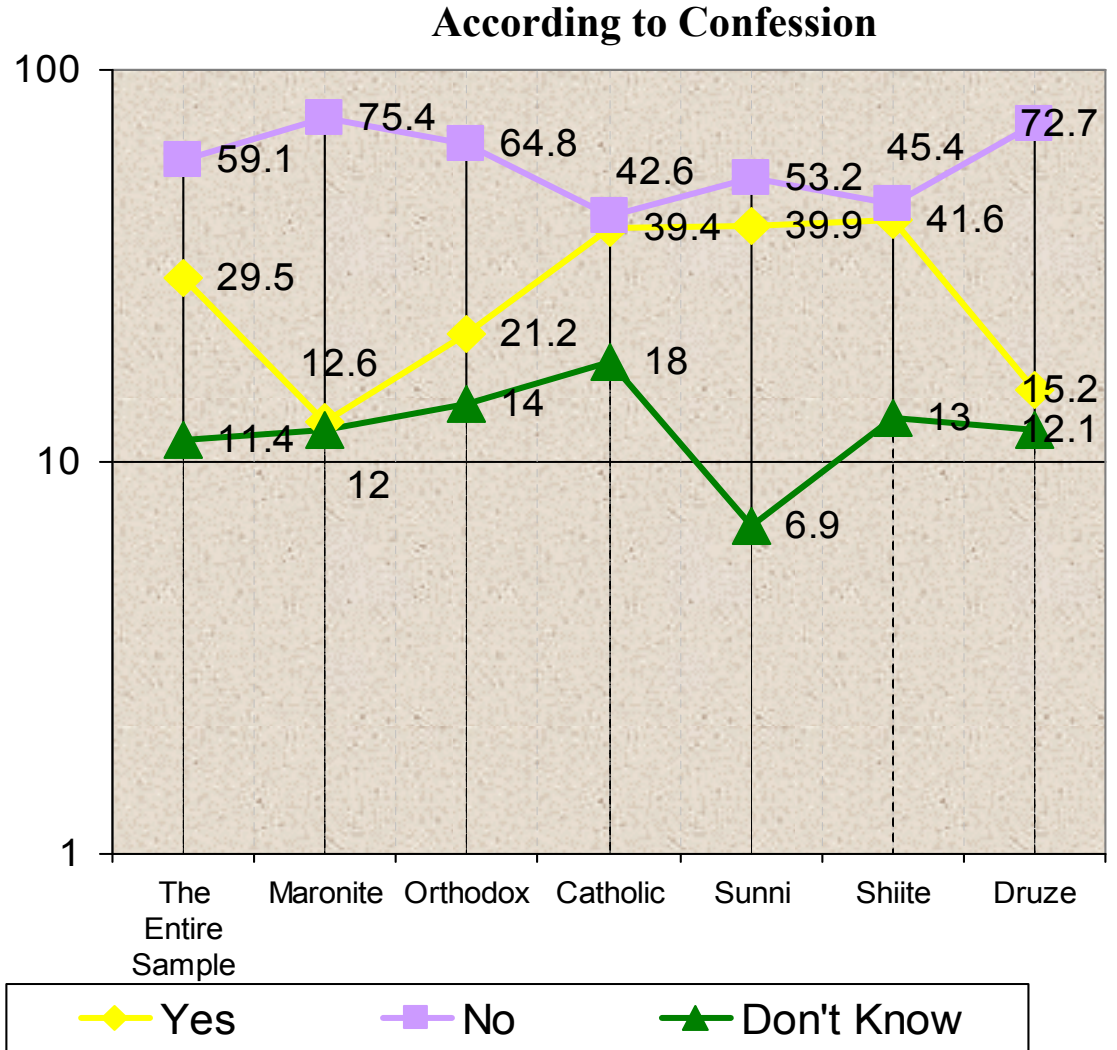
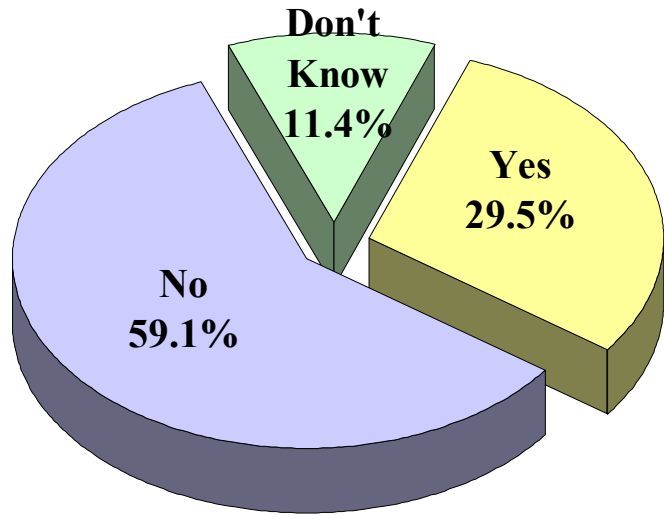
- In terms of income, the majority of respondents (37.8%) earn an average of US\$500-US\$1,000 per month, compared to 40.3% who earn US\$200-US\$500, 9.6% between US\$1,000 and US\$1,500, and 2.7% between US\$1,500 and US\$2,000. Only 7% of those polled have a monthly income of less than US\$250, while 2.5% have earnings exceeding US\$2,000.
- As for the social standing, the survey reveals that the majority (62.7%) are qualified, compared to 31.9% unqualified, 3.6% widowed and 1.8% divorced.

Sample Description (3/3)

- The questionnaire was distributed to all professional sectors of high qualification, such as doctors and university professors etc; median professions, such as bureaucrats; as well as employees of service sectors and merchants. It also covered farmers, professional and unprofessional laborers, military personnel, vehicle operators and drivers.
- It is worth noting that results of the Nabatiyeh Province (Mohafazat) were merged with those of South Lebanon. Also, the six main confessions were adopted as a gauge for comparison where applicable.

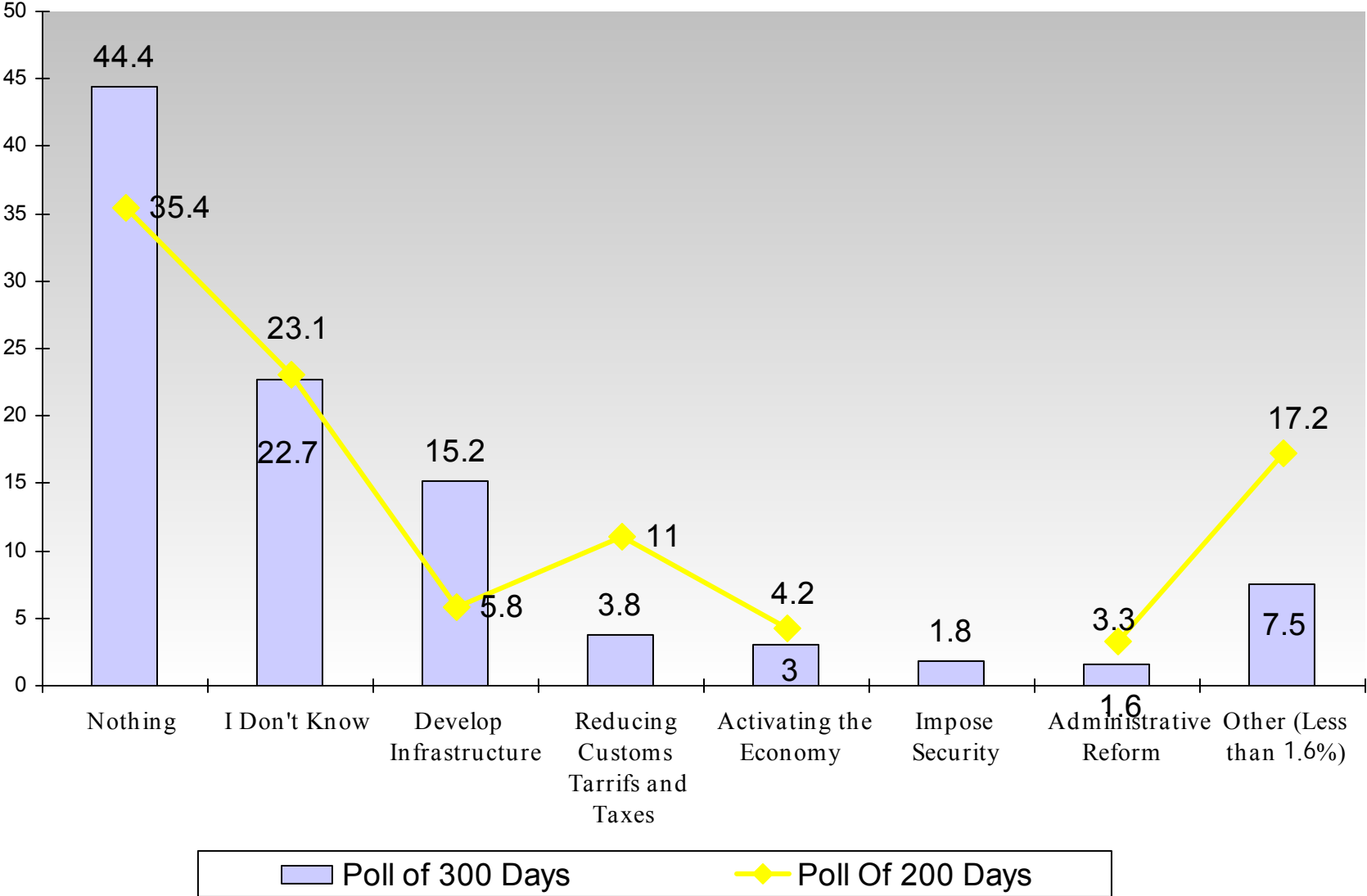
Results

Do you Think the Government is Able to Carry out its Mission? (%)

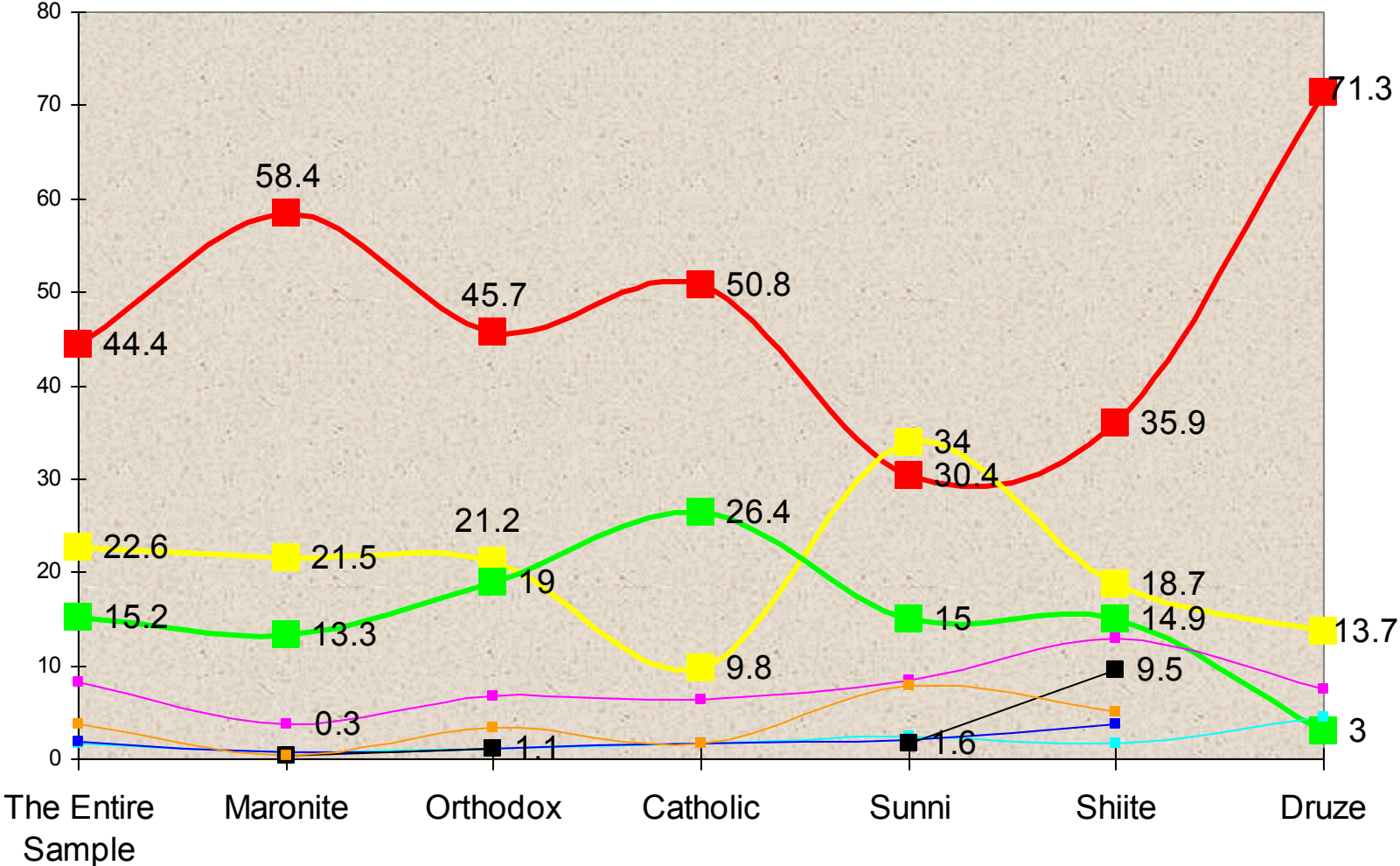


In Your Opinion, What is the Government's Most Important Achievement Until Now? (%)

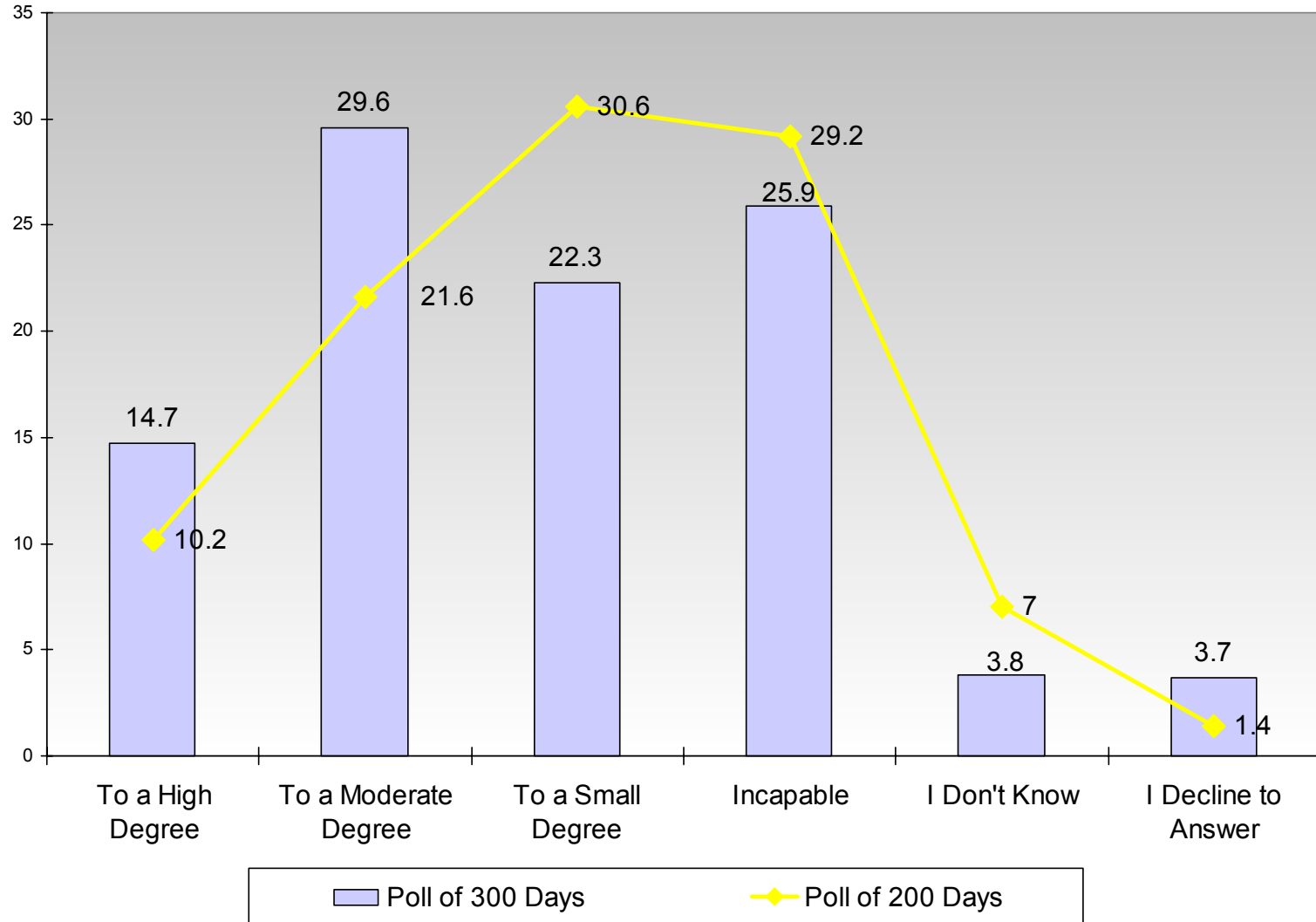
Open Ended Question



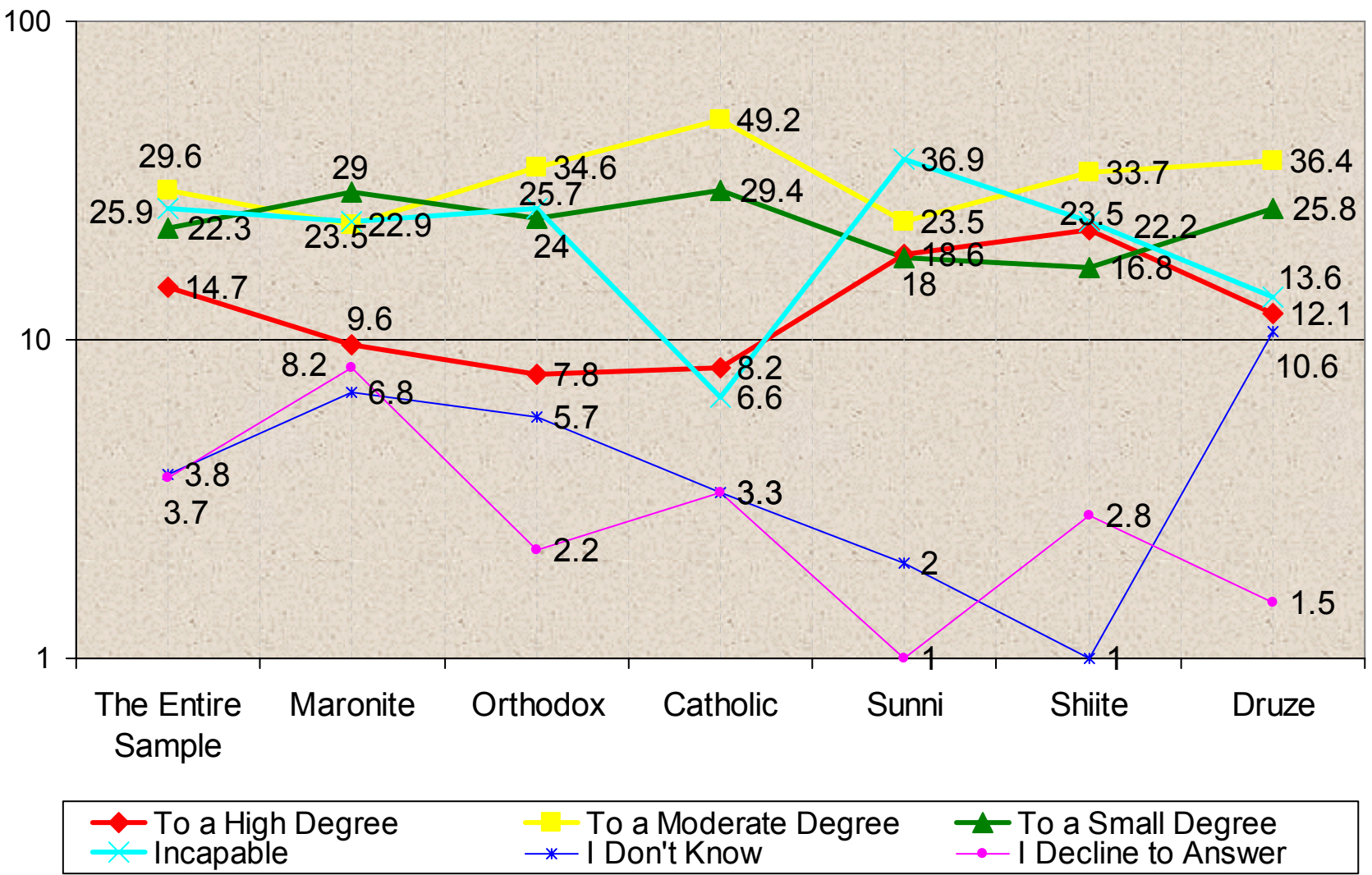
In Your Opinion, What is the Government's Most Important Achievement Until Now? According to Confession (%)



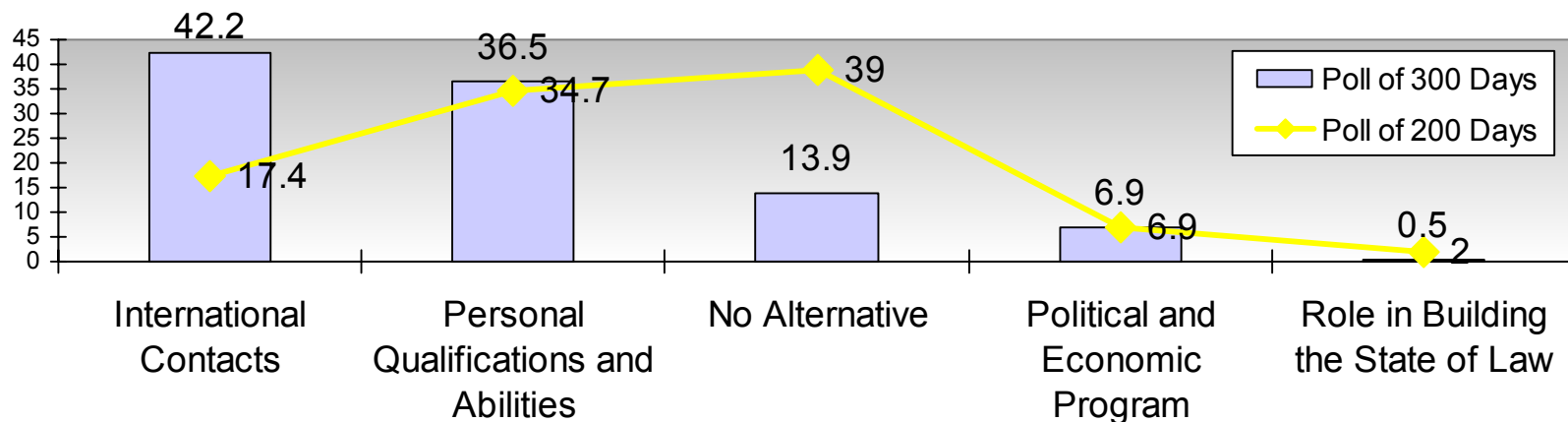
To What Degree do you Think the Prime Minister has Succeeded in his Post since he Assumed Office and Until Now? (%)



To What Degree do you Think the Prime Minister has Succeeded in his Post since he Assumed Office and Until Now? According to Confession (%)

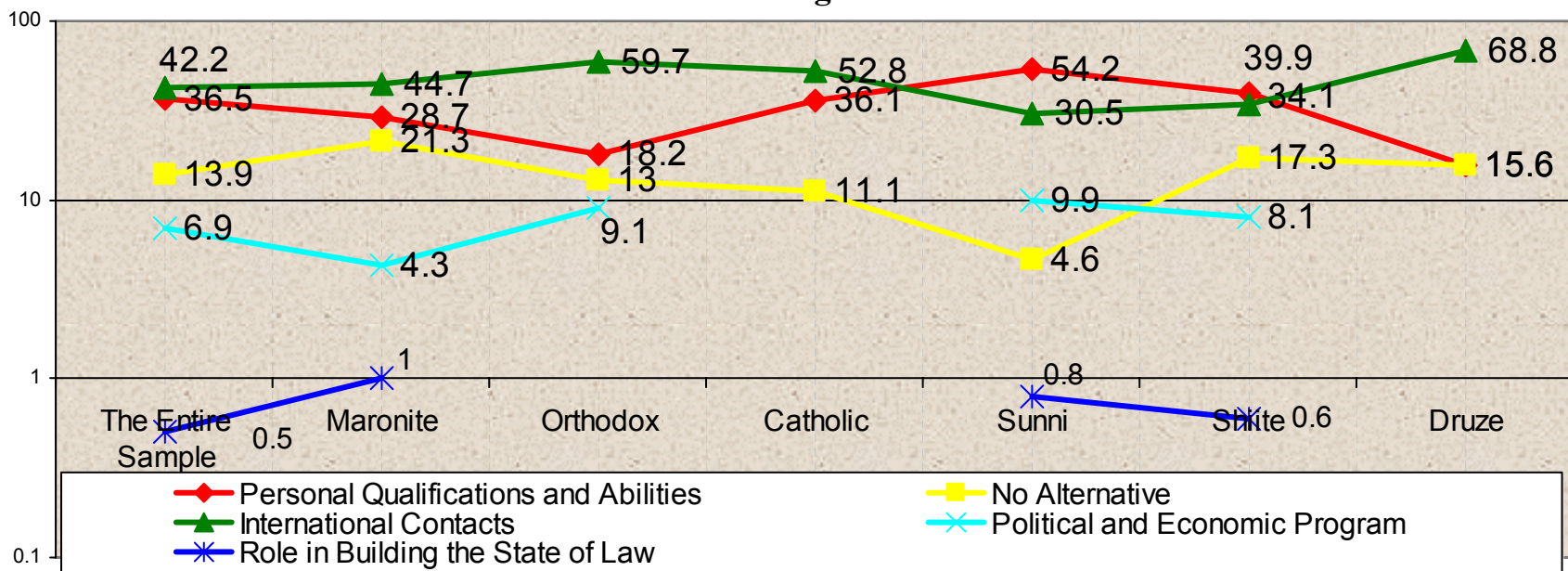


If You Answered that the Prime Minister Was Successful to a “High or , Moderate Degree” in his Post, Please Specify the Reason: (%)



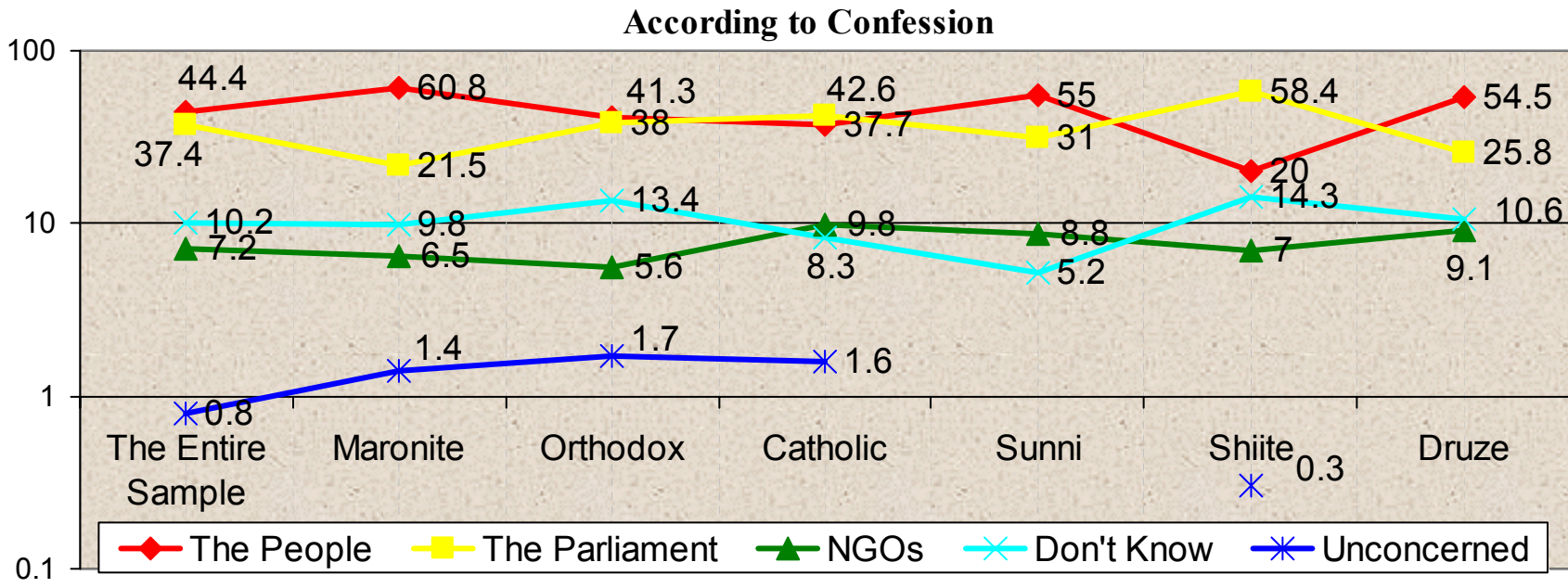
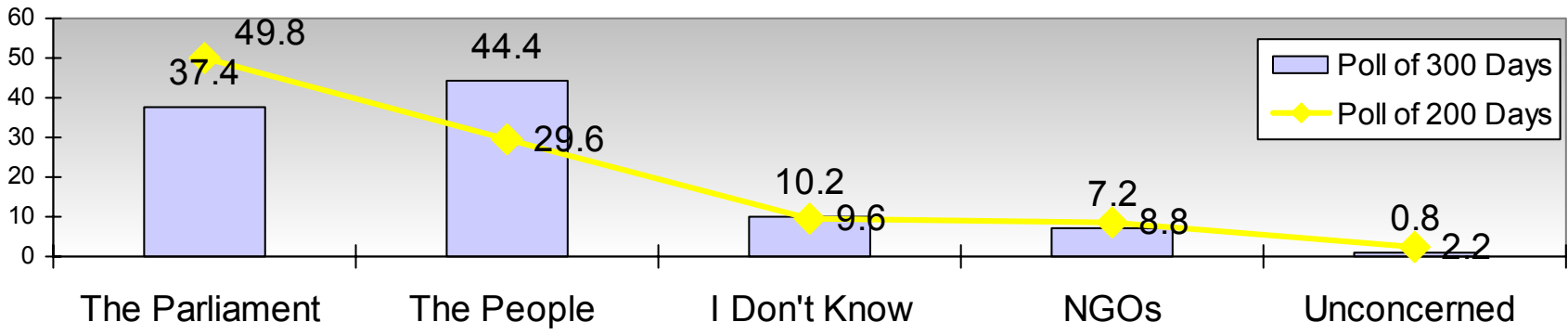
According to Confession

Base: 1250

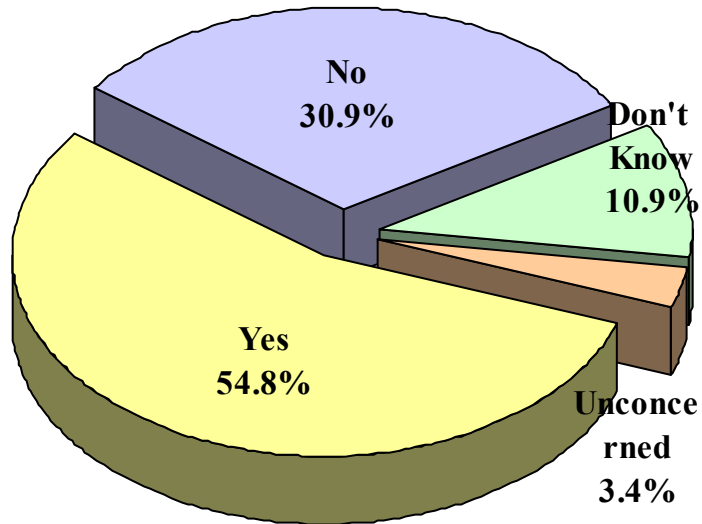


Base: 554

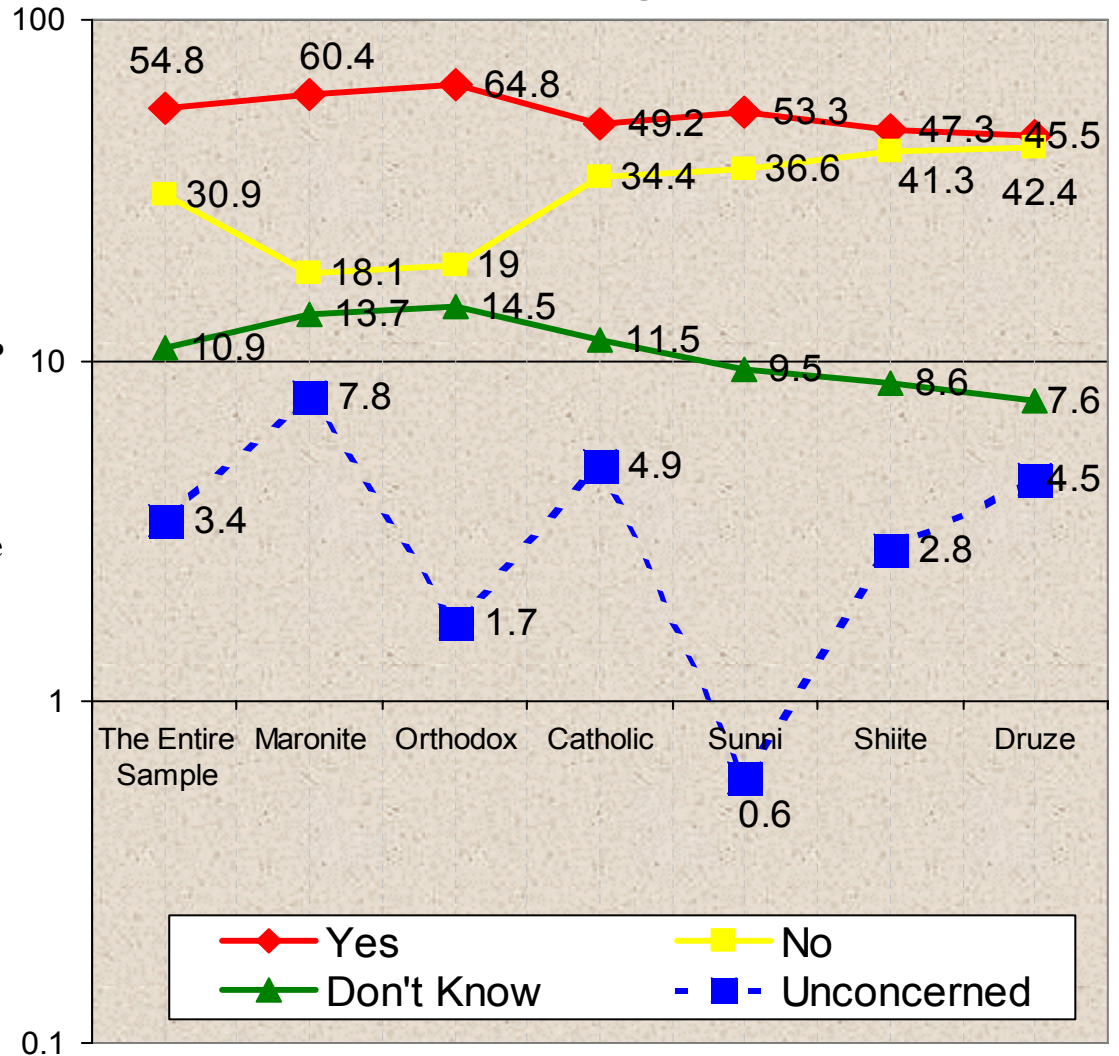
In Your Opinion, How Should The Government Be Judged? Through: (%)



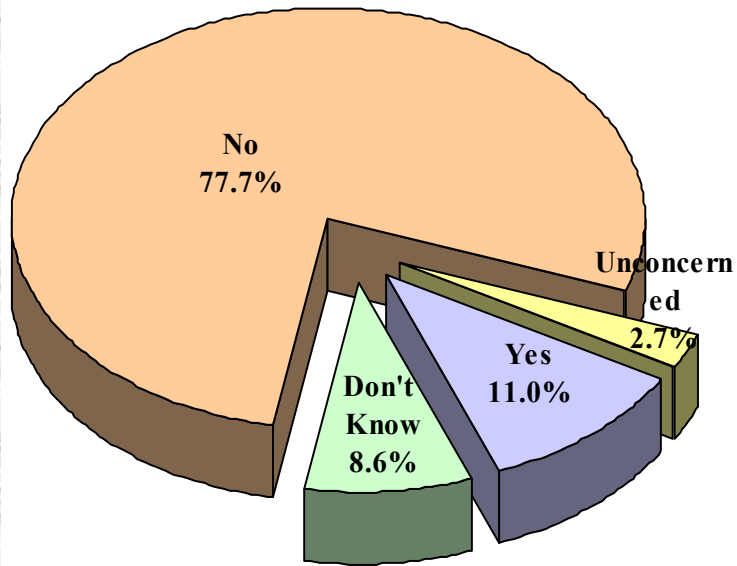
Do You Agree On The Alteration Of The Government? (%)



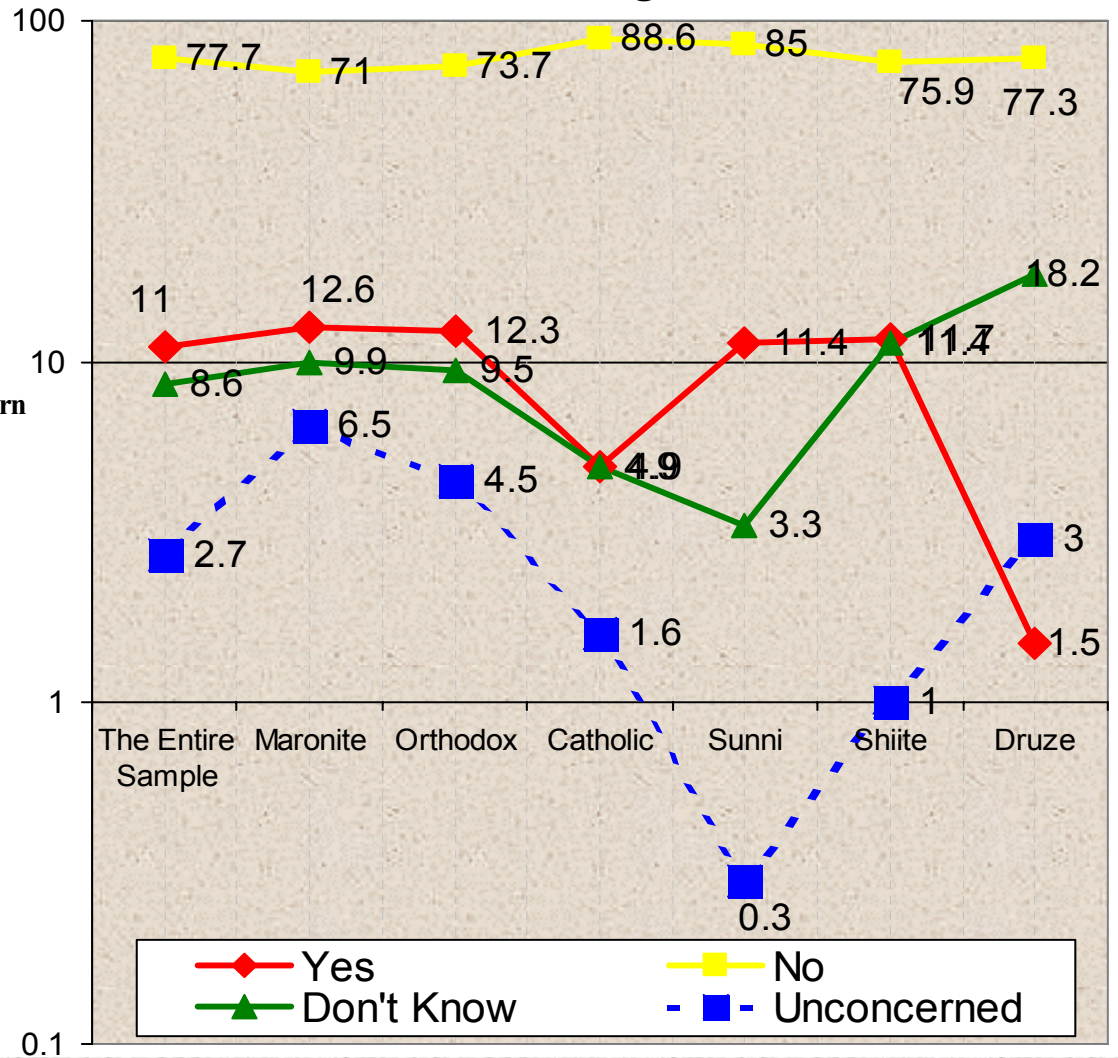
According to Confession



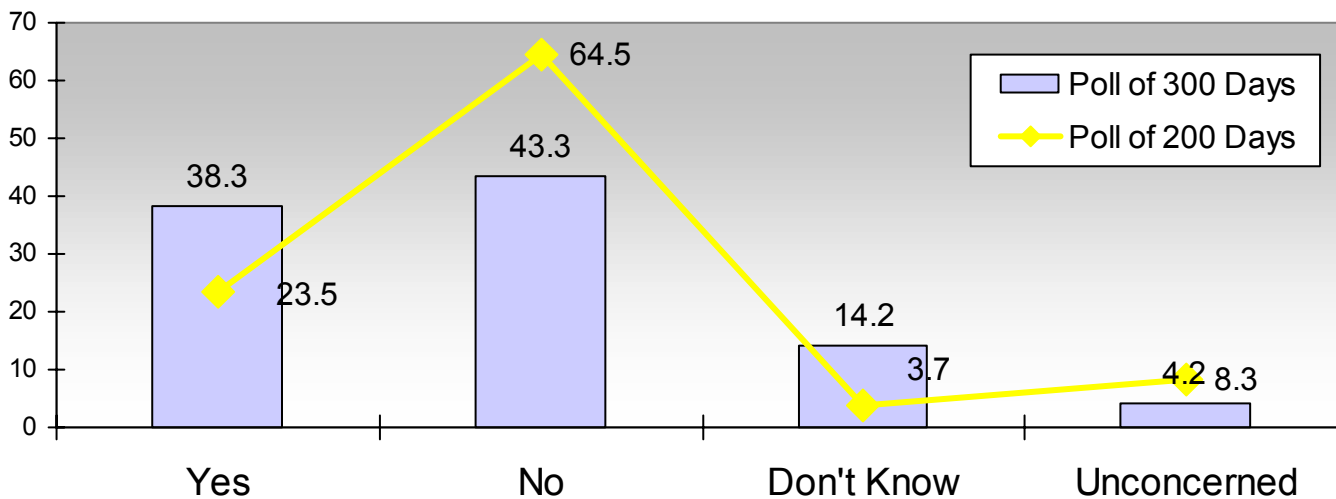
Do You Agree On The Establishment of a Military Government? (%)



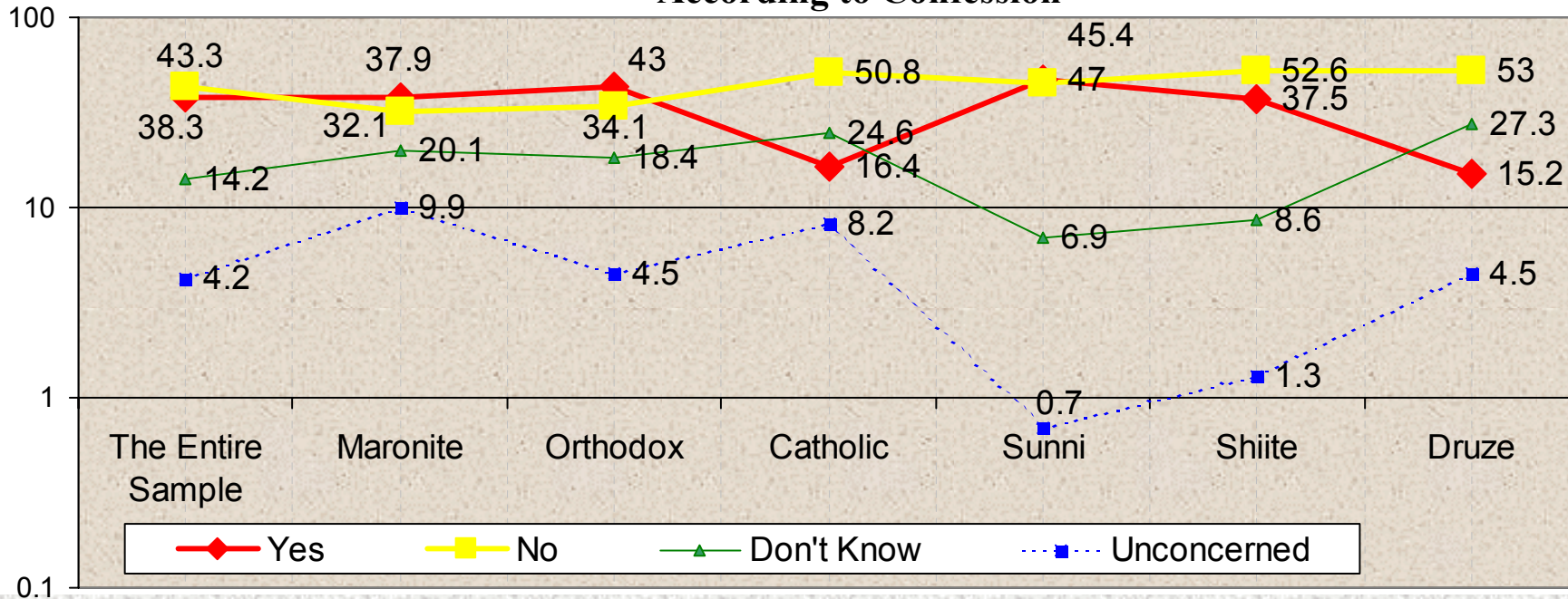
According to Confession



Do You Agree On The Alteration Of The Prime Minister? (%)

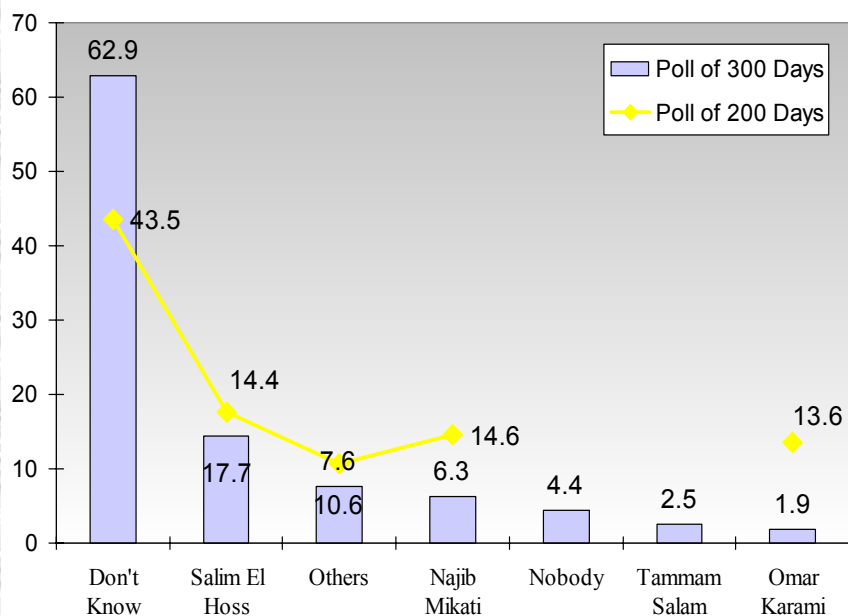


According to Confession

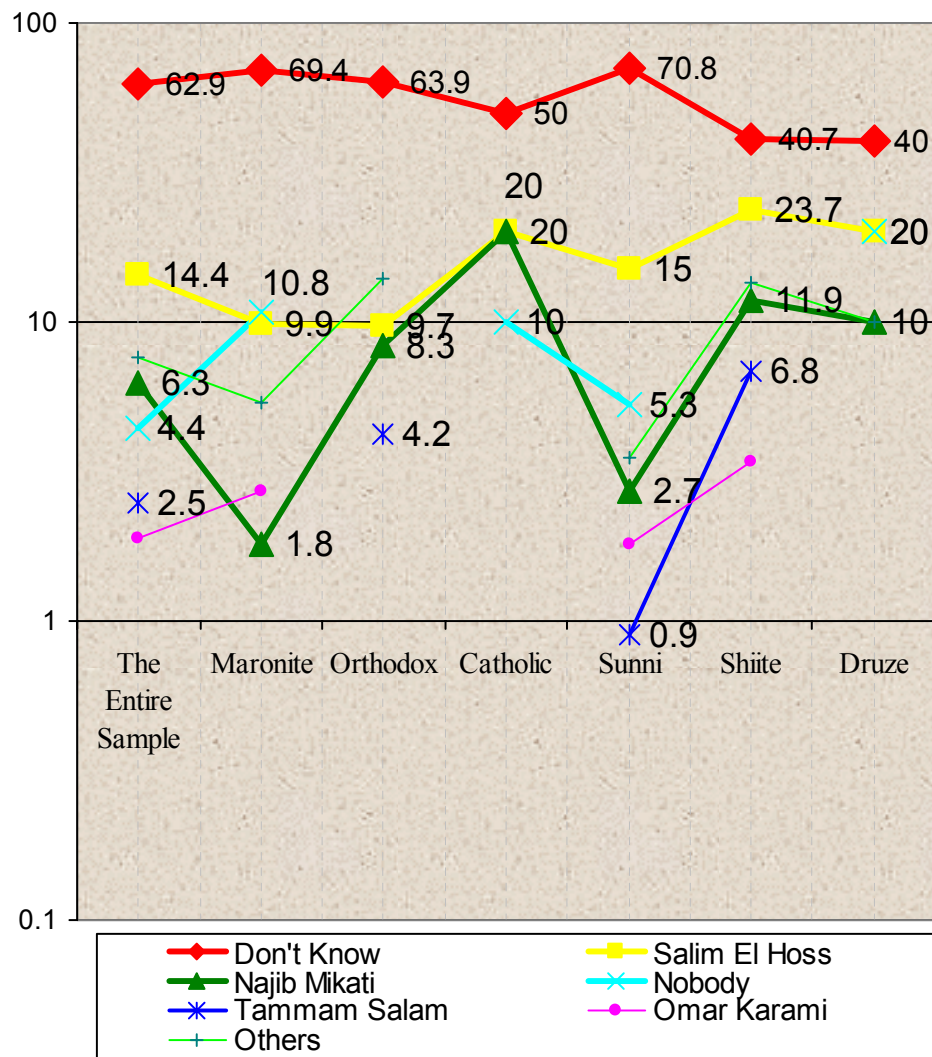


If You Agree On The Alteration Of The Prime Minister, Whom Do You Choose? (%)

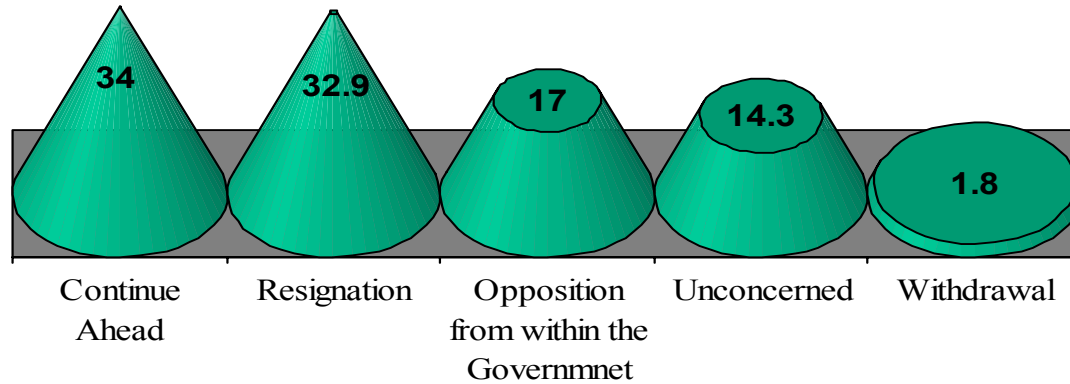
If Yes, Whom Do You Choose? (%)



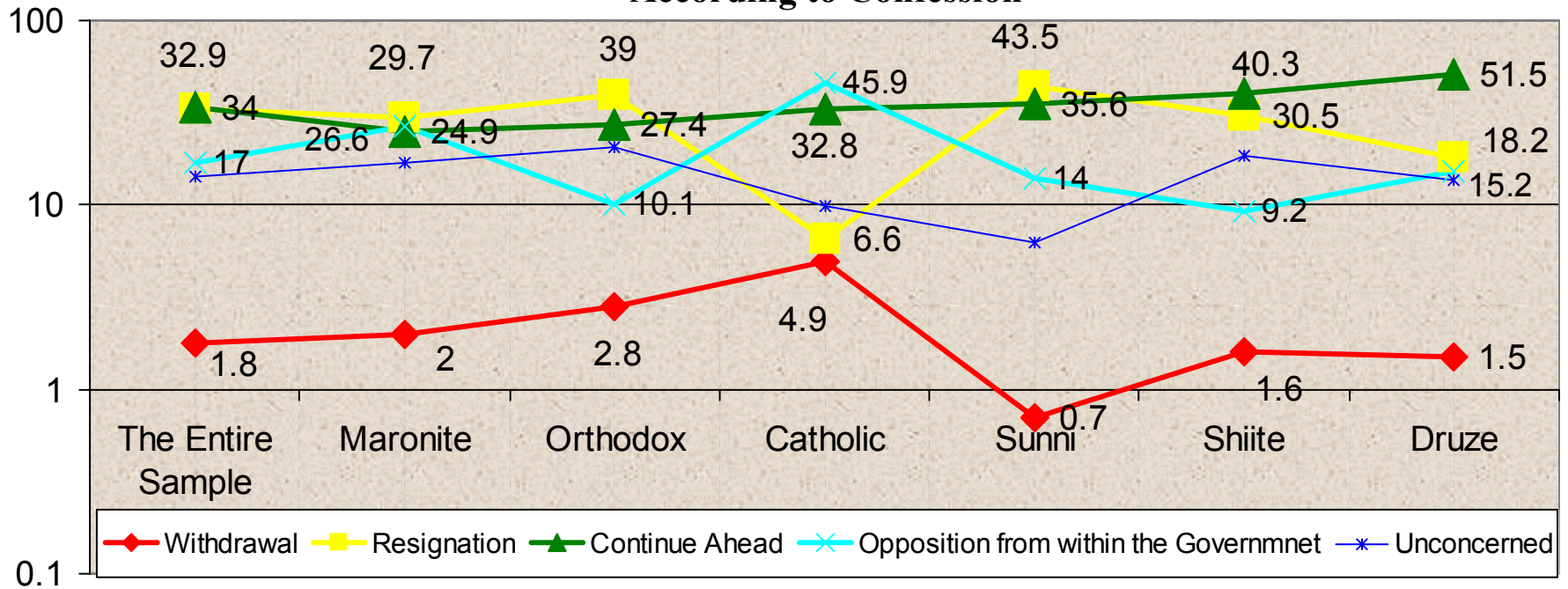
According to Confession



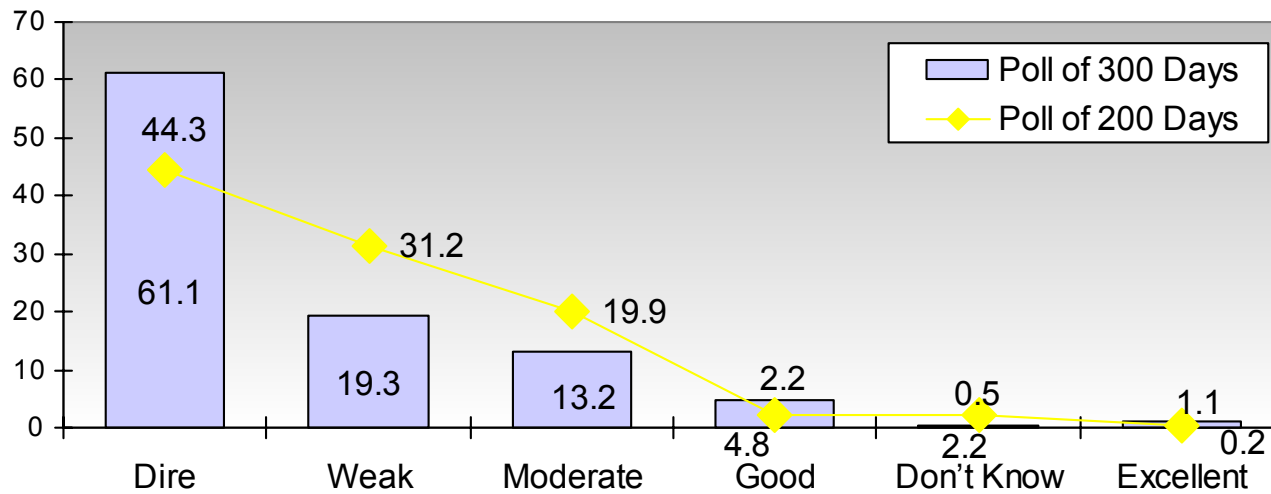
Do you Support Prime Minister Hariri in any of the Following Choices? (%)



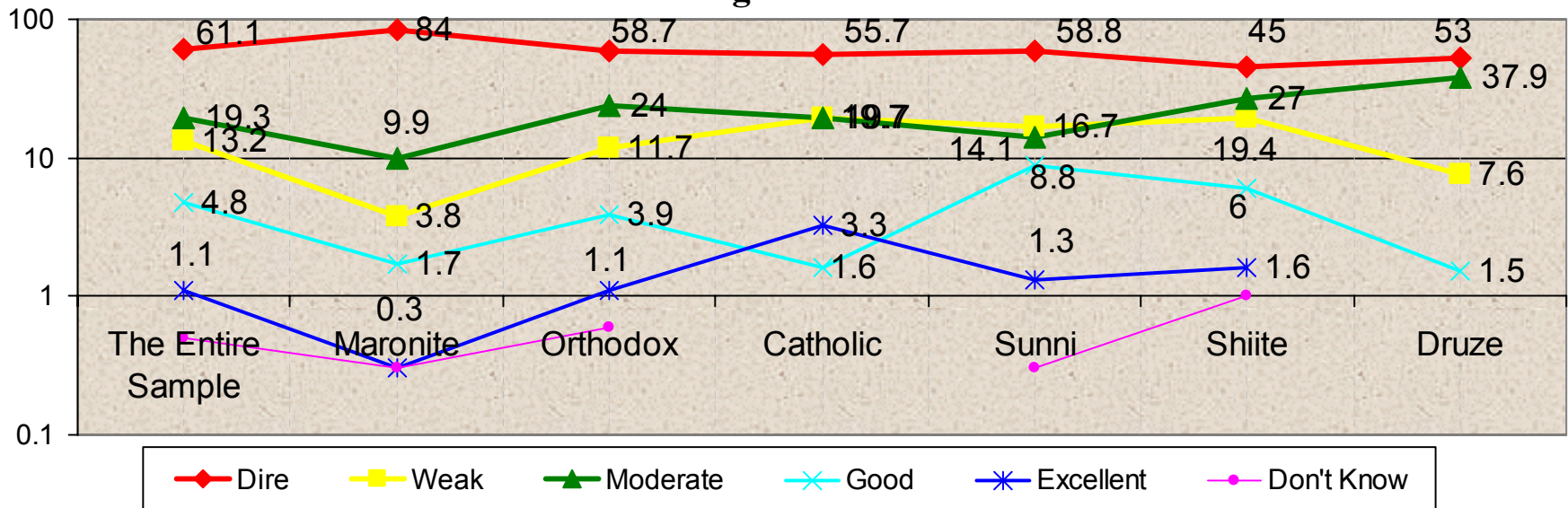
According to Confession



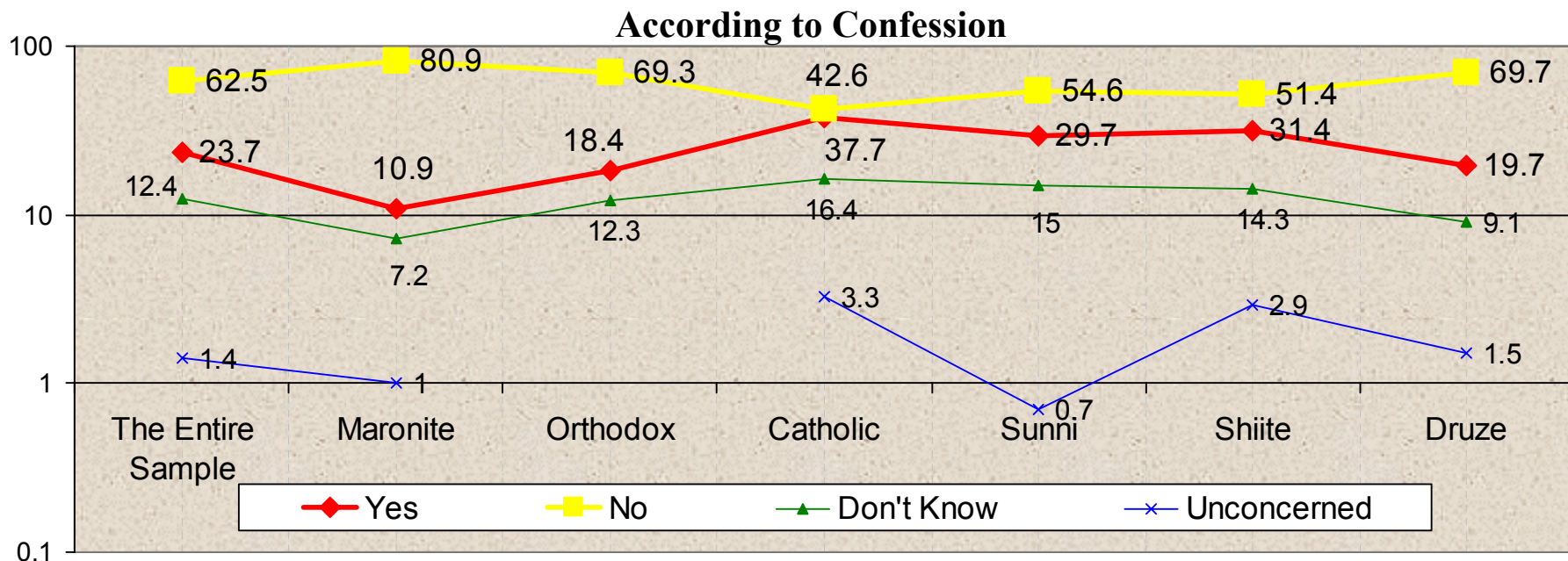
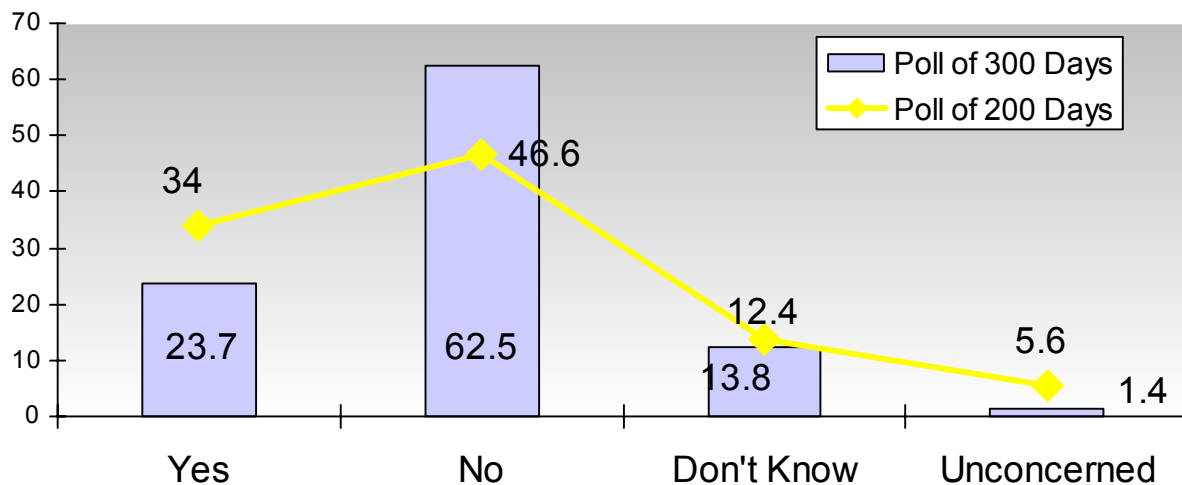
How do you Describe the Economic Situation in Lebanon? (%)



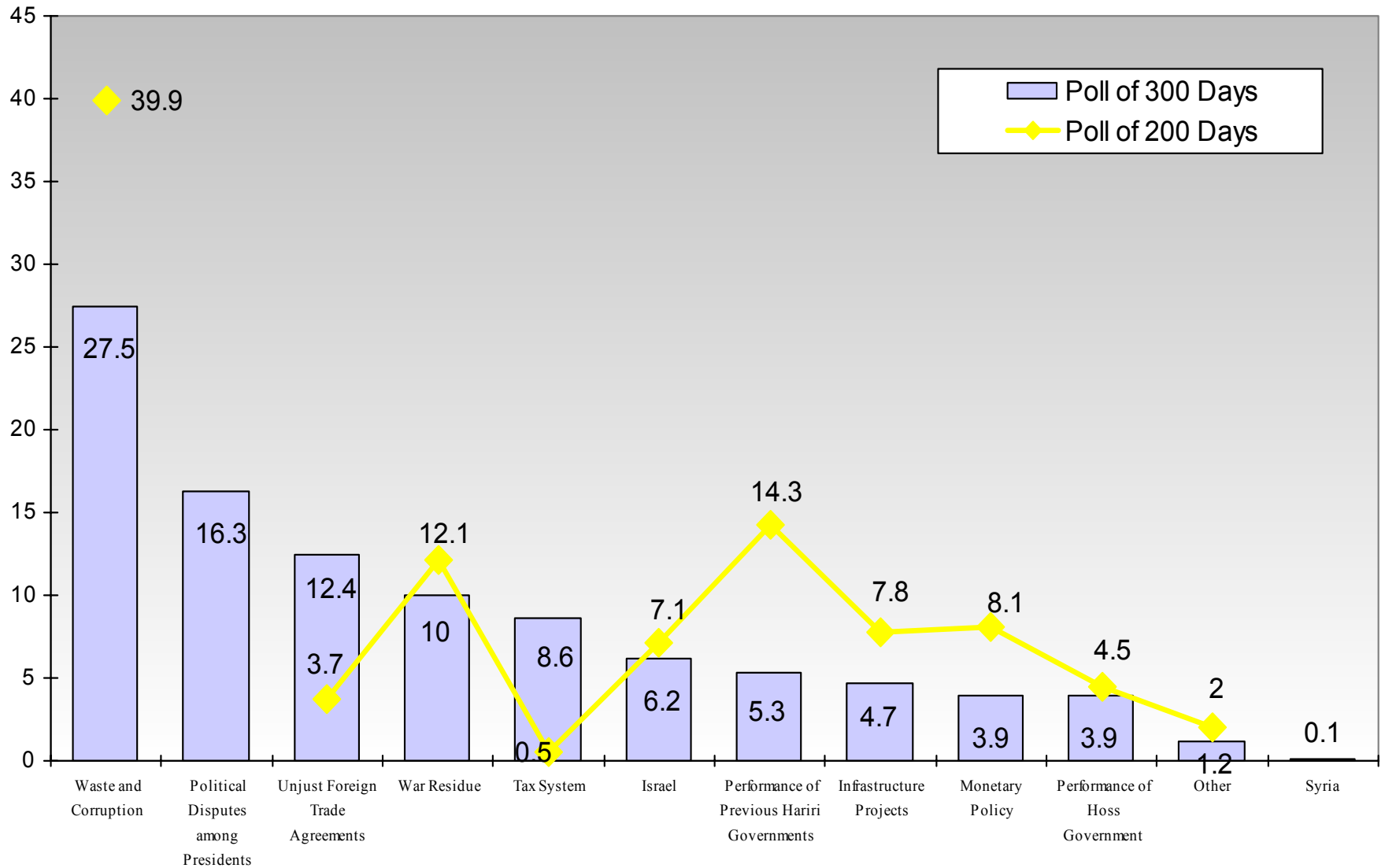
According to Confession



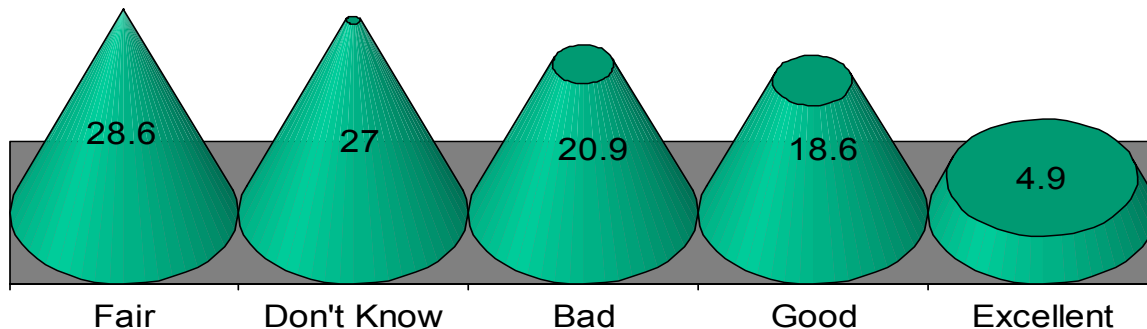
Do you Support the Government Policy for Tackling the Economic Crisis? (%)



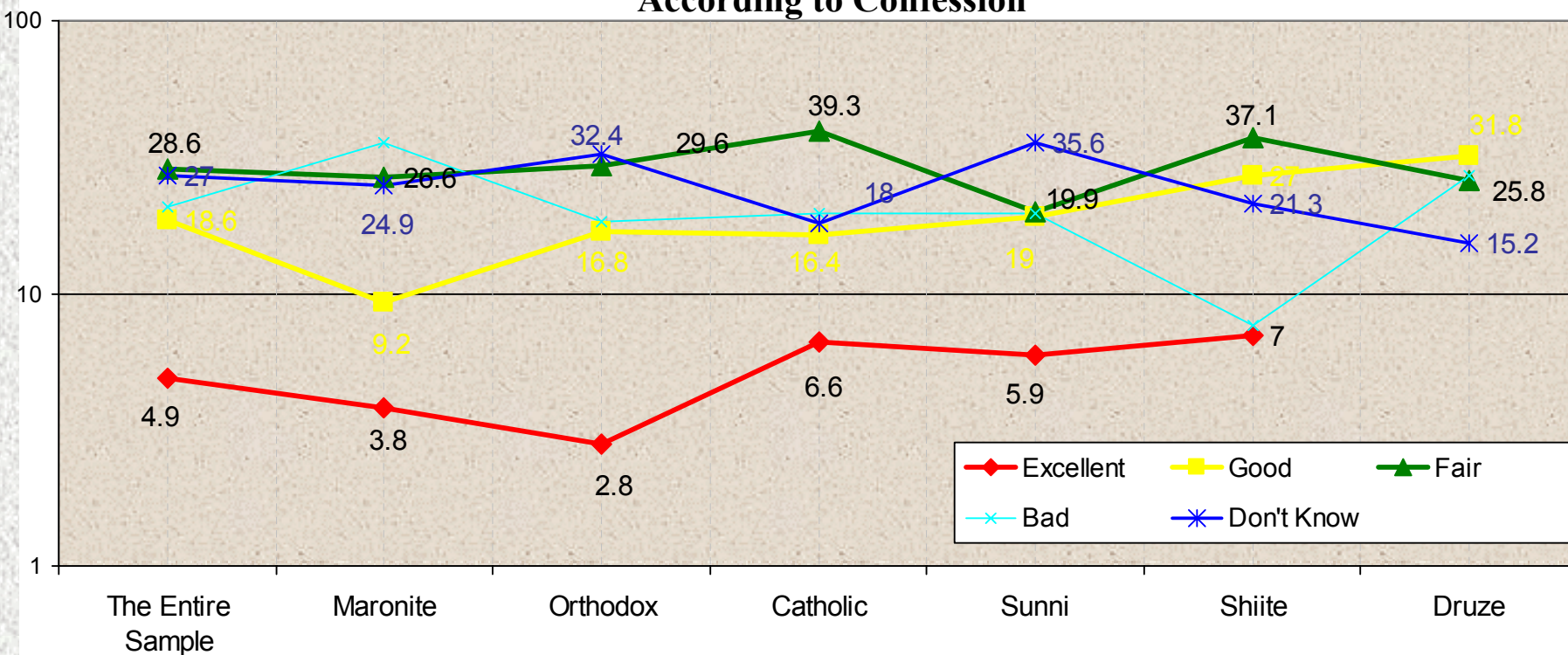
In your Opinion, What are the Main Causes for the Economic Crisis? (%)



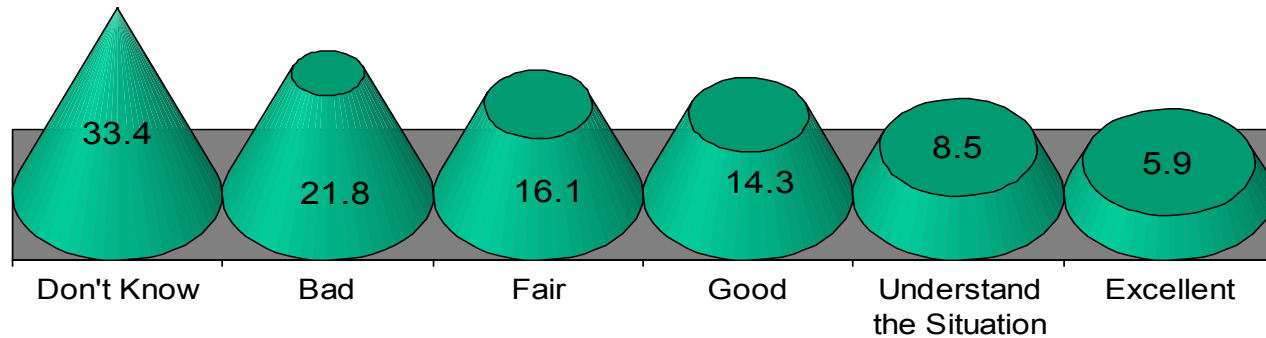
How Do You Describe the Relations Between the Presidents Lahoud and Hariri? (%)



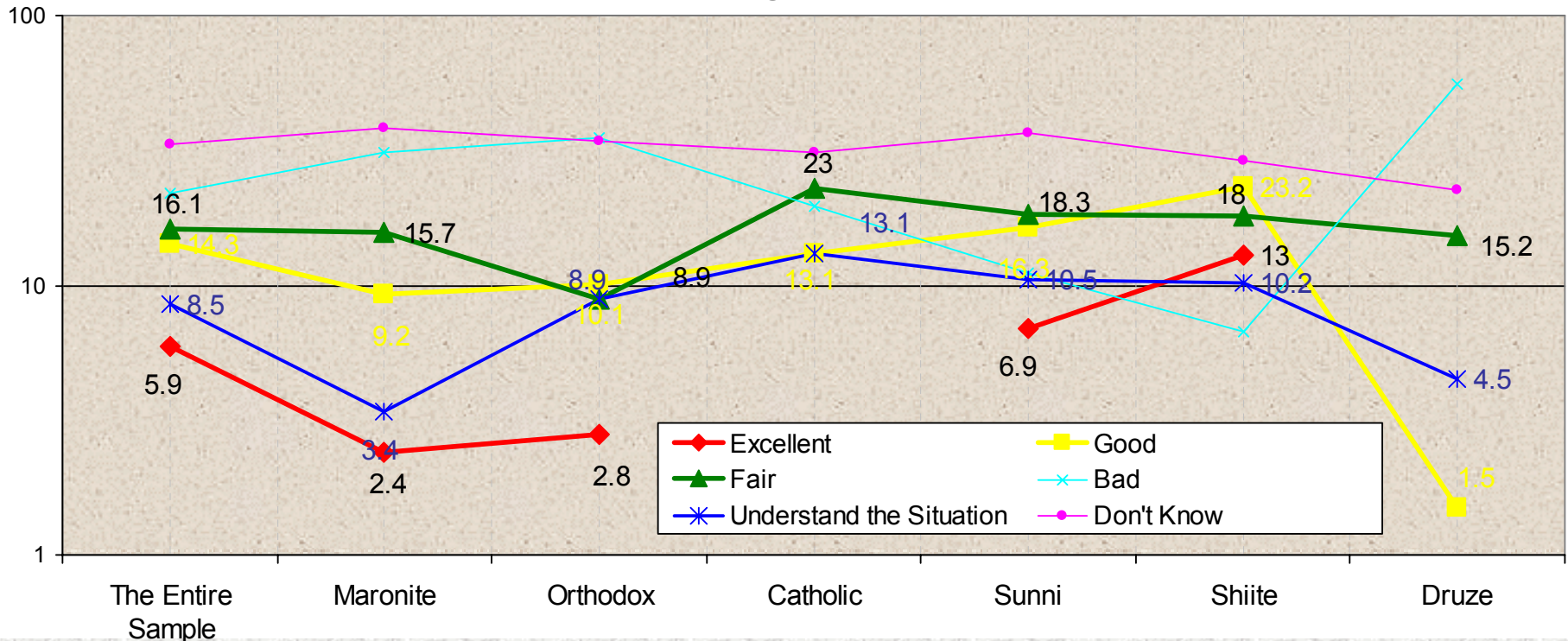
According to Confession



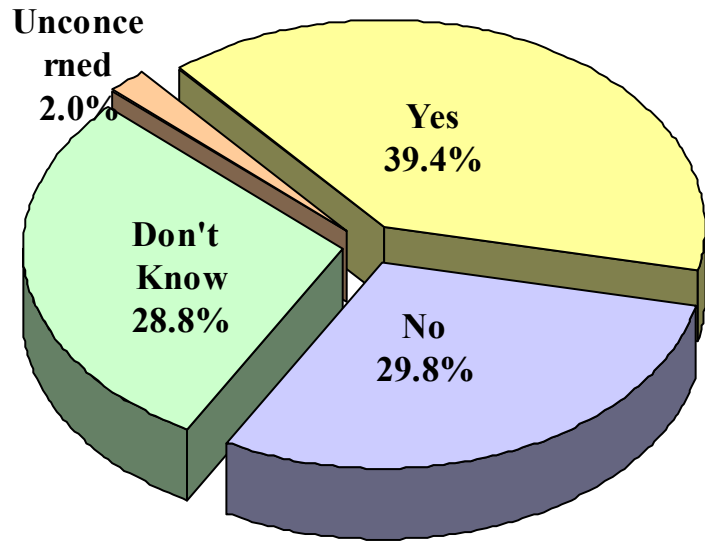
How Do You Describe the Government's Position Regarding Issuing the Law of Judicial Measures? (%)



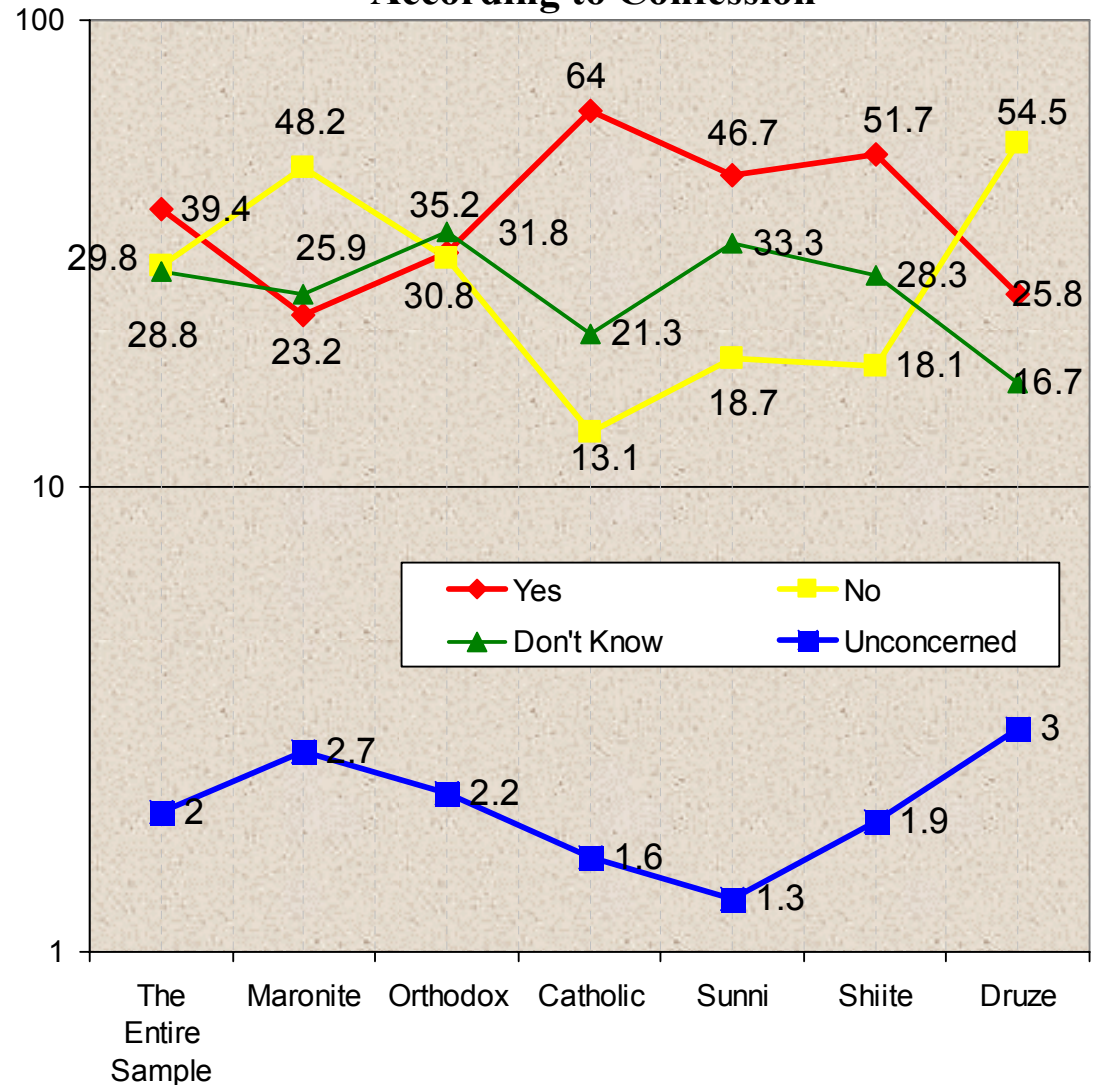
According to Confession



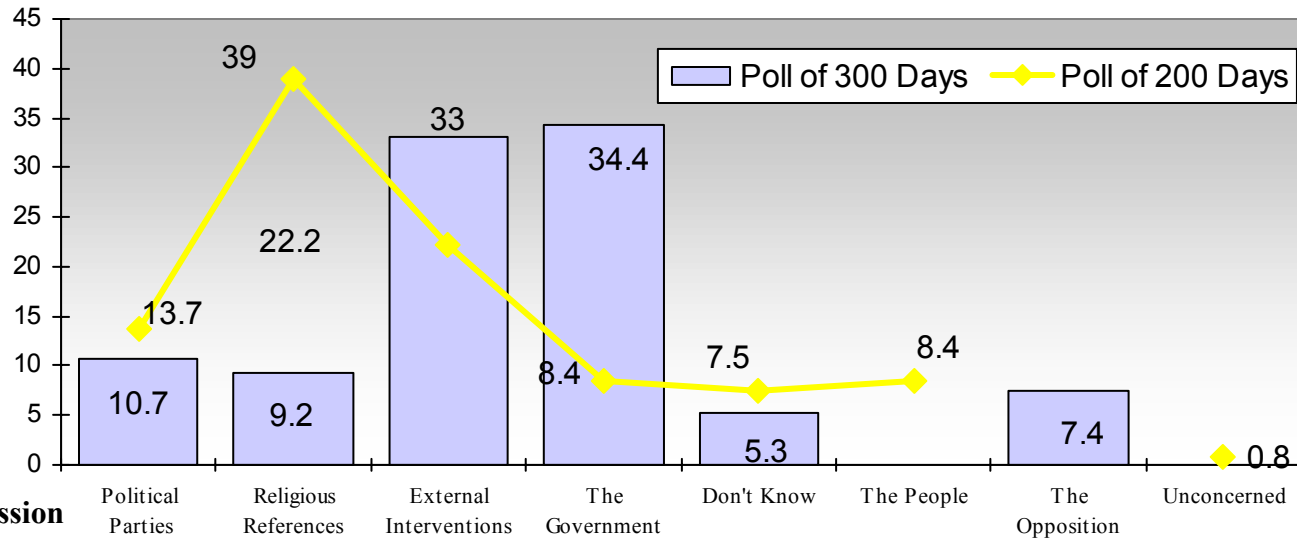
Do You Think President Lahoud is Capable of Managing Internal Dialog? (%)



According to Confession



In Your Opinion, Who Is The Responsible For The Recent Vocal Confessional Prejudices And Feuds ? (%)



According to Confession

